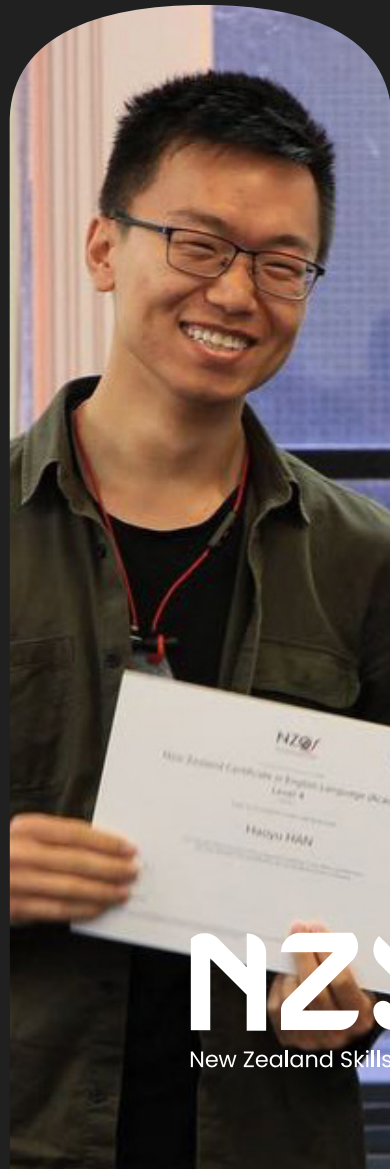
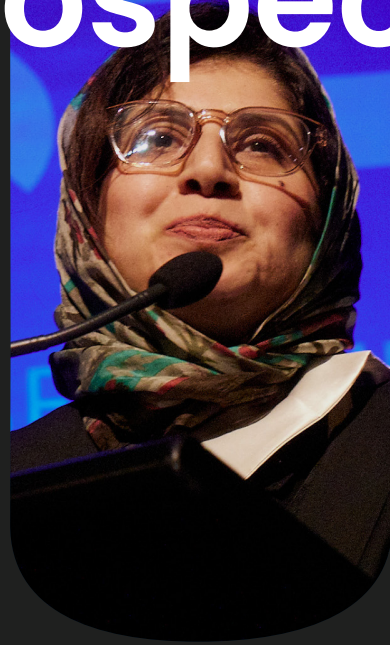


New Zealand Skills and Education Group

International Prospectus



NZSEG
New Zealand Skills and Education Group

Transforming lives through the power of learning

WELCOME



Nau mai, haere mai

Welcome to the New Zealand Skills and Education Group (NZSEG), a trusted leader in education and training for over two decades. NZSEG is a diverse group of four specialised institutions: *New Zealand Skills and Education College*, *Seafield School of English*, and *Edvance Workplace Education*. Together, we offer a wide range of programmes tailored to both domestic and international learners.

At NZSEG, we are proud of our history of producing thousands of graduates who leave our institutions with more than just a qualification. Our students gain real-world skills, invaluable experiences, and the confidence to excel in their chosen careers.

As we celebrate 20 years of educational excellence, we reflect on the countless lives transformed through our programmes. For two decades, NZSEG has empowered students to thrive – not only academically, but also in their professional and personal lives.

We believe education is an invaluable tool that inspires growth, opens doors, and provides meaningful value to both learners and the communities they serve.

Our commitment to delivering high-quality education and supporting students through their learning journey remains as strong as ever. We are excited to be a part of your journey in Aotearoa New Zealand and we look forward to seeing the remarkable impact you will make.

Thank you for choosing NZSEG as your educational partner.

Ngā mihi.

The NZSEG Team

Our Mission

To produce successful graduates through exciting educational experiences

New Zealand Skills and Education Group (NZSEG) delivers high-quality educational experiences that equip our learners with industry-focused professional development, customised skills training, and above all else, a chance to transform their future. NZSEG's programmes span technology, health, education, military prep, hospitality, English language, and more.

20+

20+ years serving the community

18+

18+ years of bespoke business training

40+

40+ years of excellence in English Teaching

Our Achievements

500+

More than 500 industry partners

20K+

20,000 graduates and counting...

95.1%

Average completion rate

93.95%

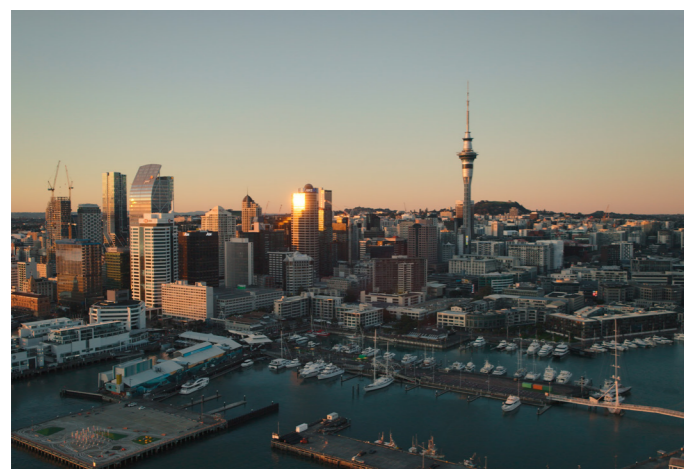
Satisfaction rate: January 1st to December 31st 2023

Table of Contents

Discover New Zealand	6
Study English at Seafield	8
General English	10
IELTS Preparation	10
NZ Certificate in English Language Level 3 (Applied)	11
NZ Certificate in English Language Level 4 (Academic)	12
NZ Certificate in English Language Level 5 (Academic)	13
Foundation Studies at NZSE	14
NZ Certificate in Foundation Skills Level 3	16
NZ Certificate in Foundation Skills Level 3 (Engineering)	18
NZ Certificate in Foundation Skills Level 4	20
Study Tech at NZSE	22
NZ Diploma in IT Technical Support Level 5	24
NZ Diploma in Engineering Level 6 (Electronics)	26
Diploma in Applied Network and Cloud Technology Level 7	28
Bachelor of Business Information Management Level 7	30
Study Health at NZSE	32
NZ Certificate in Health & Wellbeing Level 4	34
Diploma in Community Healthcare & Support Level 7	36
Study Education at NZSE	38
NZ Diploma in Early Childhood Education & Care Level 5	40
Micro-credentials & Upcoming Courses	42
NZSEG Pathways	44
Student & Career Support	46
How to Apply	48

Discover New Zealand

If you like the idea of studying in a one-of-a-kind country that has some of the most breathtaking scenery in the world, as well as an easy-going culture with an array of outdoor activities available, then Aotearoa New Zealand could be the place for you.



New Zealand's size means its diverse landscapes and tourist attractions are never more than a day's travel away. From pristine black sand beaches to crystal-clear lakes; lush rainforests to snow-capped mountains, you can explore the stunning natural landscape by land, sea, or air.

NZSEG's campuses are based across Auckland and Hamilton, two cities in the North Island. Auckland consistently rates as one of the world's most livable cities – offering a top-notch quality of life amidst a cosmopolitan hub of activity and sightseeing opportunities. At the centre of one of the richest

agricultural and pastoral areas in the world, Hamilton is nestled on the banks of the mighty Waikato River and is known for its award-winning gardens and eateries.

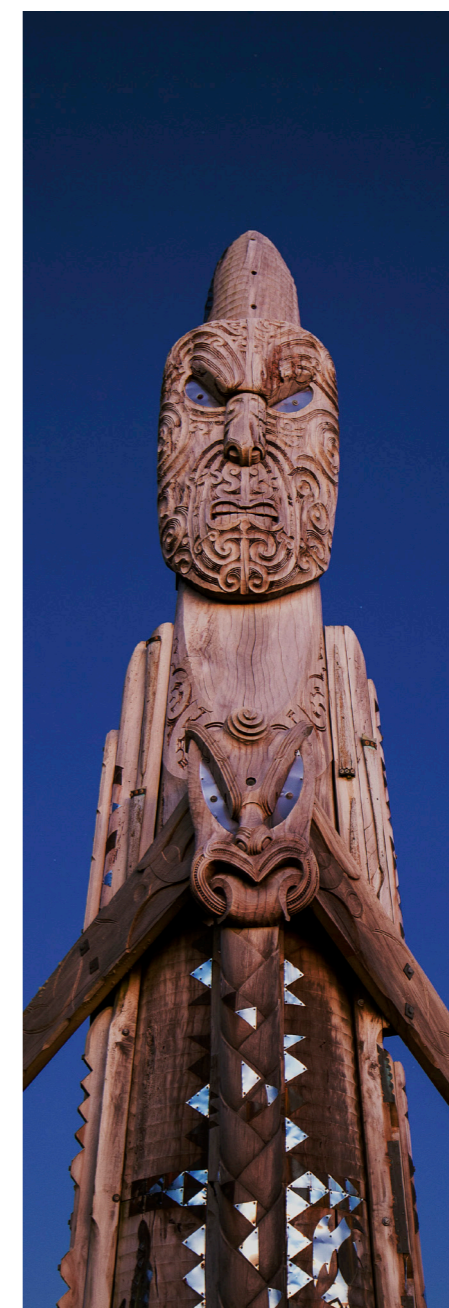
New Zealand is one of the safest places to live in the world, ranked fourth against 144 other countries. You'll be joined by friendly people in a diverse, multicultural environment that celebrates inclusivity and welcomes people from all corners of the globe. With a vibrant mix of cultures and traditions, New Zealand offers international students a truly enriching experience both academically and personally.

Treaty of Waitangi – Te Tiriti o Waitangi

Te Tiriti o Waitangi is an important partnership agreement signed on 6 February 1840 by representatives of the British Crown and 540 Māori rangatira (chiefs) for the purpose of enabling the British settlers and Māori (tangata whenua or indigenous people of the land) to live together in Aotearoa New Zealand under a common set of laws or agreements.

Due to the differences in Māori and English translations of the Treaty, we must honour the spirit, intention, and core principles of the Treaty. NZSEG is committed to the rights and obligations articulated in the Treaty – to protect Māori rights and taonga (treasured possessions). Our international students need to understand the importance of respecting the spirit of the Treaty.

Please visit nzhistory.govt.nz to learn more.





Study English at Seafield

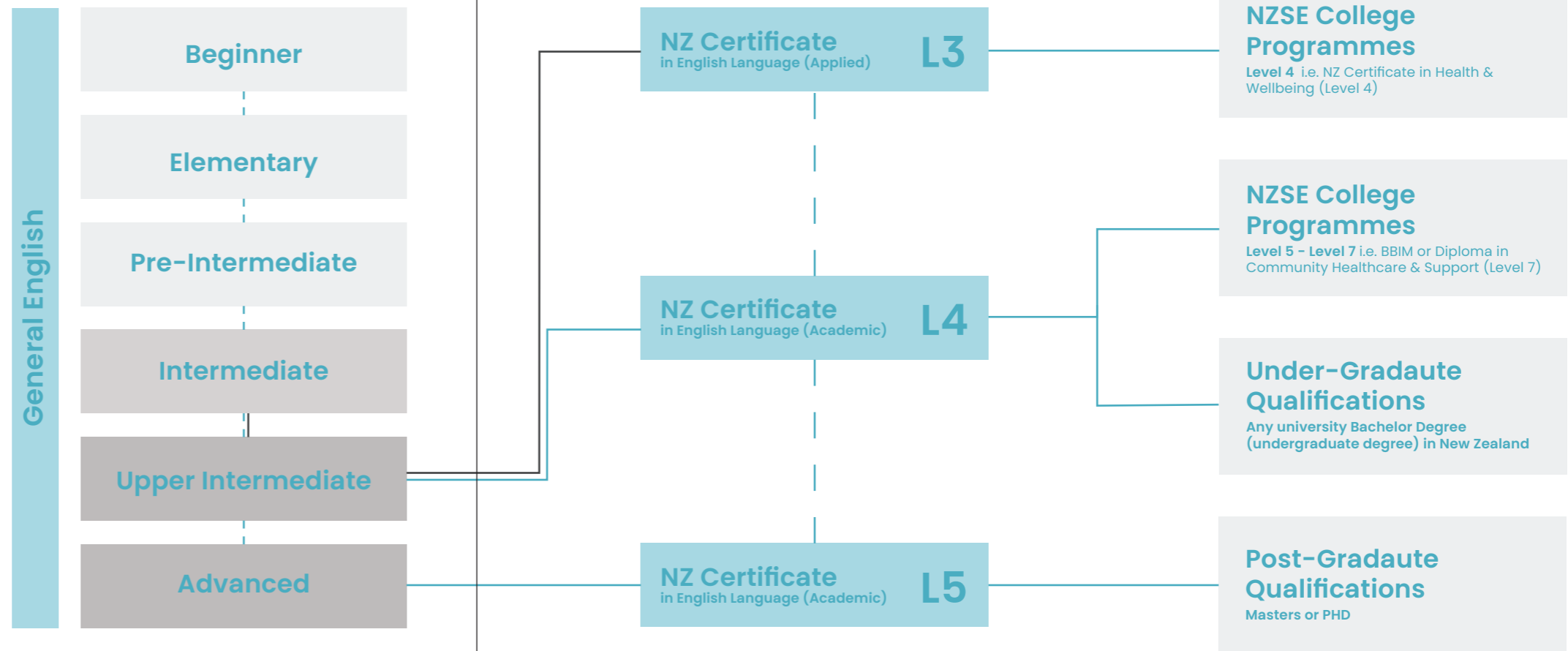
Located in the heart of the vibrant and bustling Auckland city, Seafield offers a variety of English courses for all skill levels. Seafield's expert team of tutors are committed to helping you improve your English language ability while also ensuring that you learn about Aotearoa New Zealand and its culture.

The campus is only a few minutes from the Viaduct Harbour, the Sky Tower, world-class shopping, and beautifully landscaped urban parks. At Seafield, you won't be short of activities to choose from – our social club organises hikes, restaurant outings, museum trips, and more!

Upon completing your studies, you will be well-prepared for job roles that require essential English language skills. You'll be able to advance in specialised English-speaking programmes and open up new, exciting career opportunities. Alternatively, you can choose to continue your studies, further enhancing your English proficiency and achieving higher levels of competency, setting you up for success in both professional and academic pursuits.

Our Mission
Excellence in English Language Teaching.

Further Study & Career Pathways



Highest Ranking by NZQA



Seafield School of English is approved by the New Zealand Qualification Authority (NZQA) as **Category 1 provider, which is the highest ranking given by NZQA** for showing their confidence in our education performance and our self-assessment processes.

A member of English New Zealand



Seafield School of English is a proud **member of English New Zealand**. Students from around the world enjoy a high-quality English language experience and an unforgettable life experience when they choose an English New Zealand school.

Language Cert

LanguageCert Approved Testing

Seafield School of English is an approved LanguageCert (IESOL) Testing Centre, offering candidates a reliable, stress-free, and familiar environment for their exams.

LanguageCert (IESOL) Testing Centre

As an approved Test Centre we focus on exams that cater to International Students

- Meets the English Language criteria to enter universities and polytechnics in New Zealand
- B2 Communicator, High Pass: Entry into Level 5 qualifications
- C1 Expert, Pass: Entry into Level 6 and 7 qualifications
- C1 Expert, High Pass: Entry into Level 8, 9 and 10 qualifications
- LanguageCert International ESOL
- Separate Written Exams (Listening, Reading and Writing) and Spoken Exams (Speaking), leading to two separate certificates
- Receive fast results and certificates

“I believe that the NZCEL is a very effective learning system that can help you catch up with college courses. I feel fortunate to be studying here with my teacher, Arghavan, who has a lot of patience and is experienced.”



Luna
 Seafield School of English Student

General English

Seafield's General English programme is designed to deliver the skills and knowledge needed to succeed in an English-based life. Students will improve their English language skills and gain confidence in their day-to-day life across listening, reading, speaking, writing, grammar and vocabulary.

The course material is relevant for a variety of intentions, including employment, test preparation, and for further tertiary study. We allow our learners the freedom to move between the different timings of our courses so their study can be flexible to changes in work and lifestyles. Classes are level-based: Beginner to Advanced levels*. Seafield's General English programme has a comprehensive six-weekly testing cycle so that you'll have the opportunity to measure and reflect upon your learning.

Intensive daytime classes

General English 8:15am - 12:30pm

+

Afternoon Elective Class 1:00pm-3:00pm

Standard daytime classes

General English 8:15am - 12:30pm + 1:00pm-5:10pm

Standard evening classes

General English 5:15pm - 9:15pm including independent task work of 30 minutes

Part-time options available

*Depending on class availability

IELTS Preparation

Our IELTS preparation programme is designed for learners in preparation for taking IELTS (International English Language Testing System). Learners should have a level of English of Intermediate (B1+) or higher to benefit from the classes, and should be aiming for an IELTS band score between 5.5 and 7.0. Our experienced tutors will provide the learning for the different question and task types, effective vocabulary and exam techniques that will help them achieve their target band score.

(Maximum class size: 20 students - 20 class hours/week)



NZ Certificate in English Language (Applied)

This programme is the perfect starting point for your journey into university study or employment in New Zealand. Over 16 weeks of study, you will be exposed to the everyday language for school, work and life. Completing NZCEL 3 (Applied) will directly qualify you for tertiary programmes at level 3 and 4 so you can start your preparation for work. It also prepares and qualifies you directly to the critical and challenging NZCEL4 (Academic) programme, which is a requirement for study at Level 5, 6 and 7.

(Maximum class size: 25 students - 20 class hours/week, 17.5 self-directed hours/week)

Course Content

During this programme, you'll develop the general English language skills that are required to listen, speak, read and write with increasing independence and fluency in academic, community or employment in New Zealand. Over the 16 study weeks, you will complete 12 assessments that demonstrate your skills. Study 12 Unit Standards and gain credits towards meeting university entrance literacy requirements.

English language scholarships available.

What is next

- NZSE Certificate (Level 3 or 4)
- Seafield's NZCEL Level 4 (Academic)

Duration

16 weeks + 1 week study break

Credits

60 Credits

Delivery

Auckland CBD
| Online (for off-shore students)

Entry Criteria

- Gained IELTS (General or Academic score) of 5.0 with no band score lower than 5 or higher in the 2 years before the start of the course
- OR - Oxford Online English test B2, with nothing below B1
- OR - LanguageCert: B1 Achiever or B2 Communicator Pass overall and no less than 25/50 in each skill and a Spoken PASS (ISESOL) in an official LanguageCert test, or Seafield LanguageCert mock test
- OR - Placed in or achieved a pass at Upper Intermediate level at Seafield School of English
- OR - Pearson Test of English score of 35 or more
- **Onshore international students require a valid visa and insurance to study on the programme.**
- **Offshore international students do not require a visa or insurance.**

NZ Certificate in English Language (Academic)

Do you want to qualify for programmes at level 5, 6 and 7, while learning real skills, and avoid doing IELTS or PTE? NZCEL4 Academic is perfect for you. Across 16 study weeks, you will be trained how to use your English in university situations, from listening to lectures, to working in groups and presenting your ideas. You will learn how to read extensively and write to the level required for university.

(Maximum class size: 25 students - 20 class hours/week, 17.5 self-directed hours/week)

Course Content

This programme aims to provide you with the language competency in academic contexts which will enable your pathway to further tertiary study. It sets out to further advance your skills across speaking, listening, reading, writing, as well as critical thinking. Plus, it helps develop both confidence and study skills so that you're able to undertake independent learning at the tertiary level, with further tertiary study pathways.

Study five English for Academic Purposes Unit Standards and gain credits towards meeting University Entrance literacy requirements.

[English language scholarships available.](#)

What is next

- Seafield NZCEL5 (Academic)
- NZSE Diploma (Level 6 and above)*
- NZSE Diploma in Community Healthcare and Support (Level 7)*
- NZSE Diploma in Applied Network and Cloud Technology (Level 7)*
- Bachelor Degree and above*

Duration

16 weeks + 1 week study break

L4

Credits

60 Credits

Delivery

Auckland CBD
| Online (for off-shore students)

Entry Criteria

- IELTS (Academic): 5.5 with no individual score below 5.0 (within the last 2 years)
- Oxford Online English test: B2, with nothing below B1
- OR - Seafield English Language Tuition: Upper Intermediate Summative test Overall Pass; No section failed
- OR - Pearson's Test of English: At least 42 with no band lower than 36 (within the last 2 years)
- OR - New Zealand Certificate of English Language: Level 3 (Applied)
- OR - LanguageCert: B2 Communicator Pass overall and no less than 25/50 in each, and a Spoken PASS (ISESOL) in an official LanguageCert test, or Seafield LanguageCert mock test.
- **Onshore international students require a valid visa and insurance to study on the programme.**
- **Offshore international students do not require a visa or insurance.**

NZ Certificate in English Language (Academic)

Planning on studying post-graduate, Masters or doctorate level in New Zealand? NZCEL5 (Academic) is the best preparation you can ever have. It develops your skills and understanding of the requirements for success at this level of study. Your learning tasks and assessments are the same as what you will be doing in university, whether it be literature review, thesis proposal, report writing or group work. Completion of NZCEL5 (Academic) directly qualifies you to your next study without the need for IELTS or other entry testing.

(Maximum class size: 25 students - 20 class hours/week, 17.5 self-directed hours/week)

Course Content

The programme aims to provide you with the language competency in academic contexts which will enable your pathway to further high-level tertiary study. It sets out to further advance skills ranging across speaking, listening, reading and writing, enabling you to undertake independent learning at a post-graduate, Master's and doctorate level.

[English language scholarships available.](#)

Further Study

- Pathway to post-graduate, Master's and Doctorate level of studies in New Zealand.

Duration

16 weeks + 1 week study break

L5

Credits

60 Credits

Delivery

Auckland CBD
| Online (for off-shore students)

Entry Criteria

- IELTS (Academic): 6.0 with no individual score below 5.5 (within the last 2 years)
- OR - Seafield English Language Tuition: Upper Intermediate Summative test: Distinction; No section failed. Advanced or Upper Advanced Summative test: Pass; No section failed
- OR - Pearson's Test of English: PTE (Academic) score of 50 with no band score lower than 42
- OR - New Zealand Certificate of English Language: Level 4 (Academic) or Level 4 (General)
- OR - LanguageCert: C1 Expert Official Test Pass; or Seafield LanguageCert C1 Expert Mock Test pass; or an equivalent to those listed as meeting entry criteria for a Level 5 qualification on the NZQA Table of Internationally Recognised English Proficiency Outcomes for International Students.
- **Onshore international students require a valid visa and insurance to study on the programme.**
- **Offshore international students do not require a visa or insurance.**



Foundation Studies at NZSE

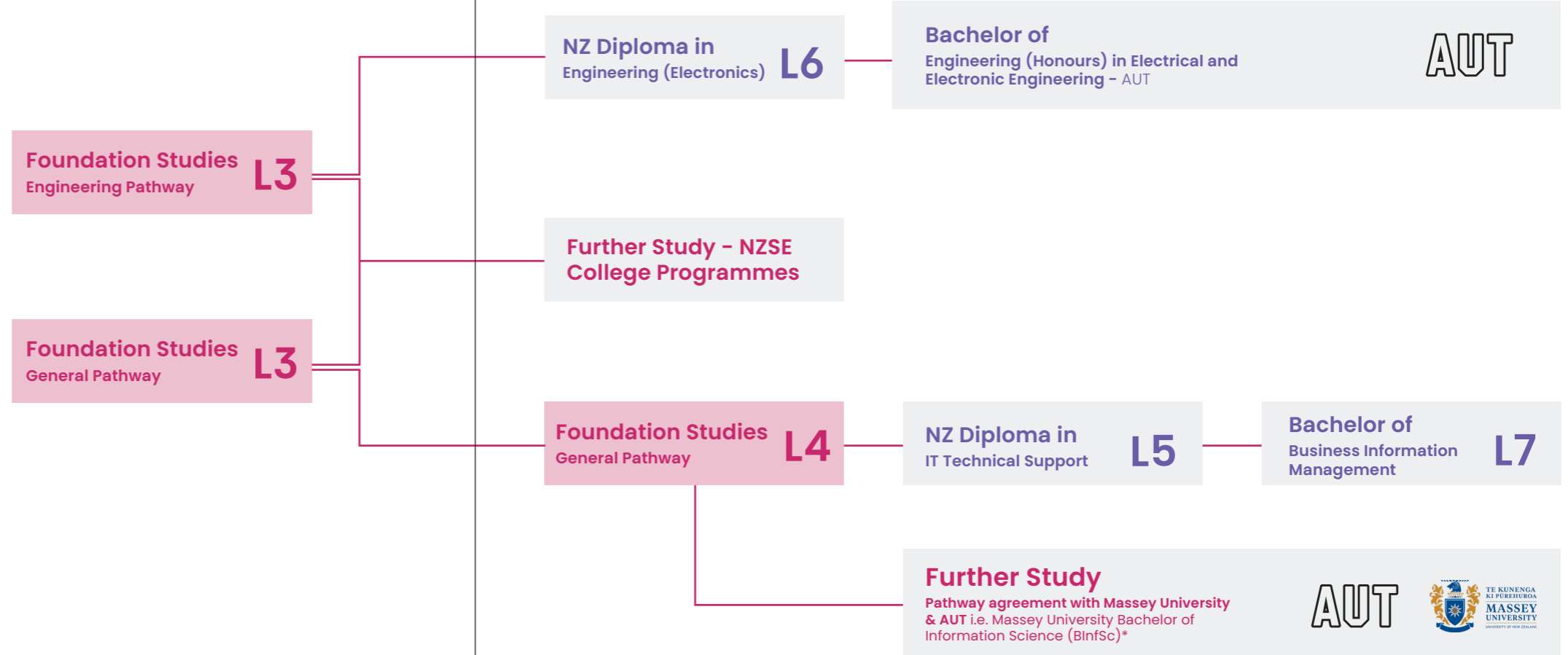
TE ARA

Are you ready to unlock new career opportunities and enhance your employability?

Foundation Studies equips learners with the essential skills, knowledge, and personal attributes needed to succeed in higher-level academic study and employment in fast-growing New Zealand sectors such as technology, business, agriculture, and tourism.

These programmes are designed to develop confidence and boost learners to new heights in emerging industries with an increasing demand for skilled workers. Focusing on developing core communication, problem-solving, and decision-making abilities, learners work on collaborative projects that simulate real-world challenges. Foundation Studies also broaden our learners' understanding of their own and other cultures and values, preparing them to succeed and make informed decisions in multicultural environments.

Further Study & Career Pathways



*Terms and conditions apply. Contact us for more information.

Industry Roles



Cybersecurity Analyst



System Administrator



Business Analyst



Network Engineer



Help Desk Technician



IT Support Specialist



Data Analyst



Junior Engineer



Project Engineer



Research Assistant

NZ Certificate in Foundation Studies General Pathway

L3

This programme is for students who aim to pursue development of their personal skills, capabilities, knowledge, and attributes to give the learner the confidence and strategies that will improve their ability to succeed at higher-level studies and entry-level employment in engineering, uniformed services or another chosen field.

The programme design and delivery will incorporate pedagogical principles and cultural practices reflective of Te Tiriti o Waitangi, Te Ao Māori, Pasifika cultures and their world views.

The programme is designed to develop learners' core communication, problem solving and decision-making skills within the context of their selected educational and/or employment pathways, and develop their ability to work in groups and consult with people from other cultures. This will provide a great pathway to higher study or employment.

Course Content

CSEP3001 – Culture and Communication (General Pathway)

This course provides learners the opportunity to develop and expand their knowledge and understanding of their own and other cultures and values, and how these might impact on communication between them and others in Aotearoa New Zealand, whilst working on a design project.

CSEP3002 – Manage Self and Studies (General Pathway)

This course aims to equip learners with the tools to develop a personal goal-setting plan, and evaluate their unique qualities, skills and strengths that define their rangatiratanga.

CSEP3003 – Programming Project (General Pathway)

This course aim is to equip the learners with the skills and knowledge of basic programming concepts and techniques. Learners will evaluate the qualities and strengths that define their rangatiratanga.

CSEP3004 – Problem Solving and Decision Making (General Pathway)

This course provides learners with the tools, techniques, and skills in identifying problems, finding and communicating solutions. Learners will also gain knowledge about probability and statistics.

Duration

16 weeks + 2 weeks
study break

L3

Credits

60 credits

Delivery

Auckland CBD

Entry Criteria

There are no compulsory academic entry requirements, however enrolling learners are recommended to hold:

- NCEA Level 1 qualifications or equivalent.
- The minimum of step 3 Literacy and step 3 Numeracy on the Adult Learning Progressions or equivalent.
- **Onshore international learners require a valid visa and insurance to study on the programme.**
- **Offshore international learners do not require a visa or insurance.**

Language Requirements

Applicants must have sufficient competence in the English language to undertake the Programme which is taught and assessed in English.

International learners must meet the English Proficiency Outcomes for International learners as set out in Appendix 1 of the NZQF Programme Approval and Accreditation Rules.

Further Study

- Certificate in Foundation Skills (Level 4)
- Further study or training related to the context of their chosen pathway.



NZ Certificate in Foundation Studies Engineering Pathway

L3

This programme is for students who aim to pursue development of their personal skills, capabilities, knowledge, and attributes to give the learner the confidence and strategies that will improve their ability to succeed at higher-level studies and entry-level employment in engineering.

Learners will also have the opportunity to develop their knowledge and understanding of varying cultures and values, and how these might impact on communication between them and others in Aotearoa New Zealand, whilst working on a design project.

Course Content

CSEP3001 – Culture and Communication (Engineering Pathway)

This course provides learners the opportunity to develop and expand their knowledge and understanding of their own and other cultures and values, and how these might impact on communication between them and others in Aotearoa New Zealand, whilst working on a design project.

CSEP3002 – Manage Self and Studies (Engineering Pathway)

This course aims to equip learners with the tools to develop a personal goal-setting plan, and evaluate their unique qualities, skills and strengths that define their rangatiratanga.

CSEP3003 – Programming Project (Engineering Pathway)

This course aim is to equip the learners with the skills and knowledge of basic programming concepts and techniques. Learners will evaluate the qualities and strengths that define their rangatiratanga.

CSEP3005 – Engineering Maths and Drawing

This course aims to develop learners' fundamental skills and knowledge of mathematical techniques and functions to identify and solve problems relevant to engineering. Learners will also gain basic drawing skills used in the field of engineering.

Duration

16 weeks + 2 weeks
study break

L3

Credits

60 credits

Delivery

Auckland CBD

Entry Criteria

There are no compulsory academic entry requirements, however enrolling learners are recommended to hold:

- NCEA Level 1 qualifications or equivalent.
- The minimum of step 3 Literacy and step 3 Numeracy on the Adult Learning Progressions or equivalent.
- **Onshore international learners require a valid visa and insurance to study on the programme.**
- **Offshore international learners do not require a visa or insurance.**

Language Requirements

Applicants must have sufficient competence in the English language to undertake the Programme which is taught and assessed in English.

International learners must meet the English Proficiency Outcomes for International learners as set out in Appendix 1 of the NZQF Programme Approval and Accreditation Rules.

Further Study

- Certificate in Foundation Skills (Level 4)
- New Zealand Diploma in Engineering (Level 6) [upon completion of Certificate in Foundation Skills Level 4]
- Further study or training related to the context of their chosen pathway.

NZ Certificate in University Preparation

L4

The programme has been designed to meet the needs of learners wishing to study in higher education and/or employment. This pathway will cater for learners wishing to progress to academic study, such as NZSE's Bachelor of Business and Information Management or other university-level studies e.g., at Massey University or AUT University. Pathway Agreements with these universities have been included in respectively appendices 5 and 6.

Distance Online (offshore) learners have clearly mapped out pathways to higher level studies. Learners will greatly benefit from this Foundation and Bridging programme, including the knowledge they will gain about Aotearoa's indigenous culture. They will become familiar with te reo me ngā tikanga Māori, as well as Pasifika cultures, assuring a smooth transition to studying in a higher-level programme with a New Zealand training institute.

Course Content

CSEP4001 Statistics and Data Handling Project

This course provides learners with basic knowledge about and skills in statistics and data handling.

CSEP4002 Collaborative Pathways Project

This course gives learners the opportunity to gain insights into their qualities and the strength of their rangatiratanga as applicable to their study pathways.

CSEP4003 Employment Medium & Reflection/Aromatawai Portfolio

This course provides learners with the ability to present an evaluative report on job recruitment medium that have the potential to benefit the learner's career.

CSEP4004 Personal Branding Evaluation

This course equips learners with the ability to improve their personal branding through research and self-evaluation, benefiting their future in study and employment

Duration

16 weeks + 2 weeks study break

L4

Credits

60 credits

Delivery

Auckland CBD

Entry Criteria

There are no compulsory academic entry requirements, however enrolling learners are recommended to hold:

- NCEA Level 2 qualifications or equivalent or have progressed from New Zealand Certificate in Study and Employment Pathways Level 3.
- The minimum of step 4 Literacy and step 3 Numeracy on the Adult Learning Progressions or equivalent.
- **Onshore international learners require a valid visa and insurance to study on the programme.**
- **Offshore international learners do not require a visa or insurance.**

Language Requirements

Applicants must have sufficient competence in the English language to undertake the Programme which is taught and assessed in English.

Learners whose first language is not English must provide evidence of competency in English language equivalent to IELTS Academic score of 5.5, with no band score lower than 5

Further Study

- Pathway agreement with Massey University & AUT i.e. Massey University Bachelor of Information Science (BInfSc)*

*Terms and conditions apply. Contact us for more information.



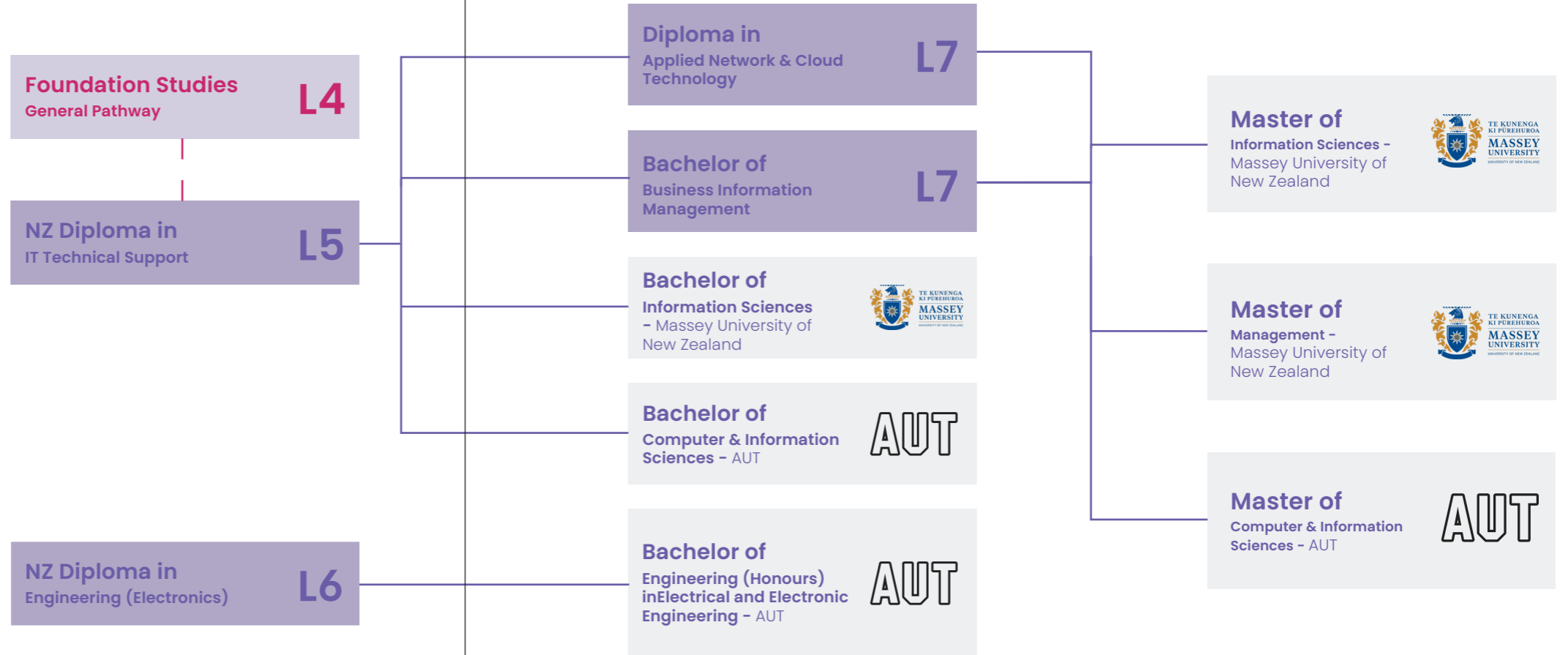
Study Tech at NZSE

TE KURA HANGARAU MŌHIOHIO PAKIHI

Whether you are taking your first steps in technology or looking to upskill, NZSE's technology programmes will get you job-ready with relevant skills that span a spectrum of industries.

As the world continues to rapidly embrace technology across all fields, the value of technology experts only increases. Our programmes provide a gateway for learners to become tech superstars with a highly competitive skill set. NZSE's experienced tutors keep you up to date with both the skills and qualifications that employers are looking for. From day one you'll connect with our industry partners, and industry-based projects will prepare you for the modern workplace well before you graduate.

Our Pathways



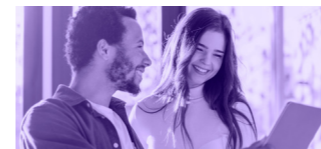
Myles Foster
Kiwi Computers
Owner & Operator

"I've been interested in tech since I was 10 years' old. Thanks to the help and support from NZSE, I rediscovered my passion for it and now have my own PC repair shop."

Industry Roles



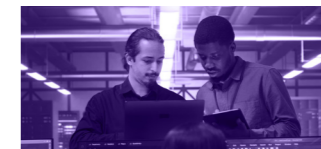
IT Technician



Help Desk Technical Support



Security Analyst



Cloud Administration



Applications Support Analyst



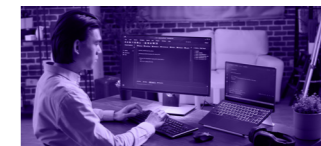
Business Analyst



Computer Technician



Full-Stack Developer



System & Network Administration



Software Testing



NZ Diploma in IT Technical Support

L5

This programme will provide you with a broad understanding of the core concepts and practical skills in IT, with a technical support focus. You will develop an awareness of the IT environment and understand the needs of users. You will operate within the applicable professional standards and practice, as part of a team, or independently with a broad level of supervision.

Course Content

IT501 Network Technologies	The course provides students with fundamental concepts of networking, configuring secure user systems, and troubleshooting networks. Introduces virtualisation and cloud technologies. Technology used: Networking hardware, virtualisation tools, and cloud technologies.
IT502 Programming 1	Basic concepts of programming that helps learners to develop skills to design, write, test and debug computer programs Technology used: Microsoft Visual Studio and Git
IT503 Technology in Society	Introduction to the evolution of computing and its impact on society. Emphasis on the need for ethical IT professionals and collaboration to address societal technical needs Technology used: Online collaboration tools, communication platforms, data management tools
IT504 Web Design and Database Application	Provides skills and knowledge to design and create robust websites implementing HCI principles, usability testing along with knowledge about the database fundamentals Technology used: Figma, Lucid Charts, Wix, MS Access
ITTS505 Computer Network Principles	Provides fundamental knowledge and skills to build, configure, deploy and troubleshoot computer network. Helps learners apply monitoring systems to ensure network availability and resolve network issues Technology used: Cisco Packet Tracer, Oracle VirtualBox
ITTS506 Operating Systems	Provides skills to install, configure, troubleshoot OS in business environments using CLI and GUI utilities. Emphasis on database optimization and security risks management Technology used: Windows, Linux, MacOS, CLI and GUI-based tools, DBMS optimisation tools
ITTS507 Security Fundamentals	Introduces fundamental network security concepts, identifying threats and vulnerabilities, applying security best practices, and tools to mitigate risks. Technology used: Networking monitoring tools, firewalls, intrusion detection/prevention systems (IDS/IPS), risk management frameworks
ITTS508 IT Support and Services Management	Provides skills and knowledge to apply the concepts of IT service Management to plan, deliver and support IT services

Further Study

- Diploma in IT Software Development Level 6
- Diploma in Applied Network & Cloud Technology Level 7
- Bachelor in Business Information Management

L5

Duration

1 Academic Year

Credits

120 Credits

Delivery

Auckland CBD
| Online (for off-shore students)

This qualification begins your preparation for the following certifications:



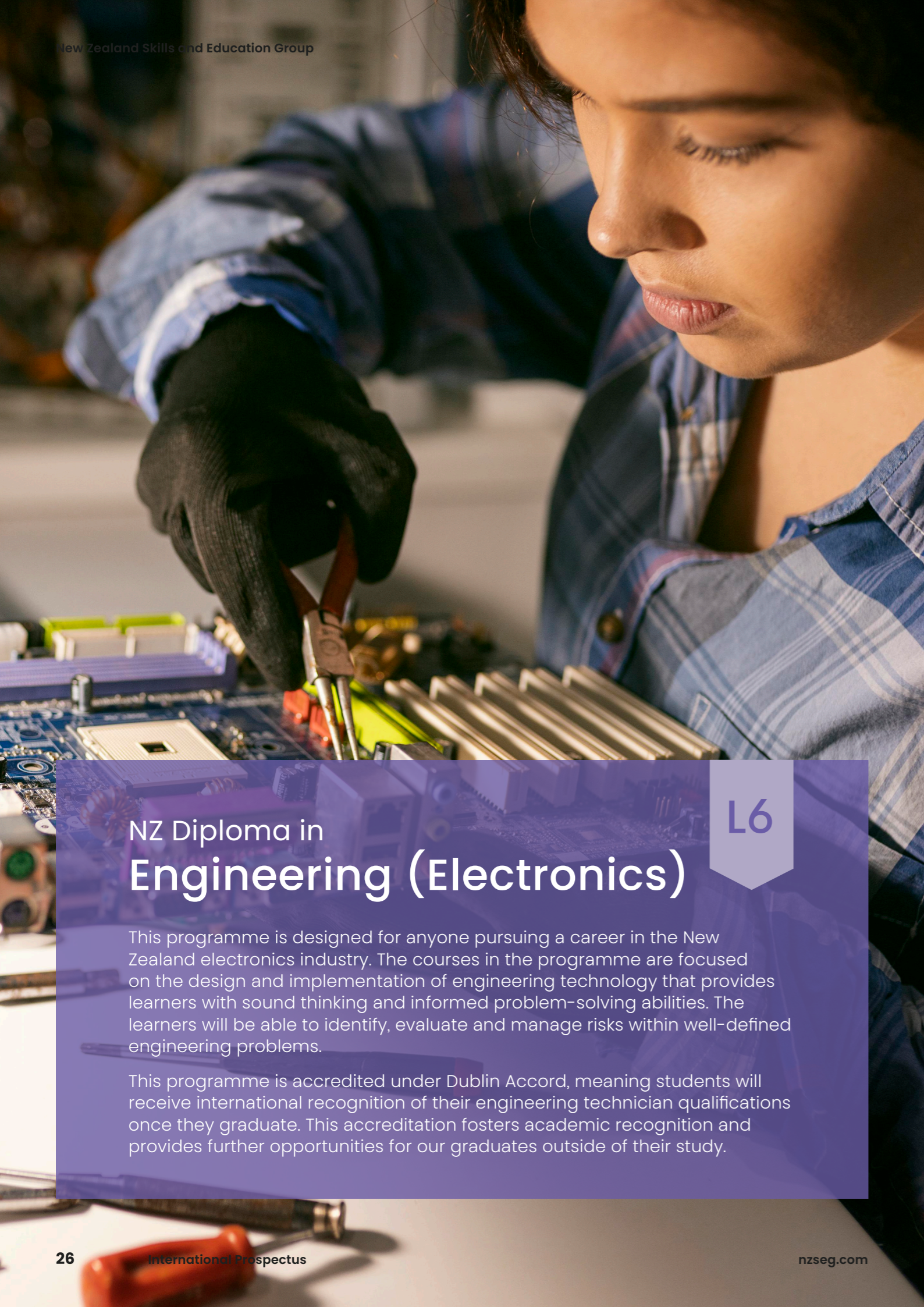
This Diploma can be cross credited to 60-120 Credits into a University Bachelor degree*



Entry Criteria

- Open entry with interview
- Preference will be given to students with qualification in Information Technology Level 3/4 and above, and/ or NCEA level 2/3 OR overseas high school certificate
- IELTS Academic score of 5.5 with no band less than 5.0 or NZCEL (Academic) Level 4 or equivalent
- Onshore international students are required to have a valid student visa or insurance
- Offshore online students do not require a student visa or insurance

*Terms and conditions apply. Contact us for more information.



NZ Diploma in Engineering (Electronics)

L6

This programme is designed for anyone pursuing a career in the New Zealand electronics industry. The courses in the programme are focused on the design and implementation of engineering technology that provides learners with sound thinking and informed problem-solving abilities. The learners will be able to identify, evaluate and manage risks within well-defined engineering problems.

This programme is accredited under Dublin Accord, meaning students will receive international recognition of their engineering technician qualifications once they graduate. This accreditation fosters academic recognition and provides further opportunities for our graduates outside of their study.

Course Content

Electronics or Clinical Engineering elective options available

YEAR ONE (5x 15 Credits at Level 4 + 3x 15 Credits from Level 5 = 120 Credits)			
SEMESTER 1			
Level 4	Level 4	Level 4	Level 4
DE4101: Engineering Fundamentals	DE4102: Engineering Mathematics 1	DE4103: Technical Literacy	DE4401: Electrical Principles
SEMESTER 2			
Level 5	Level 5	Level 4	Level 5
DE5405: Computer Programming 1	DE5408: Introduction to Networks or DE5243: CAD Electrical	DE4402: Electrical and Electronic Applications	DE5403: Electronic Principles
YEAR TWO (3x 15 Credits at Level 5 + 5x 15 Credits from Level 6 = 120 Credits)			
SEMESTER 1			
Level 5	Level 6	Level 5	Level 5
DE5414: Electronic Manufacturing 1	DE5405: Computer Programming 2	DE5407: Electronics 1 or DE5421: Anatomy & Physiology	DE5406: Microcontrollers 1 or DE5422: Medical Equipment 1
SEMESTER 2			
Level 6	Level 6	Level 6	Level 6
DE6102: Engineering Project - Electronics	DE6101: Electronic Management	DE6402: Electronics 2 or DE6423: Fault Finding	DE6417: Microcontrollers 2 or DE6424: Medical Equipment 2

You will develop an understanding of:

- Engineering fundamentals and theory
- Principles of engineering science
- Electronic design and drawing
- Electrical and electronics principles
- Introduction to networks
- Software programming
- Micro-controller programming
- Electronic manufacturing
- Healthcare technology

Gain the essential knowledge needed to set up solid functions in the electronics engineering field. Learn about the design, development, and maintenance of electronics circuitry used in different types of equipment used in TV, radio, computers, smartphones, and IoTs.

Further Study

- Bachelor of Engineering Technology (Electrical) - AUT
- Bachelor of Engineering (Electrical and Electronics) - AUT

Duration

2 Academic Years



Credits

240 Credits

Delivery

Auckland CBD

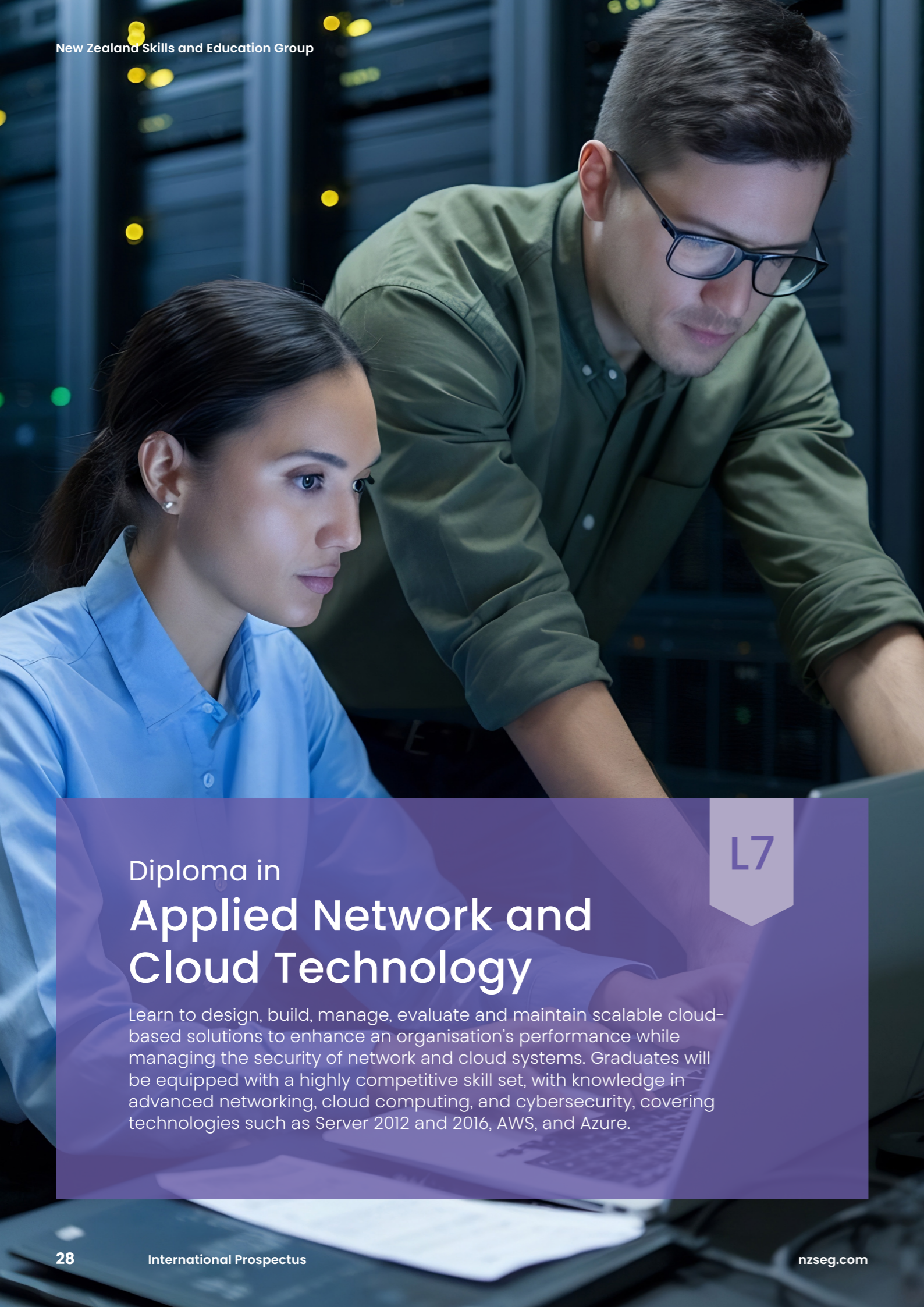
Entry Criteria

- NCEA Level 2*, and
- A minimum total of 48 credits at level 2 in four subjects including at least 12 Credits in mathematics (preferably achievement standards in algebra, calculus or trigonometry), or
- equivalent qualifications (e.g. International Baccalaureate or Cambridge), or
- equivalent credits from appropriate trades training and/or demonstrated skills and experience

* including a minimum of 10 literacy Credits at level 1 or higher (for those who achieved NCEA Level 2 before 2013)

Language Requirements

In addition to meeting the minimum entry criteria, for those applicants which English is their second language, overall IELTS language requirements apply: Overall Band Score (Academic) of 6.0 IELTS, with no individual score less than 5.5, or equivalent.



L7

Diploma in Applied Network and Cloud Technology

Learn to design, build, manage, evaluate and maintain scalable cloud-based solutions to enhance an organisation's performance while managing the security of network and cloud systems. Graduates will be equipped with a highly competitive skill set, with knowledge in advanced networking, cloud computing, and cybersecurity, covering technologies such as Server 2012 and 2016, AWS, and Azure.

Course Content

- DNCT603 Network Infrastructure and Administration** Comprehensive introduction to networking fundamentals, with practical skills in designing, configuring, and administering LANs.
Technology used: Cisco Packet Tracer, Oracle VirtualBox, switches, Firewalls, Active Directory, DNS, DHCP, VPN
- DNCT604 Cloud Infrastructure and Administration** Provides a deep understanding of cloud service providers, deployment models, and hands-on experience in configuring and provisioning resources on Microsoft Azure
Technology used: Microsoft Azure
- DNCT701 Wireless Network Systems** Equips students with skills to configure, manage, and troubleshoot wireless LANs, with hands-on experience in designing networks and implementing VLANs.
Technology used: CISCO Packet Tracer, Oracle VirtualBox, VLANs, Wireless LANs
- DNCT702 Internet-of-Things (IoT)** Introduction to IoT applications and architecture, focusing on practical implementations using Raspberry Pi.
Technology used: Raspberry Pi, Python, Azure IoT Hub
- DNCT703 Network and Cloud Security** Covers security principles, threats, and best practices for securing network and cloud environments, with topics including encryption, wireless, and web security.
Technology used: Cryptography, Performance monitoring, Vulnerability assessments, Backup and Disaster Recovery
- DNCT704 Network and Cloud Design and Assessment** Focuses on designing and assessing network and cloud infrastructure for performance, scalability, and reliability.
Technology used: Network Monitoring Tools (e.g., SolarWinds), Cloud platforms
- DNCT705 Industry-based Project** Practical hands-on project applying knowledge and skills to real-world scenarios (in network, security and/or cloud technologies), involving project management methodologies
Technology used: Project Management Tools, others (depends on the project)
- DNCT706 Internship** Internship with an industry focus to gain hands-on experience in network, security and/or cloud technologies, involving project management methodologies.
Technology used: Project Management Tools, others (depends on the internship work offer)

Further Study

- Master of Computer and Information Sciences (AUT)
- Master of Information Sciences (Massey University)

Duration

1 Academic Year



Credits

120 Credits

Delivery

Auckland CBD
| Online (for off-shore students)

This qualification begins your preparation for the following certifications:



Gain access to Higher level study at our Partner Universities*



Entry Criteria

- International applicants must hold a relevant and recognised Degree Level qualification equivalent to at least 360 Credits at NZQA Level 7 or equivalent
- International students are required to have an International English Language Test System (IELTS) Academic score of 6.0 with no individual band score lower than 5.5; or equivalent and hold a valid study visa to enrol in this programme
- Onshore international students are required to have a valid student visa or insurance
- Offshore online students do not require a student visa or insurance

*Terms and conditions apply. Contact us for more information.

Bachelor of Business Information Management

L7

With the increasingly relevant combination of business and IT, this multi-disciplinary programme provides you with cutting-edge and world-leading specialist technical skills required to excel in any type of organisation. With both theoretical and practical hands-on learning, you'll be equipped with vital communication, analytical and problem-solving skills – and complete industry projects that provide networking and experience opportunities.

Duration 3 Academic Years	Credits 360 credits	Delivery Auckland CBD/ Blended
-------------------------------------	-------------------------------	---

Entry Criteria Applicants are required to have:

University Entrance: (As specified by NZQA) NCEA Level 3 comprised of 60 Credits at NCEA Level 3 or above and 20 Credits at NCEA Level 2 or above, including one of the following:

- 14 Credits each at NCEA Level 3 in three approved subjects + UE Literacy (10 Credits at NCEA Level 2 or above made up of 5 Credits each in reading and writing) + UE Numeracy (10 Credits at NCEA Level 1 or above) made up of specified achievement standards or a package of specified unit standards
- 72 Credits at NCEA Level 2 including: A minimum of 14 Credits in each of four subjects + UE Literacy (10 Credits at NCEA Level 2 or above made up of 5 Credits each in reading and writing) + UE Numeracy (10 Credits at NCEA Level 1 or above)
- UE equivalent in Cambridge International Examinations. (CIE 120 rank score).
- A relevant qualification at Level 3 on the NZQF or above and the equivalent of UE Literacy and UE Numeracy.
- The New Zealand Certificate in IT Essentials (Level 4)
- A New Zealand or overseas qualification assessed to be equivalent to GPA of 5 or higher by the Head of School.
- Passes in other certificate/diploma qualifications or courses with a GPA of 5 or higher by the Head of School.

International students must meet; the General Admission criteria (or equivalent); the English language requirements; and hold a valid study visa to enrol in this programme.

Special admission could be provided based on the approval of the Academic Director. Talk to us if you want to know more.

Start your career as (based on your choice of major).

Business Information Systems Major:

- IT Technical Support Officer
- Systems Analyst
- Applications Developer
- Business Analyst
- Process Analyst
- Systems Developer
- Application Analyst
- Cybersecurity Analyst

Integrated Marketing Communications Major:

- Customer Insights Analyst
- Web Content Creator
- Communications Analyst
- Marketing Analyst
- Consumer Marketing Coordinator
- Marketing Strategist
- Rebranding Assistant
- Social Media Specialist
- Sales Development Representative
- Digital Marketing Coordinator

Data Analytics Major:

- Data Analyst
- Business Insights Analyst
- Data Insights Analyst
- Research Analyst
- Database Developer Administrator
- Business Intelligence Analyst
- Quantitative Analyst
- Data Warehouse Engineer
- Machine Learning Analyst
- Marketing Data Analyst
- Social Media Data Analyst

Course Content

YEAR ONE (8 x 15 Credits = 120 Credits at Level 5)								
	SEMESTER 1				SEMESTER 2			
All Majors	BBIM501: Applied Statistics for Business	BBIM502: Introduction to Programming	BBIM505: Professional Practice and Communications	BBIM504: Information Systems Fundamentals	BBIM503: Digital Transformation in Business	BBIM506: Introduction to Data Science	BBIM507: Sustainable Business	BBIM508: Social Media Networks
YEAR TWO (8 x 15 Credits = 120 Credits at Level 6)								
	SEMESTER 1				SEMESTER 2			
BUSINESS INFORMATION SYSTEMS (BIS) MAJOR	BBIM605: Security Practices in Business	BBIM607: Business Needs Analysis	BBIM603: Database Fundamentals	BBIM604: Data Collection and Analysis	BBIM615: Project Management	BBIM606: Integrated Marketing	BBIM602: Interface Design & User Experience	BBIM608: Data & Process Modelling
INTEGRATED MARKETING COMMUNICATIONS (IMC) MAJOR	BBIM605: Security Practices in Business	BBIM607: Business Needs Analysis	BBIM609: Marketing Fundamentals	BBIM604: Data Collection and Analysis	BBIM615: Project Management	BBIM606: Integrated Marketing	BBIM602: Interface Design & User Experience	BBIM610: Digital Marketing
DATA ANALYTICS (DA) MAJOR	BBIM605: Security Practices in Business	BBIM611: Mathematics for Data Science	BBIM603: Database Fundamentals	BBIM604: Data Collection and Analysis	BBIM615: Project Management	BBIM612: Data Transformation & Management	BBIM613: Data Visualisation	BBIM614: Data Warehousing and Mining
YEAR THREE (4x 15 Credits and 1x 45 Credits = 105 Credits at Level 7, plus 1x 15 Credits from Level 6)								
	SEMESTER 1				SEMESTER 2			
BUSINESS INFORMATION SYSTEMS (BIS) MAJOR	BBIM601: Business Intelligence	BBIM703: Business Process Management	BBIM701: Information Security Management	BBIM702: Enterprise Information Systems	BBIM714: Emerging Trends & Technologies in BIS	BBIM711: Capstone Project - BIS 45 Credits		
INTEGRATED MARKETING COMMUNICATIONS (IMC) MAJOR	BBIM601: Business Intelligence	BBIM706: Entrepreneurship and New Venturing	BBIM704: Services Marketing Management	BBIM705: Brand Management	BBIM715: Emerging Trends & Technologies in IMC	BBIM712: Capstone Project - IMC 45 Credits		
DATA ANALYTICS (DA) MAJOR	BBIM601: Business Intelligence	BBIM709: Big Data Analytics	BBIM707: Advanced Data Engineering	BBIM708: Machine Learning and AI	BBIM716: Emerging Trends & Technologies in DA	BBIM713: Capstone Project - DA 45 Credits		

This programme prepares students towards the following certifications*



*Terms and conditions apply. Contact us for more information.



Study Health at NZSE

TE KURA ORANGA HAUORA

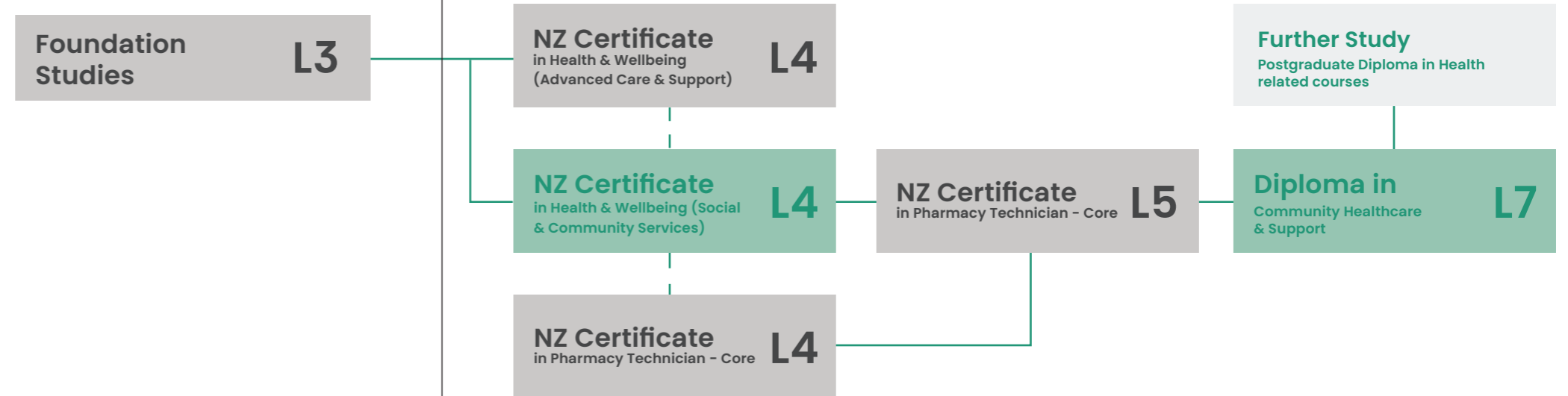
Are you passionate about supporting the health and well-being of our communities?

Contribute meaningful value to Aotearoa New Zealand through promoting wellness, preventing illness, and providing compassionate care to others. Grow with in-depth professional knowledge while experiencing real-world work environments with healthcare-related internships that set you up for the next stage of a dynamic career. NZSE's School of Health provides a welcoming and accessible environment for you to pursue your studies. Led by passionate, experienced tutors, our holistic and innovative programmes provide you with entry points at any level to start your studies and progress in various in-demand professional roles.

"I met new friends and enjoyed hanging out with other students from different cultural backgrounds. After a couple of months I became a one of the top students from Healthcare Level 3."

Lesona Seuluga
Health Graduate

Our Pathways



Wage Rates in New Zealand



Graduation from the School of Health programmes prepare you for a workplace with Pay Equity ranging from ranging from \$24.78 to \$29.10 per hour in New Zealand.

- Support Workers (Pay Equity) Settlements Amendment Act 2022

Industry Roles



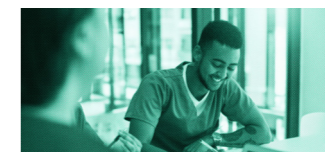
Community Health Worker



Support Worker



Care Giver



Healthcare Educator



Healthcare Assistant



Healthcare Worker



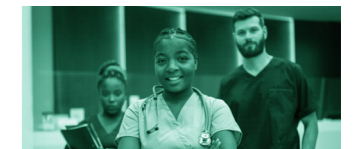
Support Team Leader



Pharmacy Technician



Community Pharmacy Technician



Team Leader



NZ Certificate in Health & Wellbeing (Social and Community Services)

L4

with Strands in Mental Health and Addiction Support and Disability Support

One in four New Zealanders have some form of disability, whether it is physical, psychological, or sensory. Pursue your passion for helping this part of our population and study to specialise in disability support or mental health and addiction support with this certificate.

Learn the responsibilities of support workers and how they care for their patients' mental health or disability challenges, and their families. Graduates will be prepared for entry-level roles in a mental health facility and an addiction or disability support organisation.

Course Content

There are 7 courses in the Level 4 programme:

HLTH 4011 - Effective Communication and Engagement
This course prepares students to advocate for individuals and families in social support settings, emphasizing culturally sensitive, cross-cultural, and person-centered communication. Students will develop skills in leadership, advocacy, and principles like whakawhanaungatanga, kaitiakitanga, and mauri ora to strengthen socio-cultural identity and self-awareness in community services.

HLTH 4012 - Cultural Competency in the Context of Māori Wellbeing
This course explores Te Tiriti o Waitangi and Māori cultural principles to address health disparities in New Zealand. Students will study colonial history, Te Whare Tapa Whā, and culturally safe healthcare strategies, analyzing the roles of whānau, hapū, and iwi in supporting Māori well-being in social services.

HLTH 4013 - Personal Leadership and Reflective Practice in Healthcare
This course develops leadership, self-care, and culturally safe practices for health and well-being. Students will explore leadership styles, teamwork, communication, and reflective practices, including Hauora Māori's four dimensions. They will learn to assess leadership skills, apply self-care strategies, and understand empathy's impact on healthcare outcomes.

HLTH 4014 - Professionalism, Safety, and Quality in Healthcare
This course provides a deep understanding of professionalism, safety, and quality in health settings. Topics include healthcare ethics, codes of practice, whānau collaboration, and regulatory standards. Students will explore key qualities for professionalism, analyze culturally safe practices, and learn how health professionals support quality care for tangata whai ora.

HLTH 4018 - Introduction to Disability Support in Aotearoa/NZ
This course builds students' understanding of disability support services and the role of support workers in New Zealand. Topics include disability strategies, cultural safety, and best practices. Students will evaluate services, explore autonomy-support tools, and develop skills in de-escalation, stress management, and self-care.

HLTH 4019 - Disability Support Workers
This course expands students' knowledge of professionalism, community integration, and ethics in disability support, covering rehabilitation, health equity, new technologies, and best practices. Students will apply risk management and use tools to support independence and rights for disabled individuals.

HLTH 4020 - Disability Support - Practicum
This course provides practical experience in disability support, emphasizing professionalism, communication, and autonomy-enhancing tools. Topics include ethical practice, assistive technologies, and strategies for supporting tangata whai ora and their whānau. Students will apply skills to address daily challenges, assess sector impacts, and reflect on fostering independence and quality of life.

Further Study

- New Zealand Certificate in Public Health and Health Promotion Level 5
- New Zealand Diploma in Addiction Studies (Applied) Level 6
- Higher-level study in related health and wellbeing subject areas.

Duration

34 weeks + 6 weeks study break

+ 200hrs

Work Placement

Credits

120 Credits

Delivery

New Lynn | Hamilton | Online (Nationwide)



This programme will also prepare you for further studies in the Healthcare and aged care sector

or

prepare you for the workplace with pay parity starting at \$29.10 per hour (starting from 1 Jan 2024)

health.govt.nz

Entry Criteria

- 4 years of secondary school education
- IELTS academic score of 5.5 with no band less than 5.0 or NZCEL Level 3 (Applied) or equivalent

Diploma in Community Healthcare and Support

L7

This programme is increasingly relevant due to New Zealand's strong demand for key staff in the healthcare sector. NZSE's experienced and passionate tutors are proud to mentor students in performing high-quality healthcare, ultimately contributing to their communities and easing the skill shortage.

After completion, you will graduate with the practical skill set and technical knowledge required to provide holistic and compassionate care in palliative and aged care, rehabilitation, health promotion and primary healthcare.

Course Content

There are 7 courses in the DCHS7 programme:

HLTH6001: Primary Health Care In this course, students will explore how socio-political and cultural factors affect health, focusing on health promotion, prevention, and primary healthcare tailored to diverse needs. It will also cover governance, policy, legislation, and financial influences on healthcare in Aotearoa/New Zealand, including critiques of Ministry of Health strategies and guidelines.

HLTH6002: Rehabilitation In this course, students will develop skills for managing workers' compensation and return-to-work programs across various industries. They will learn to plan, design, implement, and evaluate injury management systems and compensation processes that incorporate cultural perspectives and health determinants.

HLTH7001: Professional Practice and Legislation In this course, students will explore the roles, functions, and legislation of health services, along with the scope of practice for health professionals. They will gain insight into various employment opportunities to help inform their future career decisions.

HLTH7002: Research for Health Care Practice This course introduces key research principles, equipping students with skills for purposeful reading, critical analysis, and practical application of research in healthcare. Students will explore the role of research in advancing healthcare in Aotearoa/New Zealand and critically examine various methodologies used in evidence-based practice.

HLTH7003: Geriatric Care This course will explore the holistic health of the older adult from a psychological, psychological, socioeconomic, spiritual, political and cultural view. The students will explore the concept of positive aging, life expectancy and quality of life.

HLTH7004: Palliative Care – Tiakina Maioha Students will investigate concepts of quality of life and dying, considering legal, ethical, cultural, religious, and personal perspectives. They will critically examine the holistic complexities of life-threatening illness on individuals, whānau/family, and community, along with the health professional's roles and responsibilities in response.

HLTH7005: Work Placement This practicum course enables students to apply community health knowledge in healthcare settings to enhance the well-being of individuals and families. Working with multidisciplinary teams, they will create culturally aware healthcare plans and research essential skills for ethical and effective health practices.

Further Study

- Postgraduate Diploma in Public Health
- Postgraduate Diploma in Health Science
- Postgraduate Diploma in Health and Social Practice
- Postgraduate Diploma in Health Management

Duration

32 weeks + 7 weeks
study break

+ 160hrs

Work Placement

Credits

120 Credits

Delivery

New Lynn | Hamilton



This programme will also prepare you for further studies in the Healthcare and aged care sector

or

prepare you for the workplace with pay parity starting at **\$29.10** per hour (starting from 1 Jan 2024)

health.govt.nz

Entry Criteria

- An interview and a short statement of intent on why the learner wishes to pursue a Healthcare qualification if asked
- Minimum of Level 5 Diploma in Health or associated field and one-year work experience or a level 6 diploma and above of any discipline
- IELTS academic score of 6.0 with no band less than 5.5 or NZCEL (Academic) Level 4 or equivalent



Study Education at NZSE

TE KURA MĀTAURANGA KŌHUNGAHUNGA

Are you looking for a rewarding career choice that makes an incredible impact in the lives of children, families, and their communities?

Early Education at NZSE prepares you to help young children to reach their full potential, providing wrap-around support for learning, development, and growth. Experience and facilitate the magic of childhood and the joy of those early stages of life every day in this field.

With remote online learning and hours to suit your busy lifestyle, become qualified at NZSE with real-world experiences that enable you to work in early childhood education centres.



“My love for children has motivated me to become an Early Childhood Education teacher. My study at NZSE College helped me learn the necessary skills for my current role.”

Eleele Afoa
ECE Teacher

Further Study

NZ Certificate in Early Childhood Education **L4**

NZ Certificate in Early Childhood Education **L5**

Bachelor's Degree in Teaching (ECE/Secondary)

Graduate Diploma in Teaching Registration with Teaching Council

Industry Partners

As part of the programme, you will experience practical learning in a licensed ECE setting with a registered ECE supervisor to gain great hands-on work experience. These opportunities are the best way to put your knowledge into practice and learn from experienced kaiako.



NZ Diploma in Early Childhood Education & Care

L5

This highly accessible, engaging and creative online programme will give you the required skills and knowledge to become a competent Early Childhood Educator who can work within a range of early childhood contexts providing support and education to infants, toddlers and young children – ultimately enhancing communities and the families that live there.

Through NZSE's ECE diploma programme, you'll further your teaching career by becoming a skilled and sought-after educator. Develop the skills to work with children and ensure their well-being and development in the crucial stages of their upbringing. Our programme covers best practices and theories to apply to your work.

Course Content

There are 8 courses in the Level 5 programme:

ECE5001: Early Childhood Education Theory

In this course, students will examine key historical and contemporary theories and models influencing early childhood education in Aotearoa/New Zealand, with a focus on brain development and evolving views of the 'image of the child.'

ECE5002: Early Childhood Education Curriculum

This course introduces students to Te Whāriki, the New Zealand early childhood curriculum, covering its history, development, and foundational role in education. Students will learn to apply Te Whāriki in their teaching practice, focusing on its bicultural perspective, and will study Tātaiako and the Pasifika Education Plan to support diverse learners in Aotearoa/New Zealand.

ECE5003: Professional Knowledge

This course explores early childhood educators' role as advocates for children, families, and whānau, focusing on te Tiriti o Waitangi, legislation, ethics, UNCROC, and children's rights in inclusive settings.

ECE5004: Professional Practice 1 (including practicum)

In this course, students will examine the role of early childhood educators in Aotearoa/New Zealand, focusing on collegial relationships, regulatory requirements, ethical responsibilities, and reflective practice. They will connect classroom learning with practical experience by working with experienced teachers, children, and whānau, while engaging in reflection and setting personal goals.

ECE5005: Young Children's Learning and Development

This course offers in-depth knowledge of high-quality care and education for infants, toddlers, and young children, incorporating Western and Māori perspectives. It explores the skills needed to work with young children and their families/whānau, focusing on the educator's role in promoting optimal care, growth, and development in a safe, inclusive, and culturally appropriate environment.

ECE5006: Inclusive Practice

In this course, students will explore diversity in early childhood education in Aotearoa/New Zealand, focusing on biculturalism, multiculturalism, and strategies for cross-cultural understanding. Inclusion will be examined through whanaungatanga, manaakitanga, ethnicity, age, gender, and special needs.

ECE5007: Philosophy and Context

This course examines development and the factors influencing learning. Students will review various theories and explore how different contexts impact the learning of infants, toddlers, and young children, integrating perspectives from both Māori and Western traditions into their own emerging philosophy.

ECE5008: Professional Practice 2

This course explores Māori, Western, and cultural theories of child development and their impact on early childhood education. Students will connect classroom learning with placement experiences, working with teachers, infants, and families, while conducting observations and engaging in reflective practice.

Duration

32 weeks + 2 weeks
study break

+ 120hrs

Work Placement

Credits

120 Credits

Delivery

Online

Further Study

- Bachelor's Degree in Teaching (ECE/Secondary)
- Graduate Diploma in Teaching – Registration with Teaching Council

Entry Criteria

- Students enrolling are recommended to hold either NCEA Level 2 or 3 or the New Zealand Certificate in Early Childhood Education and Care (Level 3) or equivalent knowledge, skills and experience
- A compulsory criminal record check
- Two referees (not family or friends)
- An interview and a short statement of intent on why the learner wishes to pursue an Early Childhood Education qualification
- This programme requires students to have access to a laptop/desktop that can connect to the internet with a web browser (Must have access to the internet at home) and a required minimum screen size of 10 inches. For device specifications, please talk to your Course Advisor.
- Work placement can be undertaken in a licensed home-based service, an ECE Centre, a kindergarten, or a language nest.
- **Applicants must have sufficient competence in the English language to undertake this programme, with an IELTS Academic score of 5.5 with no band score lower than 5 or a PTE: Academic score of 42 with no band score lower than 36.**

L5

Learn more, with NZSE.

MICRO-CREDENTIALS

Health

- Anatomy and Physiology for Healthcare (Micro-credential) Level 4
- Dementia Concepts (Micro-credential) Level 4
- Dementia Support (Micro-credential) Level 4

Education

- Conduct and Mark Assessments (Micro-credential) Level 4
- Conduct and Mark Assessments (Micro-credential) Level 5

Tech

- Cybersecurity for Information Technology Operations (Micro-credential) Level 4
- Customer Service in IT (Micro-credential) Level 5
- Intro to IT (Micro-credential) Level 4
- Cybersecurity for Recovery and IT Governance Management (Micro-credential) Level 6
- Azure Cloud Computing for Administrators (Micro-credential) Level 6
- Cybersecurity for Security Analysts (Micro-credential) Level 6
- Cybersecurity for IT Administrators (Micro-credential) Level 6
- Cybersecurity for IT Administrators (Firewall) (Micro-credential) Level 6
- Project Management for IT Practitioners (Micro-credential) Level 6
- Cybersecurity for Risk and Security Management (Micro-credential) Level 7
- Cybersecurity for Penetration Testers (Micro-credential) Level 7

Foundation Studies

- Introduction to Restaurant Hosting and Cashier Operations (Micro-credential) Level 3
- Food Safety (Micro-credential) Level 2
- Bar Management (Micro-credential) Level 4

UPCOMING COURSES

- Graduate Certificate in Health & Wellbeing Level 7
- Post-Graduate Diploma in Health & Wellbeing Level 8

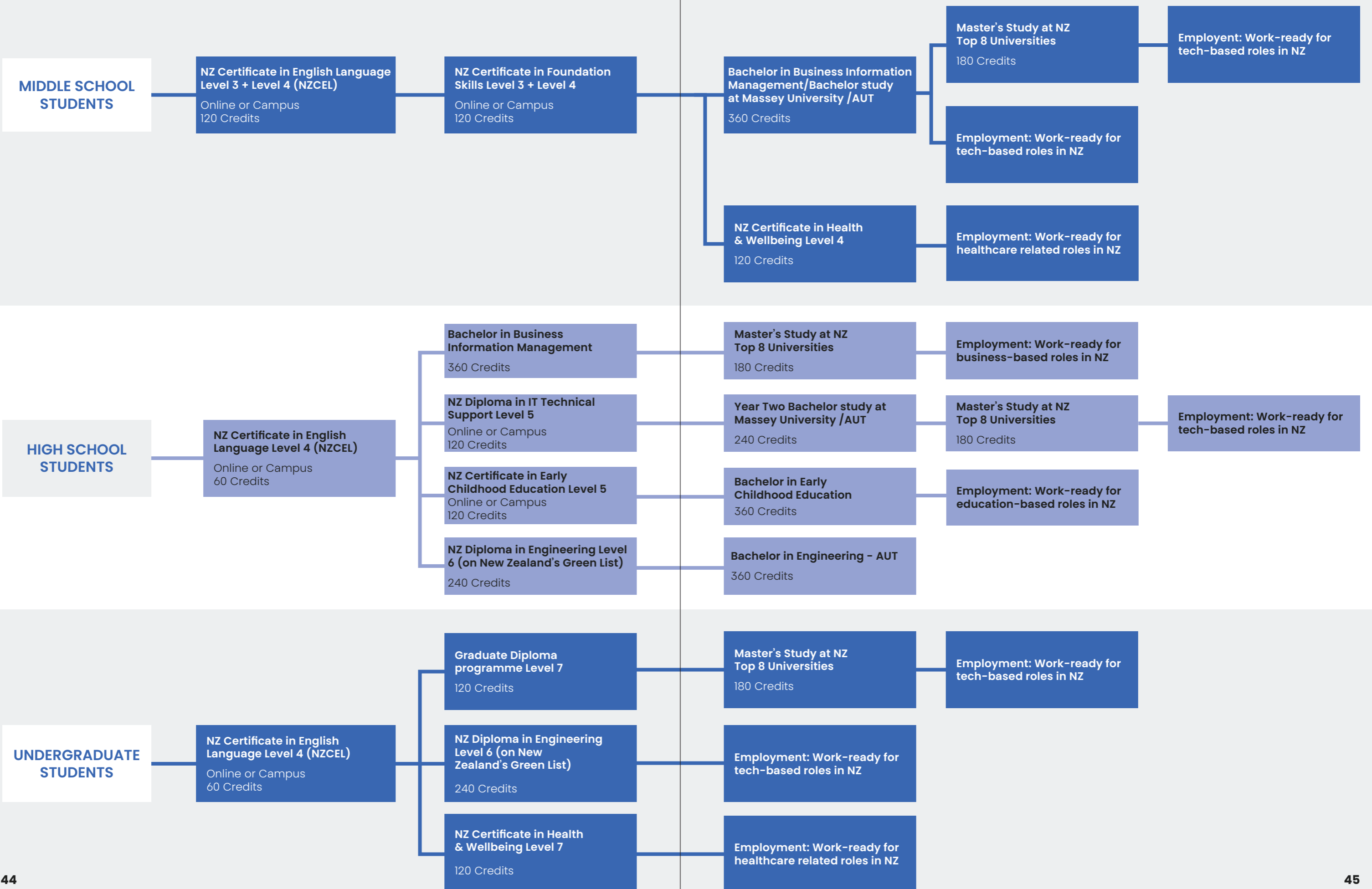
- NZ Diploma in Early Childhood Education and Care Level 5
- Graduate Diploma in Early Childhood Education and Care Level 7
- Graduate Diploma in Education (Secondary) Level 7

- Graduate Diploma in Data Analytics Level 7
- Master of Business Information Level 9



learn,
grow,
succeed.

NZSEG Pathways



Student & Career Support

The holistic well-being of our students is one of NZSEG's highest priorities. We have established policies and practices to ensure the safety and happiness of our community – including a dedicated Learner Success Support Team and the Learner Voice Committees, which are groups composed of student representatives who act as the voice of learners. Our student services are designed to make your transition from your home country as smooth and easy as possible, making NZSEG feel like a home away from home.

How we support you:

- Support staff that offer wraparound care and advice
- Planned activities, including cultural events, field trips, and shared lunches
- Seminars and guest speaker events that provide industry insights to learners
- Innovative facilities with accurate equipment for practical experience
- High-quality and diverse teaching staff who are experts in their fields
- Programmes that are developed in conjunction with industry needs to ensure that they reflect current and future workforce trends
- CV and cover letter workshops that prepare students for job-seeking

Pastoral Care

Embracing the diversity of our students, our friendly and approachable student support team is always available to help you achieve your academic and personal goals, both inside and outside of class.

Pre-Arrival Advice and Information

Leaving home can feel as overwhelming as it feels exciting. For valuable info and advice, visit our website before embarking on your academic journey. Also, by joining our social communities and reading our email newsletters, you will have a smoother transition to higher studies as an international student.

Orientation

While welcoming you, our comprehensive orientation programme is designed to give you essential information so you can navigate your new environment, stay safe and succeed in your academic journey with us in New Zealand.

Social Activities

NZSEG believes it is imperative to celebrate and honour the diverse cultures that make up our student body, which means you'll be invited to cultural events and activities throughout the year. Make life-time friendships with students around the globe within your classroom and around your campus.

Career Services

We support you in unlocking your career potential is one of our biggest aims at NZSE. We do this by helping you navigate your education and career journey through:

- One-on-one career coaching, which includes care and advice for your transition into part-time, full-time or casual employment.
- Targeted employability workshops to fine tune your job-ready skills.
- Connecting both students and graduates with employers and industry for the latest labour market information.

Accommodation and Visa Information

You will need to have your visa organised before you reach New Zealand. Without a valid visa and medical and travel insurance, it is illegal to study in New Zealand. If you do not have valid insurance, you will not be allowed to attend classes. **Please visit immigration.govt.nz for visa information.**

Living costs can vary considerably depending on your lifestyle, however, we recommend you have about NZD 20,000 per year available for living costs, above the cost of your tuition fees as per the criteria set by the immigration policy of New Zealand. **Please visit live-work.immigration.govt.nz/live-in-new-zealand for further financial information.**

Types of Accommodation

The Education (Pastoral Care of Tertiary and International Learners) Code of Practice 2021 requires that students under 18 live in an accommodation approved by NZSEG.

Homestay is a popular option for international students. Students usually have a room with a bed and study desk, laundry facilities, cleaning services, and utilities such as internet. NZSEG can organise a homestay for you and select a host family to provide appropriate accommodation

Apartments or flats are an economical option that are typically shared between two or more flatmates

Apartments and motels can provide temporary accommodation and may cost between NZD 75–250 per night, depending on the location and quality of the facilities

For tenancy information visit tenancy.govt.nz.

How to Apply

Contact Us

Keen to study at NZSEG?

Follow these simple steps to begin your academic journey with us.

If you are interested in studying one of our courses or want to know more, contact us through email or phone and we'll be happy discuss NZSEG's study options with you.

Supply any additional information

The programme you apply for may require additional documentation such as a portfolio (this is discussed in step 1). If this is the case, please supply any additional information necessary.

Submit Application

Once we have organised your course of study, provide your details on the **Student Application Form**. Do this in-person while speaking to one of our team or download a copy from our website and email to: study@nzse.ac.nz or study@seafield.ac.nz

Enrol

If your application is successful, you will receive an offer of study, which outlines the next steps in your journey.



At NZSEG, we have a range of programmes that are available to both international and domestic students.

To view the latest courses we are offering, scan the QR code to be taken to our website. If you have any questions, feel free to contact through any of the options on the right.

Hear from our students...



"NZSE's staff has vast knowledge and experience. The tutors make topics easy to understand through group activities and practical sessions. They inspired me to be a nurse"

Hartaj Singh

Rehab Assistant,
ABI Rehabilitation
Auckland



"I adored my tutor. She broke down the questions and made them easy to understand. My Tutor was always clear and contactable when I wanted to double-check anything or needed guidance."

Jasmine Norling

ECE Teacher,
Nelson



"What you learn at NZSE is solid grounding for everything you're going to need once you start a role in the industry."

Benjamin Ross

Customer Service
& Tech Support
Specialist, Wireless
Nation Auckland



"NZSE's programme gave me insight into hospitality - there's more to it than catering and bartending. The tutors definitely helped me to aspire to carry on."

Moshardanette O'Hara Campbell

Server, SkyCity
Auckland

Call us

+64 9 827 6100
+64 9 369 1906

Email us

study@nzse.ac.nz
study@seafield.ac.nz

Visit us

nzse.ac.nz
seafield.ac.nz

Follow us

[@study_nzse](https://www.facebook.com/study_nzse)
[@study_seafield](https://www.facebook.com/study_seafield)

