

Prospectus

2025/2026



Ara

Institute of Canterbury

Ara rau, taumata rau



ara.ac.nz

Contents

Kia ora Welcome	2	Health and Science	50
Learn with purpose	4	Animal Science	51
Still at school or recently finished?	6	Health Promotion, Nutrition and Exercise	53
Seeking a fresh start or a new direction?	8	Human Services/Social Services	55
Time to sharpen your tools?	10	Laboratory Technology	57
Choosing a subject to study	12	Medical Imaging	59
Levels of study	13	Midwifery	60
		Nursing	61
Starter and Pathway Courses	14	Osteopathy	65
Dual Enrolment	15		
Youth Guarantee	16	Hospitality and Services Industries	66
Supported Learning	17	Dual Enrolment	67
Foundation courses	18	Youth Guarantee	67
Ara Connect	20	Bakery	68
Next Step Centre for Women	21	Cookery	69
Short courses	22	Hospitality and Tourism	70
		Beauty Therapy	72
Business and Digital Technologies	24	Hairdressing & Barbering	74
Business	25	Massage Therapy	76
Digital Technologies	30		
		Language, Education and Sustainability	78
Creative Industries	34	Education	79
Art and Design	35	English	82
Broadcasting	38	Māori Language and Culture	83
Music	39	Sustainability and Outdoor Education	86
Music Theatre	40		
		Trades	90
Engineering and Architecture	42	Dual Enrolment	91
Engineering	43	Foundation Trades	91
Construction Management and		Automotive Trades	92
Quantity Surveying	45	Carpentry and Joinery	94
Architectural Studies	48	Electrical Trades	96
		Engineering Trades	97
		Painting and Decorating	99
		Plumbing, Gasfitting and Drainlaying	100
		Study options at a glance	101
		General Information	102
		Student support and student life	103
		Our campuses	107
		How to apply	110

Disclaimer The information contained in this Prospectus is correct at the time of production (November 2024). Ara reserves the right to cancel or postpone any of the programmes, and shall not be liable for any claim other than the proportion of programme fees that the cancelled portion bears. Some programmes may be dependent upon formal approval from NZQA (New Zealand Qualifications Authority), TEC (Tertiary Education Commission) funding allocation, and the number of enrolments. As part of the NZQA targeted review of all Level 1-6 New Zealand qualifications, there may still be changes to some programmes starting in 2025. Fees, programmes, entry and selection criteria, and dates, are subject to change. Please check the relevant programme pages at ara.ac.nz for up-to-date information and full entry requirements before applying to enrol. Information regarding English language requirements is available on each programme page at ara.ac.nz.



Kia ora | Welcome

Whether you're fresh out of school, seeking a new direction, or just keen to get ahead in the workplace, choosing where to study is a big decision. You want to be sure that your choice suits your learning style and equips you with the skills you need to achieve your goals. You also want to be confident that you'll get the support you require throughout your study journey, and that you'll enjoy the experience of being a student.

At Ara, we're committed to ensuring that you have a positive learning experience and graduate work ready with the skills, knowledge and experience you need to enjoy a successful career, anywhere. In short, your success and wellbeing is our priority.

With campuses across Canterbury, plus more than 150 full-time, part-time, online, blended and distance learning options, we provide as much flexibility as possible to help you fit study around work, family and other commitments.

When you study with us, you'll enjoy a strong sense of belonging within an inclusive, multicultural environment.

You'll never just be a number or a face in a crowd. Your tutors and other Ara staff will get to know you, and because our class sizes are generally small, you'll get to know your classmates too. You'll collaborate with them on projects. You'll also meet students studying other subjects through events and social activities on campus.

During your studies, we'll equip you with the skills employers want and we'll give you work placement opportunities that prepare you for the realities of the job.

We'll also support you throughout your time at Ara, whether you have academic or personal challenges affecting your study, or you need assistance with accommodation, transport, childcare, healthcare, disability support or career guidance.

Ara qualifications are internationally recognised and respected. Once you have yours, the world is your oyster. We know, because our graduates can be found working and making a difference across the globe, as well as throughout Aotearoa New Zealand.

Whatever path you wish to pursue, we'll do whatever we can to help you achieve your goal. We look forward to welcoming you into our friendly and vibrant community soon.

Learn with purpose

Study at Ara and by the time
you graduate you'll be confident,
work ready and equipped to
succeed – wherever life
may take you.



Courses that matter

All our courses are designed in consultation with industry to ensure you learn exactly what you need to know and gain the skills employers want.

'The course focuses on hands-on skills that are relevant to the industry.'

Siyun, Quantity Surveying



Inspiring mentors

Our tutors come from industry; they have years of real-world experience and contacts to share with you. They're committed to your success and will inspire you to achieve your study goals.

'The tutors are amazing – they really bring out the best in you.'

Stevie, Beauty Therapy



Real-life learning

Much of your time at Ara will be spent applying what you're learning to real tasks and projects in environments that mimic real workplaces, to give you valuable experience before you graduate.

'It's been practical right from the get-go.'

Keren, Osteopathy



Work ready when you graduate

All that you do and learn at Ara will ensure that your transition to the workplace is seamless and that you have the confidence and capability to contribute from day one.

'The degree sets you up incredibly well for working in this industry.'

Meg, Sustainability and Outdoor Education



Plus...

You'll be treated as an individual and never just be a face in a crowd. You'll be supported all the way with an extensive array of student services and specialist support staff. You'll enjoy a strong sense of belonging within an inclusive, multicultural environment.

Still at school or recently finished?

Experience Ara events

Dual Enrolment courses

Career advice

Youth Guarantee courses

Fees-free study

Scholarships

Student exchanges

To find out more: engagement@ara.ac.nz

If you're in Year 11, 12 or 13 at school, our extensive range of **Experience Ara** events provides a great way to get a feel for tertiary study. With Experience Ara, you can explore subjects you're interested in with fun, hands-on activities; gain credits towards NCEA with a STAR course; tour our campuses; attend an open day or learn how to submit an application for your study option of choice.

Dual Enrolment courses are another way to experience tertiary study while you're still at school. You spend a day or two a week at Ara, and the rest of the week at school. It's a great opportunity to earn NCEA credits and get a head start in a subject you want to study when you leave school.

Contemplating full-time study at Ara? Our **Careers & Employment** team can help you explore your study and career options and give you career planning advice, all at no cost.



If you're 16-24 years old and not in school, work or any other training, a free **Youth Guarantee** course is the smart way to get ahead. You'll gain foundation skills for employment or further study and you'll be able to make confident decisions about your future. You'll also receive extra pastoral care, transport support and guidance as you transition into work or further tertiary study. Even better, in most cases Youth Guarantee courses don't affect your eligibility for fees-free study at a higher level later on.

Providing you meet the eligibility criteria and complete your course successfully, you could qualify for the government's final year **fees free** offer. If you're not eligible for fees-free study, be sure to check out our wide range of **scholarships** – you could save thousands of dollars in fees.

Got itchy feet? How about combining study and travel with a **student exchange**. We have partnerships with educational institutes around the world, potentially allowing you to complete some of your study while experiencing life in another country.



"It's an amazing campus with excellent facilities and a great atmosphere."

Katie – Engineering Trades

Seeking a fresh start or a new direction?

Career advice

Next Step Centre for Women

Foundation studies

He Toki courses

Pacific Trades Training courses

Fees-free study

Scholarships

To find out more: engagement@ara.ac.nz

Ready to re-enter the workforce after raising the kids? Out of work and needing skills for a new career? Not sure what you want to do next? At Ara we can help you find that fresh start or new direction, and support you to achieve your goals.

If you're contemplating studying with us, our **Careers & Employment** team can help you explore your study and career options and give you career planning advice, for free.

For women, our **Next Step Centre for Women** offers a range of confidence-boosting courses on topics like self-esteem, assertive communication and self-development. Enhance your sense of self-worth, develop your potential and expand your possibilities in a friendly, supportive environment.



We've also got **Foundation Studies** courses designed as stepping stones to further study or a new career. A foundation course could be perfect if you want to gain the entry criteria for a particular course, if you've not been in formal education for a while, or if you're looking for a new direction.

If you're Māori or Pacific, you can take advantage of free trades courses offered at Ara through **He Toki** and **Pacific Trades Training**. As well as gaining sought-after trades skills that can earn you good money, you'll explore your cultural identity and be supported to join the next generation of Māori and Pacific trades leaders.



Providing you meet the eligibility criteria and complete your course successfully, you could qualify for the government's final year **fees free** offer. If you don't qualify, if you don't qualify for fees-free study, be sure to check out our wide range of **scholarships** – getting one could save you thousands of dollars in fees.



"The tutors knew what they were talking about and spoke with tons of knowledge and experience."

Josh – Architectural Studies



Time to sharpen your tools?

Professional development courses

Credit recognition

Adult literacy and numeracy courses

Ara Connect

Short courses

Te Ōhaka

To find out more: upskill@ara.ac.nz



If you're slogging it out in a job you don't really like, being overlooked for promotion, or feeling like you've been left behind by technology, now's the time to gain new skills that can open the door to exciting new opportunities.

As well as the more than 150 qualifications listed in this study guide, we offer a range of **professional development courses** that you can study while you work. If you're working, your employer might support you to do one of these courses, and may even pay your fees. Our professional development courses range from conflict management and customer service through to beginner te reo and effective communication.

We've also got lots of part-time, **short courses** that are great if you want to improve your work skills, pursue a passion or discover a new interest. You can learn about food safety or how to make your own furniture, get an introduction to welding, become an expert barista and lots more.



Are you one of the legions of hard workers out there with extensive workplace experience but no qualification to show for it? At our Centre for Assessment of Prior Learning, you can get **credit recognition** for your experience which you can then put towards a formal qualification like a certificate, diploma or degree. This confidence-boosting process can improve both your career opportunities and your earning potential.

If it's the basics that are holding you back, we have free **adult literacy and numeracy courses** to improve your reading, writing and maths for work and everyday life. We can also help you become confident in the digital world with free courses in common computer programs like Word, Excel, PowerPoint, email and the internet. These courses are available through our **Ara Connect** community hubs (in Christchurch and Timaru) and you can study at your own pace.

Got a great idea for a new business or product, but not sure how to get it off the ground? **Te Ōhaka** is a partnership between Ara and the Ministry of Awesome. Established to foster growth and innovation, Te Ōhaka can provide you with free entrepreneurial support, mentorship and resources to help give your idea the best chance of success.



"The welcoming atmosphere at Ara made me feel instantly connected and supported."

Semaema – Applied Science

Choosing a subject to study

Explore your study options by identifying the areas that best match your interests and personality.

You're a creative thinker with the ability to innovate, engage and inspire.

Check out our courses in:

- Architectural studies
- Art and design
- Business
- Broadcasting and media
- Digital technologies
- Performing arts/music

You like technology and enjoy working with systems and processes.

Check out our courses in:

- Digital technologies
- Engineering
- Laboratory science

You're interested in personal development through language, culture and knowledge.

Check out our courses in:

- Early childhood education
- English language
- Māori language and culture
- Sustainability and outdoor education
- Teacher education

You're interested in how things work, solving problems and nurturing animals and the environment.

Check out our courses in:

- Animal science
- Laboratory science
- Sustainability

You're highly motivated and organised and you have a strong analytical ability.

Check out our courses in:

- Business
- Digital technologies

You're interested in the health and wellbeing of others and you're empathetic by nature.

Check out our courses in:

- Animal science
- Early childhood education
- Health promotion, nutrition and exercise
- Human services
- Medical imaging
- Midwifery
- Nursing
- Osteopathy
- Teacher education

You're customer focused with a desire to deliver great products, services and experiences.

Check out our courses in:

- Business
- Cookery and bakery
- Hair and beauty
- Hospitality
- Massage therapy

You're interested in solving problems in practical ways and changing the way we live.

Check out our courses in:

- Architectural studies
- Business
- Engineering
- Health promotion, nutrition and exercise
- Laboratory science

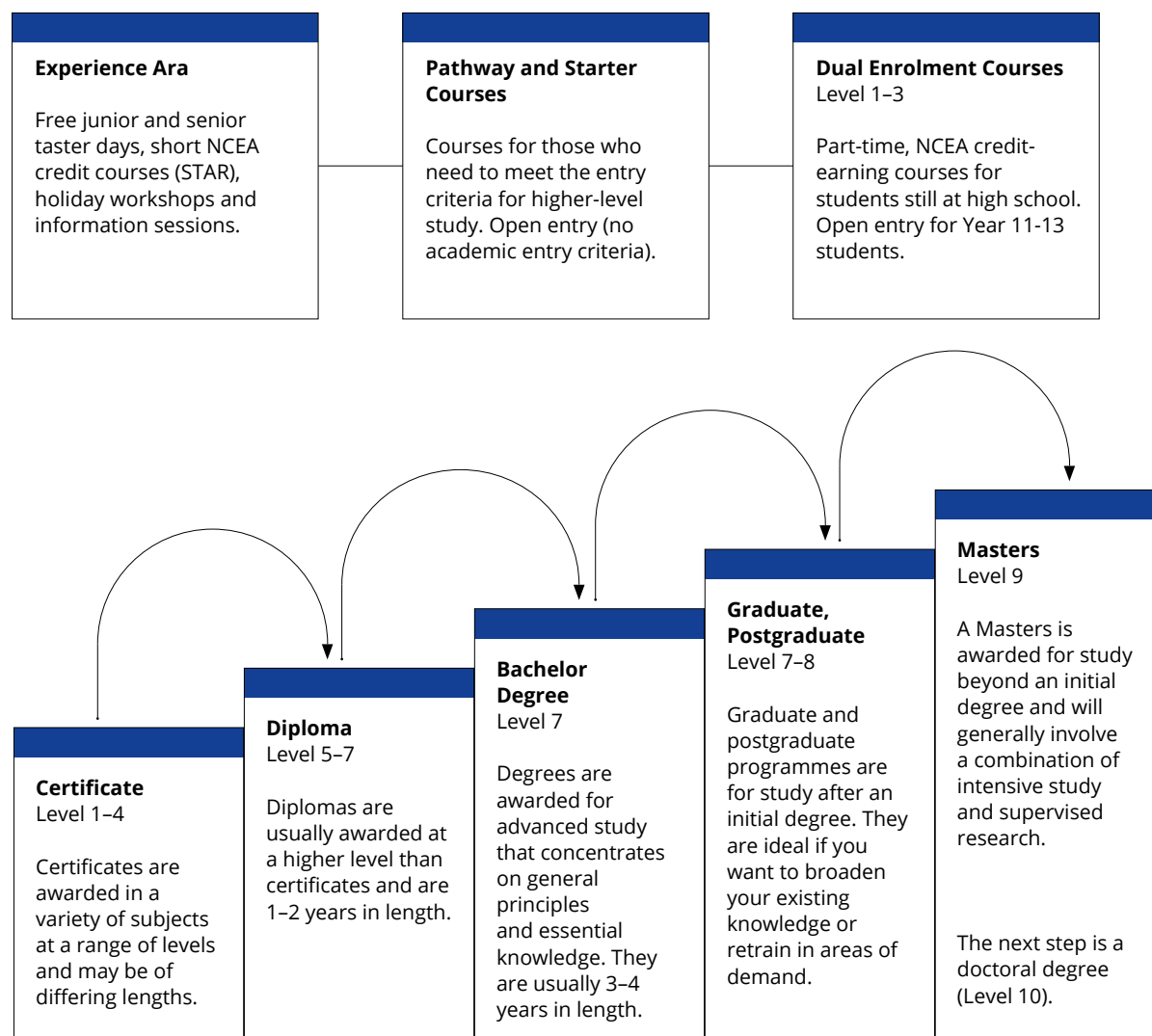
You're very practical, you enjoy hands-on work and you can solve problems in a logical way.

Check out our courses in:

- Engineering
- Laboratory science
- Trades

Levels of study

Our focus is on flexible study options. That's why we've created various ways for you to gain qualifications and advance your training. There are a variety of levels for you to study, depending on where you want your career to lead you. You might start at an entry level foundation course, or launch straight into a degree.



"With the smaller classes, you get a lot more one-on-one time."

Jack, Interior Design



Starter and Pathway Courses

Ara whakuru me
ngā Ara whakapiki



Dual Enrolment

Learn with us while you're still at school.

If you're in Years 11 to 13 at secondary school, Dual Enrolment courses are a way to experience tertiary study while still at school. You spend a day or two at Ara and the rest of the week at school. It's a great opportunity to earn NCEA credits and get a head start in a subject you want to study when you leave school.



Scan to learn more about our Dual Enrolment courses

Dual Enrolment



Level 1 – 3



Christchurch, Timaru, Oamaru



Part-time: one year



February



We offer the following Dual Enrolment courses:

Business & Digital Technology

- Business Administration & Technology Level 3 (2-day)

Creative Arts

- Digital Design Level 2 (1-day)

Education and Sustainability

- Sustainability and Outdoor Education Level 3 (1-day, UE approved subject)

Food and Hospitality

- Bakery Level 3 (2-day)
- Cookery Level 3 (2-day)
- Cookery and Restaurant Service Skills Level 3 (1-day)
- Hospitality, Cookery & Beverage Level 2 (2-day) (*Chch and Oamaru only*)
- Hospitality Supported Learning Level 1 (1day)

Hair and Beauty

- Beauty Therapy and Hairdressing
- Hairdressing and Beauty Therapy Level 3 (*Timaru only*)
- Introduction to Beauty Therapy Level 2 (1-day)
- Introduction to Barbering Level 2 (1-day)
- Salon Skills Level 2

Trades

- Carpentry Level 3 (2-day)
- Introduction to Agricultural Engineering Level 2 (1-day) (*Timaru only*)
- Introduction to Automotive Level 2 (1-day)
- Introduction to Automotive and Autobody Level 2 (2-day)
- Introduction to Construction Trades Level 2 (1 and 2-day)
- Introduction to Electrical Engineering Level 2 (2-day)
- Introduction to Engineering Trades Level 2 (1-day)
- Introduction to Plumbing Level 2 (2-day)

Visit ara.ac.nz for all entry requirements and fee information.

Youth Guarantee

Discover your path with a free course.

If you're aged between 16 and 24 and not in school, employment or any other training, a Youth Guarantee course is the smart way to get ahead. Free and available in a wide range of subjects, these courses set you up with great foundation skills for employment or further study, and enable you to make confident decisions about your future.



Scan to learn more about our Youth Guarantee courses

Youth Guarantee



Level 2 – 3



Christchurch, Timaru*



Full-time: six months



February, July*

**Not all courses are available at both locations, or in both semesters. Please contact us for exact details.*

We currently offer these Youth Guarantee courses:

Hospitality & Service Industries

- New Zealand Certificate in Salon Skills (Introductory) Level 2
- New Zealand Certificate in Hairdressing (Salon Support) Level 3

Trades

- Trades Primer Level 2



EX- PERI- ENCE ARA

Get a feel for tertiary level study, explore an industry you're interested in or just try something new.

Experience Ara gives you the chance to do all of that and more, with taster days, short courses, holiday programmes, information sessions and lots of other cool stuff for students in Years 9-13.

Check out what's on offer at:
ara.ac.nz/exp

Supported Learning

Prepare for study, employment and independent living.

New Zealand Certificate in Skills for Living (for Supported Learners)



Level 1



Christchurch



Full-time: one year



February

Gain skills to assist you to be a productive citizen of Aotearoa.

As well as learning how to self-manage your participation in social, cultural, family/whānau and community situations, this course will support you to seek further skills and knowledge to improve your educational and employment pathway. Once you've completed the four core courses in the first year, you can return for another six months to study two additional courses which will give you specific skills for the workplace.



Skills for Working



Level 1



Christchurch



Full-time: six months



February

Prepare to enter the workforce with confidence.

This programme is designed as a follow-on from the Skills for Living certificate. It has two courses - Getting and Keeping a Job and On the Job Experience - which will prepare you to find meaningful work in the community.

Preparation for Study for Supported Learners



Level 1



Christchurch



Part-time: 10 weeks per course



February, May, July, October

Add to your skillset with a part-time supported learning course.

This programme is designed to ease your transition from secondary school to a tertiary education environment. It comprises four courses: Communicating with Others, Keeping Yourself Safe, Emotions and Life Lessons, and Preparing for Independence.

Visit ara.ac.nz for all entry requirements and fee information.



Level



Location



Duration



Starts

Foundation courses

Give yourself the best start for further study or your next step in life.

Trades Primer



Level 2



Christchurch, Timaru



Full-time: 19 weeks



Feb*, July

This free course is a great way to experience a variety of trades so you can make an informed decision about your next step.

It covers machining, fabrication, welding, automotive, autobody, carpentry, joinery, painting and decorating, electrical, plumbing, gas fitting and drain laying. You'll learn about each of these trades and participate in hands-on activities. You'll also gain foundation skills – including literacy, numeracy and communication – that will support you into further study or the workplace.

By completing this programme you'll gain Ara credits which you can use towards further tertiary study in New Zealand.

**Christchurch only*



New Zealand Certificate in Study and Employment Pathways



Level 3 and Level 4



Christchurch, Timaru*



Full-time: 19 weeks
Part-time: available



February**, July

Get ready for higher-level study in your chosen subject area.

If you don't meet the entry requirements for a diploma or degree, or if you want to improve your academic skills before moving on to higher-level study, this qualification is the perfect solution. It's available in a range of pathways to ensure you meet specific entry requirements for your chosen degree or diploma, and it'll give you the academic skills and confidence you need to take that next step in your learning journey.

Level 3 specific pathway options:

- Health and Science – animal management, veterinary nursing, enrolled nursing exercise
- Construction Management, Architecture and ICT
- Engineering
- Open – health and wellbeing (social and community services), music, performing arts, outdoor and adventure education

Level 4 specific pathway options:

- Pre-Health – nursing, midwifery, medical imaging, musculoskeletal health, human nutrition, sport and exercise science and health promotion
- Construction and ICT
- Engineering
- Open – architectural studies, applied management, broadcasting communications, social work, sustainability and outdoor education, architectural technology

* Only the Pre-Health option is available in Timaru

** Level 3 Timaru only

Reading and Writing for Adult Learners



Level 1



Christchurch



Day class: 9 weeks
Night class: 17 weeks (excluding term break)



Various

Improve your reading, writing and spelling for employment or further study.

If you or someone you know struggles with reading and writing, this course can really help. It covers reading for enjoyment and purpose, writing basic sentences, learning new ways to spell correctly and how to recognise basic spelling errors.



Create an awesome life for you and your whānau

Our free He Toki Māori or Pacific Trades Training courses are designed to lead to apprenticeships and job opportunities. You'll grow your understanding of your culture while gaining in-demand skills for employment, and you'll receive wrap-around support to ensure you succeed.

Find out more at ara.ac.nz
or call 0800 24 24 76

Visit ara.ac.nz for all entry requirements and fee information.



Level



Location



Duration



Starts

Ara Connect

Grow your computing skills for free.

Our free Ara Connect courses are a great way to build your digital capability for work, study and everyday life. At locations around Christchurch and Canterbury, you can learn how to use devices like smart phones and tablets, and gain skills in common software programs. Plus, you can study at your own pace and fit your learning around work, family and other commitments.

Courses include:

- Access for Beginners
- Access Enhanced
- Becoming a Digital Citizen
- Digital Basics
- Excel for Beginners
- Excel Enhanced
- Google Apps – Tips and Tricks
- Google for the Office
- Google Sites
- Keyboarding
- New Zealand Certificate in Computing
- PowerPoint for Beginners
- Publisher for Beginners
- Word for Beginners
- Word Enhanced



Next Step Centre for Women

Grow your sense of self-worth and expand your possibilities.

Our Next Step Centre for Women provides a friendly, warm and supportive environment where you can learn new skills and develop your potential. Our courses will assist you to know yourself better, explore your options, update your skills and develop confidence in yourself.

Courses include:

- Assertive Communication and Confidence
- Career Skills
- Effective Anger Management
- New Outlook for Women
- Self Development
- Self Empowerment
- Self Esteem
- Updating Skills*

**Contributes credits towards the New Zealand Certificate in Foundation Skills (Career and Education)*



"Although it was a diverse mix of women, we came together to laugh, cry and debate as one. It was a place where new friendships were forged. Not only did I get to hear about the hardships of others, I was able to feed off their strength, encouragement and support to continue this journey on which I had embarked."

Leisha, Next Step Centre for Women



Short courses

Add to your personal or professional toolkit.

We offer part-time short courses and workshops in a variety of subjects for personal interest or professional development. These range from hobby courses through to micro-credentials required for professional accreditation.

Here's a sample of the short courses we offer:

- Analytical Chemistry
- Barista Essentials
- Business Accelerator
- Conflict Resolution
- Electrical Inspector and Service Technician Registration
- Hobby Furniture Making
- Innovation Accelerator
- Intensive English
- Liquor Licence Controller Qualification
- Midwifery Professional Development
- Quality Assurance
- Samoan Language
- Te Reo Māori
- Weekend Panelbeating
- Welding



To learn more about our starter and pathway options, call 0800 24 24 76.





Get ahead, the smart way

Youth Guarantee programmes are the smart way for eligible 16- to 24-year-olds to get into employment or further study, for free!

Find out more on page 16

Business & Digital Technologies

Te Hoe Hōkai Pakihi



Business

Equip yourself with the skills needed to thrive in business.

The business world can lead you in many directions - from administration support roles to management and specialties like accounting, human resources, sales and marketing, change management and business transformation. We have business programmes from foundation studies right through to graduate diplomas to equip you with the skills you need to succeed in whatever enterprise you find yourself involved with.

When you study business with us, you'll learn from tutors and highly regarded local companies who have extensive knowledge and experience to share. You may also have opportunities to gain real-world experience to further enhance your capabilities.



Scan to learn more about our Business courses



Still at school?

Check out our Dual Enrolment business study options on page 15



Pathway into business

Check out our Study and Employment Pathways programme on page 18



You might also be interested in ...

Postgraduate Certificate in Professional Supervision on page 56
Master of Sustainable Practice on page 89



New Zealand Certificate in Business (Administration and Technology) (Level 3)



Level 3



Christchurch



Full-time: 17 weeks
Part-time: up to four years



February, July

Gain skills to become a competent business administrator.

On this programme you'll learn how to provide administrative and general office services while using today's modern technology to support everyday operational activities. You'll learn how to select and apply customer service techniques to your role and apply effective problem solving and decision-making.

This programme is specifically targeted to cover a range of administrative techniques including Office 365 suite, customer relations, time management, professional and ethical behaviour, digital marketing tools, processing data, financial calculations, business information and emerging technologies.

It will set you up for a role as an entry level administrator or you can continue to refine your skills and learn more about specialist document production and specialist systems with the Level 4 programme.

Visit ara.ac.nz for all entry requirements and fee information.

New Zealand Certificate in Business (Administration and Technology) (Level 4)



Level 4



Christchurch



Full-time: 17 weeks

Part-time: up to four years



July

Take a leading role in office administration.

The skills you gain on this programme will enable you to provide quality administrative services to meet the needs of a business entity. In addition to learning how to use MYOB® accounting software and other business technologies, you'll learn how to perform financial calculations, process data, produce information for business purposes, maintain administrative systems and processes, and make recommendations for improvements.

You'll also learn how to communicate effectively with stakeholders, work collaboratively to contribute to the achievement of team objectives, select and apply customer service techniques, comply with policies and legislation, and consistently meet expectations.

New Zealand Diploma in Business



Level 5



Christchurch, online



Full-time: one year

Part-time: up to five years



February, July

Equip yourself to work in a wide range of business-related roles in any sector.

This highly flexible programme is available in six specialisations: accounting; administration and technology; human resource management; leadership and management; marketing and sales; project management. It can be studied either part-time or full-time and can pathway into a Bachelor of Applied Management (requiring just two years additional full-time study).

You'll develop skills and knowledge through a variety of general and specialised business topics. These include organisational structures and identities, business analysis and evaluation, innovation, HR, marketing, accounting and management. Throughout, you'll gain the ability to problem solve, think critically, communicate effectively and work independently in a range of operational roles.



Level



Location



Duration



Starts

New Zealand Diploma in Primary Industry Business Management



Level 5



Online*



Part-time: up to four years



February, April, July, October

Gain valuable skills to apply to the agricultural business you work in.

This programme is designed so that everything you learn can be applied to the business you work in, as you learn. You'll gain skills and knowledge that will increase your confidence to make sound business decisions, ensure your team is productive and engaged, and improve your bottom line.

The diploma covers management and planning in four key areas: finance, business, staffing and sustainability. You'll learn about: employment obligations and responsibilities; human resource issues and strategies for good workplace relationships; budgets and cash flow forecasts; GST and PAYE; evaluating opportunities for future performance. You'll also learn about concepts of asset management, transfer and succession; analysing environmental management practices and addressing shortcomings; ensuring long-term viability and sustainability.

**Real time classes via Zoom*

Bachelor of Accounting



Level 7



Christchurch



Full-time: three years
Part-time: up to 10 years



February, July

Become an accounting professional.

Becoming an accountant will open doors for you across the globe. Our graduates are known not only for being highly skilled, but also for being able to hit the ground running.

Through active and applied learning in small classes, you'll learn skills and knowledge in a range of accounting topics such as accounting systems and processes; taxation; finance and financial management; economics; accounting information systems; quantitative methods for accounting; audit and assurance; management accounting; financial accounting and reporting; business law.

Alongside these accounting areas, you'll also cover core business topics enabling you to develop comprehensive professional accounting skills, knowledge and capabilities, while an elective will enable you to focus on another topic of interest in business.

In your final year you'll undertake a professional accounting project which involves applying your learning within a real business environment. You'll undertake a deep-dive project into a specialist area of accounting and on successful completion you'll have real-life work experience to add to your CV.



Visit ara.ac.nz for all entry requirements and fee information.



Level



Location



Duration



Starts



Bachelor of Applied Management



Level 7



Christchurch



Full-time: three years
Part-time: up to 10 years



February, July

Gain widely applicable skills to make your mark in business.

This flexible degree will prepare you to succeed in business by equipping you with widely applicable, real-world knowledge and skills. You'll develop your ability to think critically and strategically and gain valuable skills in your chosen specialty.

Specialisations include: Accounting; Business Information Systems; Business Transformation and Change; Event Management; Hospitality Management; Human Resources; Innovation and Entrepreneurship; Marketing and Sales; Operations and Production Management; Project Management; Strategic Management; Supply Chain Logistics; Tourism Management.

In your first year you'll develop a depth of business knowledge and skills required for any business context. This includes skills in management, leadership, accounting, marketing, HR, law, economics and sustainability, as well as knowledge of Te Tiriti o Waitangi.

Then in your second year, you'll choose a specialisation to suit your desired pathway and begin building expertise in this area. Your final year of studies will involve more complex critical and strategic thinking skills. You'll also undertake a work placement where you'll apply your specialist skills to complete a research-informed project that solves a business problem.

Graduate Certificate in Business Management



Level 7



Christchurch



Part-time: up to three years



February, July

Excel as a business specialist.

This course is designed to equip you with valuable specialist business skills in an area of your choosing. Options include project management, event management, business development, entrepreneurship, innovation, supply chain management, marketing, human resource management, business information systems and business transformation and change.

Perfect as professional development, the course will develop your critical and strategic thinking skills and prepare you to adapt and lead in ever-changing business environments.

You'll undertake a supervised industry-based project during which you'll develop new ways to approach familiar or future business problems, using existing models of enquiry and innovation. Where appropriate, this project – and your other study – can be integrated into your current work environment.



Level



Location



Duration



Starts

Graduate Diplomas in Business



Level 7



Christchurch



Full-time: one year
Part-time: up to four years



February, July

Take your career to the next level with advanced business skills.

If you're seeking to advance your career in business with a higher qualification, our graduate diplomas offer the perfect professional development opportunity. They're available in a wide range of business subjects and designed to give you specialist expertise that can take your career to the next level.

You'll learn in applied and active small classes that provide the opportunity to ask questions and engage with others. You'll also be supported to undertake a practical project which can be integrated into your current work if appropriate. Upon completion of your graduate diploma, you'll possess comprehensive skills and knowledge to support effectiveness in your chosen specialist area.



SPECIALISATIONS:

Graduate Diploma in Accounting

Complement your degree with accountancy skills and experience applicable to many business situations and commercial pursuits.

Graduate Diploma in Applied Management

Advance your career in management by tailoring this qualification to meet your specific needs.

Graduate Diploma in Business Information Systems

Acquire the skills and knowledge to keep up with the latest innovative business systems and advances in technology.

Graduate Diploma in Business Transformation and Change

Learn how to guide companies through transformation required to address commercial challenges and opportunities.

Graduate Diploma in Event Management

Develop a high degree of event management finesse and nurture your talent to advance your career in a dynamic industry.

Graduate Diploma in Human Resource Management

Learn how to foster smooth employee/employer relations and gain essential skills for maintaining a satisfied and effective workforce.

Graduate Diploma in Innovation and Entrepreneurship

Gain the specialist skills and knowledge needed to innovate and succeed in the business world.

Graduate Diploma in Operations and Production Management

Advance your understanding of the procedures required to ensure production functions at optimum levels.

Graduate Diploma in Project Management

Combine your big picture thinking and attention to detail with project management skills that are in demand around the world.

Graduate Diploma in Marketing and Sales

Gain an advanced understanding of the art of successful selling in today's competitive marketplace.

Graduate Diploma in Strategic Management

Equip yourself to improve organisational effectiveness in a range of business environments.

Graduate Diploma in Supply Chain Logistics

Acquire the ability to make sound strategic decisions and solve problems in supply chain logistics.

More information on each programme is available on our website.

Visit ara.ac.nz for all entry requirements and fee information.



Level



Location



Duration



Starts

Digital Technologies

Learn how to create, manage and use technology to shape our everyday lives.

Demand for people with digital technology skills and expertise is strong around the globe: it's one of the top five highest paying industries and it offers near limitless opportunities for innovation. In addition to paying well, many employers provide highly desirable employee conditions and benefits.

We'll help you establish and grow your skills in digital technologies towards a strong future in this exciting field. Our programmes and courses have been developed in conjunction with industry to ensure they're up to date and relevant. They also cross credit easily into each other, providing options and pathways to gain qualifications.



Scan to learn more about our Digital Technologies courses



Pathway into digital technologies

Check out our Study and Employment Pathways programme on page 18 and the free computing courses at Ara Connect on page 20



New Zealand Certificate in Information Technology Essentials



Level 4



Christchurch, online



Full-time: six months
Part-time: available



February, July

Prepare for a career in IT by gaining a broad range of computing skills.

This programme covers a wide range of computing topics at an introductory level. These include hardware, operating systems, networking and security, user experience, website design and development, information systems, and software design and development.

You'll also gain knowledge of professional, ethical and legal principles and practices, and develop your communication skills.

This course is free to eligible applicants via He Toki Māori Trades Training/Pacific Trades Training.



Level



Location



Duration



Starts

New Zealand Diploma in Information Technology (Technical Support)



Level 5



Christchurch



Full-time: one year
Part-time: up to three years



February, July

Develop a broad range of technical support and networking skills.

A wide range of topics and skills are covered in this programme. They include: installation, configuration and administration of hardware and software systems; networking and associated services and technologies; security; database management; problem solving; IT service management; web and software design; and development. You'll also enhance your knowledge of professional, ethical and legal principles and practices, and develop your communication and interpersonal skills.

This course is free to eligible applicants via He Toki Māori Trades Training/Pacific Trades Training.

New Zealand Diploma in Web Development and Design



Level 5



Christchurch



Full-time: one year
Part-time: up to three years



February, July

Master the technical and creative skills required to plan, develop and maintain websites.

If you're keen to get into web development and design, this programme will equip you with knowledge and skills in a range of areas including: determining client requirements; using frameworks and libraries; user experience design; programming concepts, applications and implementation; configuration; publishing and testing of web solutions.

In addition, it covers skills in IT technical support for managing hardware and software resources. You'll also enhance your knowledge of professional, ethical and legal principles and practices, and develop your communication and interpersonal skills.

New Zealand Diploma in Cybersecurity



Level 6



Christchurch



Full-time: one year
Part-time: up to three years



February, July

Get the specialist IT skills needed to protect business data and intelligence.

As exposure to risks around the confidentiality of business data and intelligence grows, cyber security professionals are increasingly in demand.

This qualification is a leader of its kind in the country. It covers topics such as infrastructure, the basics of cybersecurity, methodology specifics, tools, technologies (such as cryptography), technical cybersecurity management, governance and standards.

In addition, the course will develop your critical technical and analytical skills and enhance your attention to detail. You'll learn via classroom tutorials, online discussions and a work-integrated learning project which may involve an industry placement.



Visit ara.ac.nz for all entry requirements and fee information.



Level



Location



Duration



Starts

Bachelor of Information and Communication Technologies



Level 7



Christchurch



Full-time: three years
Part-time: up to five years



February, July

Advance your existing IT skills and broaden your opportunities in this fast-evolving field.

Practical skills and work readiness are key components of this degree which is available in three specialties: Information Systems, Software Development, and Networking and Infrastructure – and has a strong emphasis on practical skills and work readiness.

The first year covers a broad range of topics that will provide you with a solid base of knowledge in software engineering (programming), hardware and networking, website development, IT tools and concepts, and mathematics skills relevant to IT.

In years two and three you'll choose one of the three specialist pathways and develop in-depth knowledge of your chosen area. You'll also develop skills in problem solving, critical thinking, analysis, teamwork, project management, time management, self-reliance and communication skills.

In the final semester you'll put all of your acquired skills and knowledge into practice in a 45-credit capstone project (in most cases for a local business). The project is an excellent opportunity to equip yourself with real-world IT experience and to learn from industry people. It also results in a substantial piece of work with which to demonstrate your potential to prospective employers.



Graduate Diploma in Information and Communication Technologies



Level 7



Christchurch



Full-time: one year
Part-time: available



February, July

Add to your existing degree and open doors to working in innovative ICT settings.

This graduate diploma is designed to meet the needs of graduates from a variety of disciplines who don't possess the specific skills necessary to work in ICT industries but have demonstrated the ability to perform at a significant academic level.

It offers courses from a wide range of ICT related disciplines—including analysis, design, development, implementation and maintenance of business information systems—and allows you to specialise in front-end programming, information systems, web or software development, network administration or cybersecurity.

You'll follow a study path that considers your prior knowledge and the ICT area you wish to specialise in.





Become digital savvy for free

Growing your digital skills is easy and free at Ara Connect. Study at your own pace and fit your learning around work, family and other commitments.

Find out more on page 20



"I enjoy the practical experiences the programme includes."

Pornpitcha, Information and Communication Technologies

Visit ara.ac.nz for all entry requirements and fee information.

Creative Industries

Te Hoe Toi



Art & Design

Channel your creative thinking into a rewarding career.

Design skills are essential for New Zealand's economic and cultural future. Our highly practical art and design programmes will give you the skills and knowledge needed to build a career in the creative industries.

You'll engage in hands-on learning led by expert tutors in small classes. Your studies will equip you to pursue a career in a swiftly evolving environment and reshape thinking of what's possible in the creative work context. Our graduates are at the forefront of these shifts – leading the drive to solve real-world problems through the creative and critical thinking skills they develop with us.



Scan to learn more about our
Art & Design courses

New Zealand Certificate in Creativity



Level 4



Christchurch, Timaru



Full-time: six months
Part-time: up to three years



February, July*

Gain foundational hands-on experience for employment or further studies in the creative industries.

Designed as an introduction to creative thinking, this programme will prepare you for further tertiary study and give you transferable skills necessary across many industries.

You'll be given opportunities to develop strategies in problem solving, idea generation and visual and oral communication. You'll also be introduced to a variety of creative media and tools to explore solutions to real-world problems.

**July start is available in Christchurch only.*



Still at school?

Check out our Dual Enrolment creative study options on page 15



New Zealand Certificate in Digital Media and Design



Level 4



Christchurch, Timaru



Full-time: six months
Part-time: up to three years



February, July

Prepare for employment or further study in the creative industries by gaining foundational digital experience.

This programme is designed to give you experience in producing creative and effective outcomes using current digital technology.

You'll learn how to apply creative theory to practical, real-world projects, and have the opportunity to explore your own interests through research and practical application in design and creative contexts.

Visit ara.ac.nz for all entry requirements and fee information.



Level



Location



Duration



Starts

New Zealand Certificate in Fashion



Level 4



Christchurch



Full-time: six months



February, July

Learn the skills needed to meet fashion industry expectations and explore your design aspirations.

If you're keen to work in the fashion industry, or to undertake further study, this certificate provides the perfect pathway.

We'll introduce you to a range of textiles and the basic skills of fashion design, and you'll gain entry-level skills in pattern making and garment construction. We'll also explain how the industry works and explore various types of workplaces.

At the end of the course, you'll be able to make a range of basic garments and apply your skills in a garment production workshop, under the direction of a designer or production manager.

New Zealand Diploma in Arts and Design



Level 5



Timaru



Full-time: one year



February

Enhance your skills to establish yourself as a creative professional.

With this diploma you'll develop core skills in problem solving and idea generation in a range of methods and materials. You'll also become familiar with using digital technology for creative work.

This diploma is the ideal pathway to the Bachelor of Design where you can further refine your skill for a career.



Bachelor of Design



Level 7



Christchurch



Full-time: three years



February

Refine your artistic talents and critical thinking skills to become a versatile creative professional.

Design is about thinking, solving problems and telling stories. Our Bachelor of Design – available in Visual Communication Design, Applied Visual Art and Fashion specialisations – will teach you how to master these skills so you can transform your ideas into reality.

Initially the focus is learning the foundational principles of design and about the different methods used to drive creative design processes. You'll then have opportunities to use your own experiences to identify problems and develop real-world solutions for them, though the use of various methods and mediums.

Postgraduate Diploma in Creative Practice



Level 8



Christchurch



Full-time: one year



February

Take your professional creative career to a new level.

This programme has been designed for musicians, dramatists, performing and visual artists, designers, film makers, writers, directors and other professional creatives who wish to take their first foray into postgraduate study. It will enable you to advance your creative practice and develop knowledge and specialist skills, beyond those gained through your undergraduate degree.

As a student of this programme, you'll have the opportunity to use reflection on creative and critical theory to initiate and develop an area of interest into a supervised research project within a domain of practice. You'll also develop and apply advanced knowledge of theories and worldviews, including Te Ao Māori, in relation to a domain of research and creative practice.

Master of Creative Practice



Level 9



Christchurch



Full-time: 18 months



February

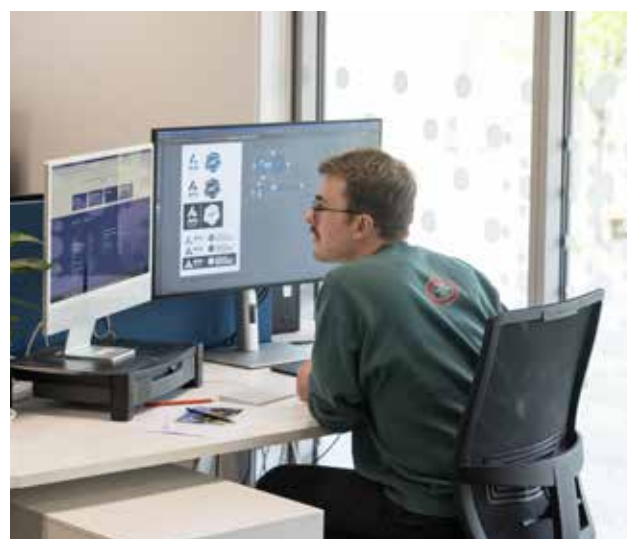
Gain a qualification that recognises you as a leader in creative practice.

The Master of Creative Practice is applicable to creatives such as musicians, dramatists, performing and visual artists, designers, film makers, writers, directors or any professional engaged in creative pursuits.

If you're a graduate with experience working in the creative community and you'd like to become a leader in creative practice, this is the perfect way to establish your credentials in your chosen domain. The programme may also suit you if you don't have extensive experience, but you've demonstrated academic and creative success at graduate or undergraduate level.

The Master of Creative Practice is designed to engage you in understanding, investigation and intervention within your chosen domain in academic or professional contexts. It will give you the opportunity to critically reflect on your practice through theory, and to further develop the practice into a more substantial and fully independent research-based thesis.

You'll be enabled to extend your domain of creative practice through enacting an advanced, sustained and sophisticated body of independent, original, practice-based research, which conforms to internationally recognised standards. You'll also be equipped with the skills and knowledge to extend your domain of practice through the undertaking of independent original research.



Visit ara.ac.nz for all entry requirements and fee information.

Broadcasting

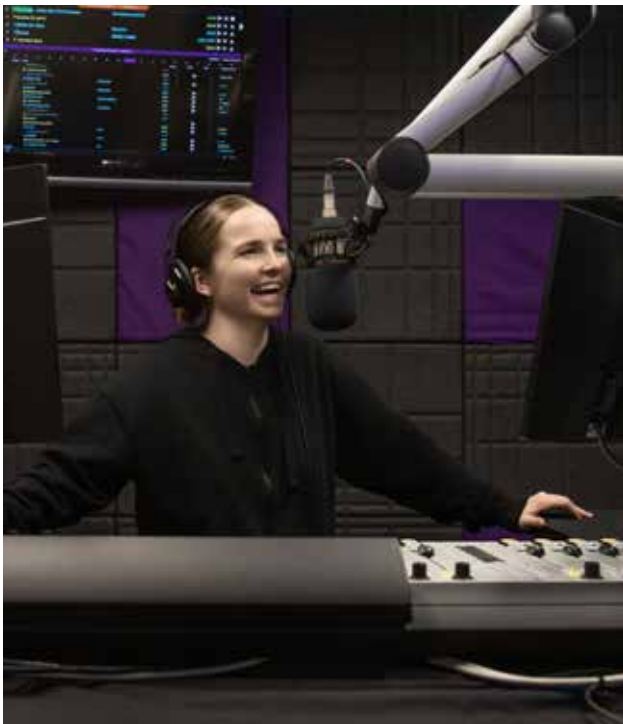
Give yourself the best start to a career on screen, on air or in journalism.

Consumption of news, entertainment and social content has never been greater. If you aspire to work in front of the mic or camera, or behind the scenes, the New Zealand Broadcasting School (NZBS) at Ara is the place to study. It's recognised as the premier national provider of applied education in broadcast journalism, television, film, digital media and radio performance and production in New Zealand.

Our programmes are hands-on and totally focused on career outcomes. You'll benefit from studying in small classes with access to a wide range of broadcasting communication facilities and expertise. You'll develop an ability to think broadly and critically about the media and the implications of new technologies, and you'll have opportunities to gain real-world experience.



Scan to learn more about our Broadcasting courses



Pathway into broadcasting

Check out our Study and Employment Pathways programme on page 18



Bachelor of Broadcasting Communications



Level 7



Christchurch



Full-time: three years



February

Equip yourself for a future in the dynamic and fast-paced world of broadcasting.

Study towards the career of your dreams with this fast-paced, practical and skills-based degree. Specialisations include journalism, radio and screen production.

In the first year you'll learn fundamental media skills, with a focus on storytelling and building a strong group culture.

During your second year, and using skills learned in year one, you'll immerse yourself in your chosen specialisation (and sub-specialisations) and work as part of a functioning team within a radio station, newsroom or film and television production crew. Throughout this time, you'll use some of the most sophisticated and up-to-date media production equipment and software available in New Zealand education.

In your third year you'll complete an industry placement of up to 24 weeks, during which you'll learn and contribute as a credible peer in a professional broadcasting environment. As part of the third year, you'll also complete a reflective presentation assignment that will focus on key learning moments from the placement.

nzbs.com



Level



Location



Duration



Starts

Music

Express and enhance your artistic talents for a rewarding career in the music industry.

The music industry is huge and demand for talented, professional musicians is strong across a diverse range of career paths. Our highly respected music programmes will equip you with the skills, knowledge and performance experience needed to become a confident, capable and creative musician who can take advantage of this demand.

When you study with us, you'll learn from internationally acclaimed jazz, contemporary and classical musicians in a supportive, collaborative environment, alongside students from all over New Zealand who want to pursue a career in the global music industry. You'll become part of New Zealand's vibrant, exciting music scene where home-grown talent is celebrated, and you'll have extensive opportunities to build a rewarding and satisfying creative career.



Scan to learn more about our Music courses

New Zealand Certificate in Music



Level 4



Christchurch



Full-time: one year



February

Enhance your talent with performance skills and embark on a career in the music industry.

Built mainly around the study and performance of contemporary rock and pop, this programme is designed to assist you to perform with confidence and find your place in the New Zealand music landscape. It covers music fundamentals, playing in a band, writing songs and recording, plus the study of the emergence of the contemporary music industry globally and in New Zealand.



Bachelor of Music



Level 7



Christchurch



Full-time: three years



February

Prepare to thrive as a professional musician.

Our Bachelor of Music covers all the skills and knowledge you need to be a multi-faceted professional musician. You'll learn from a great team of tutors who are each also professional, working musicians. They perform, write and record across the country, from the Christchurch Symphony Orchestra to Salmonella Dub and everything in between.

The degree offers three pathways: Music Creation (composition); Music Performance; Music Production. This choice lets you specialise in the area you're passionate about, while learning alongside and working with musicians from other pathways. It's built around collaboration; you'll learn foundational skills and apply them in group projects and classes that directly mirror the real world of the music industry.

The programme focuses on the practical; even the 'academic' subjects are taught in a style that relates directly to the practical application of those subjects. More than half the programme content is practical in nature, a higher proportion than most music degrees in New Zealand. With such a focus on the practical, you're a musician from day one at Ara.

Your third-year capstone project allows you to design your own major project (which can include a work placement if relevant) with dedicated support from a specialist tutor.

Visit ara.ac.nz for all entry requirements and fee information.

Music Theatre

Polish your performance skills to shine on stage and excel behind the scenes.

The National Academy of Singing and Dramatic Art (NASDA) is one of the country's leading performing arts schools, offering the highest level of performance training to enable you to be a versatile, dynamic and successful performer.

We'll prepare you for the world stage in a practical, friendly and supportive environment, led by a faculty of leading industry professionals. You'll be nurtured and encouraged, and you'll gain the skills to thrive in this exciting industry. As part of your studies, you'll gain extensive experience through live performance in a variety of productions, and you'll make valuable connections with leading industry groups.



Scan to learn more about our Music Theatre courses

New Zealand Certificate in Performing Arts



Level 4



Christchurch



Full-time: one year



February

Start your journey towards a career in the entertainment industry.

This qualification is the only Level 4 performing arts programme in New Zealand. It will equip you with a repertoire of essential techniques and develop your skills in the areas of singing, dancing, movement, acting and performance. Together, these skills will increase your opportunity to work in the performing arts.



Bachelor of Music Theatre



Level 7



Christchurch



Full-time: three years



February

Gain a solid foundation of skills and experience for a rewarding theatrical career.

Taught by experienced performers and teachers who are dedicated to helping you make the most of your career, this degree will give you the skills needed to succeed in several branches of the performing arts.

You'll gain practical experience in performance and production work in key theatre disciplines such as acting, singing and dance, and study spoken voice, music theory, theatre history, technical theatre skills and research methods.

From the second year, you'll learn to integrate the skills acquired in your first year. In the final year, most assessment is performance focused with the option to pursue an independent capstone project of your own design. This project allows for work-integrated learning in industry settings—including the possibility of working in professional productions—and further specialisations to develop other, related skills within the worlds of applied theatre and theatre for the stage.






Money for study

Make study more affordable with a scholarship.

Check out what's available and apply at: ara.ac.nz/scholarships



"I get to use all the performance techniques and confidence I gained at NASDA in a job I love."

Erin, Music Theatre

Engineering & Architecture

Ara Pūhanga
me te Hoahoanga



Engineering

Become a technically savvy innovator with the expertise to change the way the world works.

Engineering is an exciting career option that suits practical people with enquiring minds and the ingenuity to find practical and cost-effective solutions to technical problems. It's also a hugely diverse and dynamic area with exciting opportunities to invent, collaborate and make a difference – potentially on a global scale.

We focus on practical and applied engineering with the aim of preparing you for a diverse spectrum of employment opportunities, both in New Zealand and overseas. You can be confident that your qualification gives employers a clear signal that you have the skills, knowledge and practical experience needed to be effective in the workplace from day one.



Scan to learn more about our Engineering courses



Pathway into engineering

Check out our Study and Employment Pathways programme on page 18



You might also be interested in ...

Master of Sustainable Practice on page 89



New Zealand Diploma in Engineering



Level 6



Christchurch



Full-time: two years

Part-time: up to five years



February, July*

Gain the skills and knowledge needed to work as an engineering technician.

With an emphasis on sound thinking and problem-solving skills, this diploma has been designed in conjunction with industry to meet the needs of the New Zealand engineering sector.

Available in four specialties (civil, mechanical, electrical and electronics), it includes core and elective courses focused on the design and implementation of engineering technology.

You'll gain a solid grounding in engineering theory and the principles of engineering science. You'll also acquire skills, knowledge and hands-on experience relating to your specialty.

**Electrical and electronic specialisations start in February only*

Visit ara.ac.nz for all entry requirements and fee information.



Level



Location



Duration



Starts

Bachelor of Engineering Technology



Level 7



Christchurch



Full-time: three years
Part-time: up to 10 years



February, July*

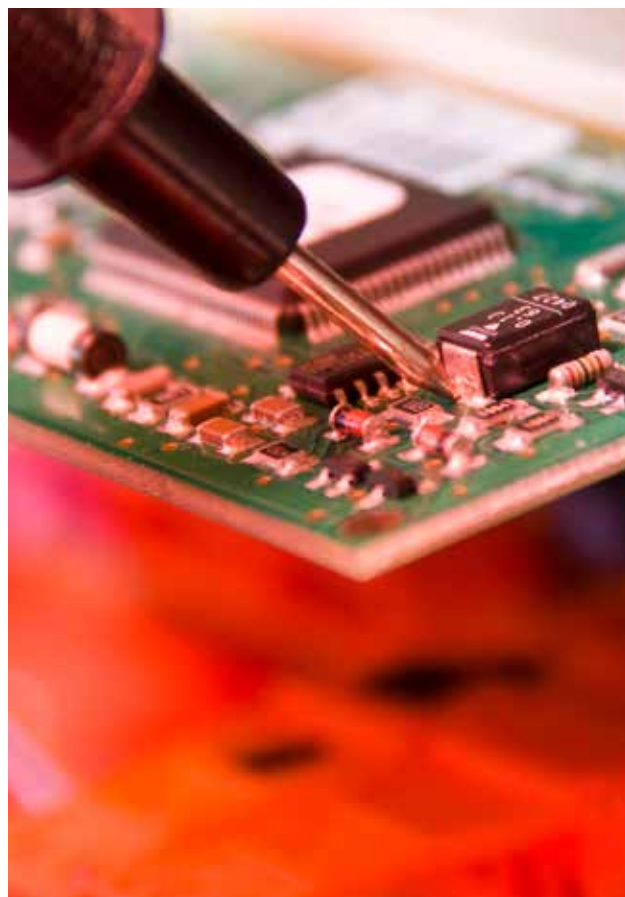
Prepare for an exciting career in engineering design and development.

Our Bachelor of Engineering Technology is a three-year degree available in three specialties: civil, mechanical and electrical. It's fully accredited by Engineering New Zealand and is recognised internationally under the Sydney Accord.

In your first year of study, you'll develop core engineering skills in computing, mathematics, management and the engineering sciences, plus some discipline-specific topics. This forms the foundation upon which you'll build your degree. Critical thinking, problem solving, and innovation will be a key part of your success.

In your second and third years you'll continue to deepen your understanding in your specialist area and engage in projects that allow you to apply your knowledge. You'll undertake an industry-related capstone project which may be sponsored by a local or international business. This offers the chance to test your skills against industry standards in a real-world scenario, while building your professional portfolio and developing important industry contacts.

**Electrical specialisation starts in February only*



Construction Management and Quantity Surveying

Excel in the construction industry with sought-after expertise.

Skilled professionals are needed up and down the country to work on residential, commercial, industrial and infrastructure projects. Taught by experts, our programmes in construction management and quantity surveying can equip you to make a significant contribution in the construction industry.



Scan to learn more about our Construction Management and Quantity Surveying courses



Pathway into construction management/quantity surveying

Check out our Study and Employment Pathways programme on page 18



You might also be interested in ...

Master of Sustainable Practice on page 89



New Zealand Diploma in Construction



Level 6



Christchurch



Full-time: two years
Part-time: available



February, July

Gain the specialist skills needed for a career in construction management or quantity surveying.

This programme offers specialisations in construction management and quantity surveying. It will equip you with the essential skills and knowledge needed to work in either discipline, on both residential and commercial building projects.

The construction management specialty covers the skills required at all stages of building projects, from conception to completion, with an emphasis on building technology, communication and health and safety. Other relevant vocational skills covered include planning, methodology and site management, procurement, programming and financial administration of contracts.

The quantity surveying specialty covers the monetary aspect of construction projects, from initial concept to final completion, including measuring, estimating and cost planning. Other important skills covered are procurement and financial administration of contracts as well as building technology and programming

Work experience components are included in the second year of the programme for full-time students.

Visit ara.ac.nz for all entry requirements and fee information.

Bachelor of Construction



Level 7



Christchurch



Full-time: three years
Part-time: up to eight years



February, July

Specialise in quantity surveying or construction management and become a sought-after construction industry professional.

The Bachelor of Construction offers two specialisations: construction management and quantity surveying. It's designed to equip you with the skills and knowledge needed to work at a high level in the construction industry, as a leader who's able to innovate and contribute to new ways of creating the built environment.

The programme starts with an introduction to the knowledge, skills, attributes and academic abilities required of a construction manager or quantity surveyor. You'll gain discipline-specific skills and knowledge, starting with a focus on small domestic buildings and moving on to low-rise and large commercial construction, followed by heavily serviced, multi-faceted projects.

Your year-three project work and assessments will require problem solving, independent research skills and application of cultural approaches and aspects of sustainability. Also in your third year, you'll be required to source and organise technical, project and academic research information, and evaluate, critique and propose well-rationalised solutions.

Graduate Diploma in Construction Management



Level 7



Christchurch



Full-time: one year
Part-time: up to four years



February, July

Expand your knowledge and skills for senior roles in the construction industry.

Designed to enhance your existing knowledge and skills in the construction industry, this programme will equip you with specialised construction management skill sets.

It will enable you to perform with a strong sense of responsibility for your own practice and to be capable of effectively collaborating with other construction-related disciplines. During the programme you'll extend your technical, applied and legal knowledge and critically review practice within the construction industry.

You'll also learn how to improve the productivity of construction projects and advise on construction methodology through the life cycle of a project. An industry project will allow you to apply your research and critical thinking skills.



Graduate Diploma in Quantity Surveying



Level 7



Christchurch



Full-time: one year
Part-time: up to four years



February, July

Develop your quantity surveying skills for a rapidly evolving industry.

This programme is designed to enhance your knowledge and skills in quantity surveying by equipping you with specialised occupation skill sets. It will enable you to perform with a strong sense of responsibility for your own practice and to be capable of effectively collaborating with other construction-related disciplines.

During the programme you'll extend your technical, applied and legal knowledge and critically review practice within the construction industry. You'll also learn how to provide strategic, budgetary and financial advice on development options through the life cycle of a construction project, and how to apply elements of construction economic theory to provide advice on the risks and uncertainty associated with cost-related project outcomes.

An industry project will allow you to apply your research and critical thinking skills.



Visit ara.ac.nz for all entry requirements and fee information.



Level



Location



Duration



Starts

Architectural Studies

Create a career shaping the buildings we live, work and come together in.

Whether you choose to study architectural studies or interior design, our team of industry professionals will inspire, guide and support you to achieve your study goals.

You'll gain the technical capabilities required for industry, learn about the variety of solutions that can be applied to design challenges, and discover how excellent visual, oral and written communication can help smooth a project's way. Your tutors will also connect you with their industry contacts to enhance your abilities through real-world workplace experience.



Scan to learn more about our Architectural Studies courses



Pathway into architectural studies

Check out our Study and Employment Pathways programme on page 18



You might also be interested in ...

Master of Sustainable Practice on page 89



New Zealand Diploma in Interior Design



Level 5



Christchurch



Full-time: one year

Part-time: up to four years



February

Turn your talent for design into a career in the dynamic world of residential interior design.

With this programme you'll study both the theory and practical aspects of interior design, and learn about light and colour, design principles, materials and finishes, lighting, soft furnishings, window treatments, ergonomic principles, New Zealand art and cultural/historical influences in interior design.

You'll also learn about architectural communication, building codes, laws and regulations, personal and business presentation, and business management. In addition, you'll develop your freehand drawing and manual drafting abilities, and learn how to use software such as Computer Aided Design and Photoshop. Your studies will include work-integrated learning in industry, and you'll participate in a public exhibition of your work alongside your fellow students.

New Zealand Diploma in Architectural Technology



Level 6



Christchurch



Full-time: two years
Part-time: up to five years



February, July

Contribute to the shape of our built environment as an architectural technician.

This programme will equip you with the essential knowledge and skills required to enter the architectural field as a technician working on domestic and commercial building projects.

You'll learn how to produce working drawings and documentation for small and medium scale projects that meet with the requirements of New Zealand legislation, codes of practice and New Zealand and Australian standards. The emphasis is on building technology, sound construction detailing and communication.

Bachelor of Architectural Studies



Level 7



Christchurch



Full-time: three years
Part-time: up to five years



February

Add technical skills and knowledge to your creative abilities for a career in architectural design.

During the first two years of your degree, we'll take you through foundation studies in drawing and design, computer-aided design, architectural design and related technologies. You'll also study building legislation and codes as they relate to architecture.

You'll spend about 40 hours a week in practical workshops, lectures and undertaking your own independent research and practice.

In your final year you'll learn about industrial practice laws for architecture, and you'll participate in EXIT, a showcase of student work which embeds architecture in context with city making.

Graduate Certificate in Building Information Modelling



Level 7



Christchurch



Full-time: six months
Part-time: up to five years



February

Be part of the future of construction, architecture and civil engineering.

As a methodology, Building Information Modelling (BIM) makes a significant contribution to the efficient design, construction and use of buildings. It's used by individuals, businesses and government agencies who plan, design, construct, operate and maintain diverse physical structures.

This programme—developed in response to industry demand for BIM-qualified team members—is a perfect professional development opportunity for anyone with a degree (or degree-equivalent qualification) in construction management, quantity surveying, architecture, civil engineering or facilities management. It provides a broad understanding of Building Information Modelling and can lead to roles such as BIM coordinator and BIM Manager.

Graduate Diploma in Building Information Modelling



Level 7



Christchurch



Full-time: one year
Part-time: up to two years



February, July

Become an in-demand leader in construction, architecture and civil engineering.

This qualification builds on the four foundational courses within the Graduate Certificate in Building Information Modelling. It will provide you with higher-level learning in construction-related fields, plus give you the opportunity to apply your knowledge to an industry-negotiated, applied BIM project.

It can lead to roles such as BIM lead, BIM specialist and BIM/CAD engineer or designer. Upon completion of the programme, you'll be ready to make an immediate impact in the construction industry and lead the way in driving innovation and efficiency.

Visit ara.ac.nz for all entry requirements and fee information.

Health and Science

Hauora me
te Pūtaiao



Animal Science

Establish yourself as an animal care professional.

If you have a compassionate attitude and you can relate to people who love animals, you'll thrive studying one of our animal-related courses. You'll gain extensive practical experience thanks to our excellent facilities on campus and the relationships our tutors have within the industry.



Scan to learn more about our Animal Science courses

New Zealand Certificate in Animal Management (Companion Animal)



Level 4



Christchurch



Full-time: one year



February

Combine your passion for animals with the skills and knowledge required to care for them professionally.

This is the perfect first step into a career working with companion animals. You'll learn about a range of domestic companion animals, their health and welfare and how to manage and care for them on a day-to-day basis. This will include animal anatomy and physiology, occupational health and safety, low-stress handling of animals, animal behaviour and health, animal first aid, record keeping, legislation and housing design.

More advanced topics include nutrition, infection control, care during illness/injury, safe use of medications, behavioural training and enrichment. You'll also undertake 120 hours of work-integrated learning in two different facilities over the year.



Pathway into veterinary nursing and animal care

Check out our Study and Employment Pathways programme on page 18



New Zealand Diploma in Veterinary Nursing



Level 6



Christchurch



Full-time: two years



February

Become skilled in a rapidly changing profession and enjoy a rewarding career working with animals and their owners.

This new, two-year, full-time programme will equip you with the technical knowledge and skills to work as a veterinary nurse in a clinical veterinary setting.

You'll learn through a mix of small group tutorials, full class discussions and clinical workshops. Work Integrated Learning (WIL) is a significant component of the programme. You'll be required to source your own work placements in high-quality veterinary practices that are willing to support your studies. We strongly recommend you aim to work in at least two clinics to broaden your skills.

At the completion of the programme, you'll have a high level of responsibility and discretion within your scope of practice, in a wide range of dynamic and often unpredictable situations and following protocols in all aspects of clinical veterinary practice or animal healthcare settings.

With this qualification, you may be eligible to apply for registration with the Allied Veterinary Professional Regulatory Council of New Zealand.

Visit ara.ac.nz for all entry requirements and fee information.



Level



Location



Duration



Starts



"I got straight into work-based training."

Marysha, Veterinary Nursing

Health Promotion, Nutrition & Exercise

Get the expertise to champion and inspire healthy lifestyles.

The rapidly expanding areas of exercise, sports science, nutrition and health promotion offer a wide range of exciting career opportunities.

At Ara you'll learn from experienced professionals in modern learning spaces with state-of-the-art equipment. Depending on the level of your qualification, you may also have the opportunity to undertake a significant industry project or work placement.



Scan to learn more about our
**Health Promotion, Nutrition &
Exercise courses**

New Zealand Certificate in Exercise



Level 4



Christchurch



Full-time: six months
Part-time: up to three years



February, July

Turn your passion for sport and exercise into a career in the fitness industry.

Designed as a practical pathway into the fitness industry, this programme will equip you with the practical skills and theoretical knowledge required to be successful, and will qualify you to register as a personal trainer.

You'll learn about exercise physiology, fitness assessment, nutrition, anatomy and physiology, exercise prescription, performance training, business management, and professional practice.



**Pathway into health promotion,
nutrition and exercise**

Check out our Study and Employment
Pathways programme on page 18



Bachelor of Applied Science



Level 7



Christchurch



Full-time: three years
Part-time: up to six years



February, July

Equip yourself for a career in health promotion, nutrition or sport and exercise science.

The Bachelor of Applied Science is available in three specialisations. Each will lead to a wide range of career opportunities. To best equip you for your future career, the degree provides many opportunities to get real-world experience and applied learning.

Health Promotion

Health promoters support the enhancement of health and the reduction of inequities in the community. With this specialisation you'll gain the skills and knowledge needed to support the holistic health of individuals, communities and populations, empowering them to make healthier choices.

Human Nutrition

Nutrition is a science with real-life applications, providing a range of transferable skills and leading to a variety of careers. This specialisation will enable you to become a Registered Nutritionist who can make a difference in the lives of individuals and communities by empowering people to make nutritious food choices.

Sport and Exercise Science

This specialisation will equip you with the practical skills, work experience, knowledge and expertise needed for employment in the areas of strength and conditioning, performance analysis, exercise prescription, coaching and sports coordination/development. Through our extensive industry network, you'll also gain hands-on experience working alongside industry experts, many of whom are Ara graduates.

Visit ara.ac.nz for all entry requirements and fee information.



Level



Location



Duration



Starts



"I really thrived off the smaller classes and the one-to-one communication with tutors. It was a more personal approach."

Rosa, Human Nutrition

Rosa is a co-founder of Two Raw Sisters

Human Services/Social Services

Help individuals, families and communities through challenging times.

Human services is a field which offers rewarding careers for individuals who can support the emotional needs of others.

At Ara you'll be taught by a dedicated team of qualified professionals with extensive experience across a broad range of social work environments. Our qualifications are highly respected in the sector and include opportunities to gain real-world experience working with people who need specialised attention.



Scan to learn more about our
Human Services and Social
Services courses

New Zealand Certificate in Health and Wellbeing



Level 4



Christchurch, Timaru



Full-time: one year
Part-time: up to four years



February, July

Learn how to support individuals, families and communities through difficult times.

This flexible programme (with classes held at school-friendly times) is available in three specialisations. The Mental Health and Addiction Support option will give you the skills required to support individuals to recover and build resilience, while the Social Services option will equip you in the areas of family violence support and prevention, social justice advocacy, community development and refugee support. The Community Facilitation option will give you the skills needed to assist individuals, families and community groups in the areas of disability support, diversional therapy, employment, housing and budget support. Each specialisation includes a 200-hour work placement with an organisation suited to your area of interest.



Pathway into health studies

Check out our Study and Employment
Pathways programme on page 18



You might also be interested in ...

Postgraduate Certificate in
Professional Supervision on page 56



Bachelor of Social Work



Level 7



Christchurch



Full-time: four years
Part-time: up to 10 years



February

Support individuals and families facing challenging situations by becoming a skilled social work practitioner.

This four-year degree will equip you to empower individuals, whānau and communities to address life challenges and enhance their wellbeing through personal growth, accessing resources, or social change and development in accordance with the principles of te Tiriti o Waitangi. It's underpinned by the principles of social justice, human rights, collective responsibility and respect for diversity.

Your studies will include a mix of interactive lectures, collaborative learning, scenario-based learning, industry and community projects, group critiques, guest speakers, investigative field trips, self-directed/online learning, role play, wānanga and research projects, among other delivery methods.

Practical and work-integrated activities will provide opportunities to apply your learning in a supported environment, either real or simulated. You'll undertake two field education placements totalling 120 days of supervised social work practice.

Visit ara.ac.nz for all entry requirements and fee information.

Principles of Family Violence Intervention Micro-credential



Level 7



Online*



Part-time: 12 weeks



March, August

Enhance your professional capabilities with knowledge and skills in an important area of social practice.

If you're working in health, social work or related fields, this micro-credential provides an excellent opportunity for professional development.

Areas covered include: the nature and prevalence of family violence including mediating factors; the context of family violence (historical influences and current issues); responses and intervention strategies; quality and effectiveness of intervention practice; applying theory to practice settings; social sustainability; and assessment of vulnerability. A whānau-centric approach is also central, and explores connecting Māori aspirations to whānau safety, supporting and empowering whānau, and kaupapa-centric response strategies.

The knowledge and skills you'll gain will enable you to undertake a reliable and fair-minded assessment of service-related safety needs in family violence case scenarios.

**Most of your study will be online, but you'll also attend two, full-day, on-site wānanga.*

Postgraduate Certificate in Professional Supervision



Level 8



Online*



Part-time: up to two years



February

Gain the expertise needed to supervise others effectively in professional contexts.

Professional supervision is critical in managing and ensuring continuous improvement in service delivery and employee effectiveness and satisfaction. Recognition of the value of this expertise is growing across an increasing range of disciplines.

Created for professionals working in health, social services, education, justice, corrections, chaplaincy and related sectors, this programme uses a blended delivery method. It's delivered in two, 30-credit courses designed to be studied sequentially. In the first course (Foundations of Supervision) you'll examine the theoretical underpinnings and models for the application of skills in supervisory practice. In the second course (Developing Supervision Practice) you'll apply the theoretical knowledge and supervision skills to your own supervisory practice.

**Most of your study will be online but you'll also attend three, two-day on-site wānanga (in Christchurch) in Semester 1, and two, wānanga in Semester 2.*



Laboratory Technology

Forge a career at the cutting edge of laboratory science.

The science industry is constantly developing and expanding, resulting in a wide range of exciting career opportunities in areas such as environmental monitoring, food technology, human health, veterinary diagnostics, product development and research.

At Ara you'll learn from expert tutors with extensive industry and research experience. Our applied science qualifications are practical and designed in collaboration with employers to meet industry needs. You'll acquire the knowledge and skills required for hands-on laboratory roles and graduate with the competence and confidence to be effective in the workplace from day one.



Scan to learn more about our
Laboratory Technology courses



and recommend solutions. The course covers science, information literacy, quality management and essential soft skills such as teamwork, communication and ethics. You'll also undertake at least 100 hours of relevant work-integrated learning (such as work experience, project work, simulations and activities that develop professional and reflective practice).

New Zealand Diploma in Applied Science (Level 5)



Level 5



Christchurch



Full-time: one year
Part-time: up to three years



February, July

New Zealand Diploma in Applied Science (Level 6)



Level 6



Christchurch



Full-time: one year
Part-time: up to three years



February, July

Meet the needs of an ever-expanding commercial science sector.

This programme will equip you with skills required by the commercial science sector, which encompasses increasingly automated food production, laboratories, manufacturing and environmental management businesses.

Course content is made up of a mix of practical laboratory skills that you'll use every day, and theory relating directly to the modern STEM (science, technology, engineering, maths) workplace. You'll learn how to collect, process, evaluate and report scientific data in an operational research context, and how to identify common problems with scientific processes



Pathway into laboratory science

Check out our Study and Employment Pathways programme on page 18

Gain in-demand skills for a career at the forefront of science.

With a strong industry focus, this programme covers a range of science-related learning. It combines seven mandatory courses in the areas of science, information literacy, quality management and project management, and optional courses that enable you to tailor your programme to your specific area of interest.

You'll gain a sound understanding of the technology used in applied science workplaces and increase your knowledge in chemistry, microbiology and molecular biology in workplace contexts. You'll also learn about legislative compliance needed in complex work situations and how to apply knowledge of ethical, social and culturally responsive behaviour to professional practice.

A work placement of at least 100 hours will enable you to apply your classroom learning in a workplace context and ensure that you graduate work ready, with credible experience.

Visit ara.ac.nz for all entry requirements and fee information.

Graduate Diploma in Laboratory Technology



Level 7



Christchurch



Full-time: one year
Part-time: up to three years



February, July

Expand your science knowledge and skills for a career as a laboratory technician.

Designed in collaboration with New Zealand employers, this programme will provide you with specific knowledge, practical skills and relevant analytical techniques for work as a laboratory technician.

These skills include critical thinking, problem solving and the ability to interpret results. You'll also gain an understanding of laboratory quality management, traceability and accreditation, and gain the skills to work independently and within groups.

The programme also includes a project and 260 hours of work placement to ensure you're work ready when you graduate.



"All the tutors are supportive and friendly."

Nisha, Laboratory Technology



Level



Location



Duration



Starts

Medical Imaging

Prepare for a technology-based career in the health sector.

If you're technically minded, empathetic and solutions focused, medical imaging could be a great career option for you. Medical imaging—also known as radiology—is a non-invasive medical procedure that uses cutting edge technology to capture internal images of the body, enabling doctors to diagnose and treat injuries and diseases.

At Ara you'll learn from expert tutors in our modern Manawa campus within Christchurch's central health precinct. You'll gain extensive real-world experience through clinical placements, and when you graduate, you'll be highly sought after by employers both here and overseas.



Scan to learn more about our
Medical Imaging course



Pathway into health studies

Check out our Study and Employment Pathways programme on page 18



You might also be interested in ...

Postgraduate Certificate in Professional Supervision on page 56
Master of Sustainable Practice on page 89

Bachelor of Medical Imaging



Level 7



Christchurch



Full-time: three years



January, July

Combine your interest in science and technology with the rewards of working with people in a health setting.

This programme will teach you how to perform radiography using x-rays and other equipment to take images of people's injuries and possible diseases. It will also give you a solid understanding of how CT scanning, magnetic resonance imaging (MRI), ultrasound, nuclear medicine and mammography contribute to patient diagnosis and treatment. You'll also develop the communication skills needed to deal with patients in a compassionate way.

To meet the standards of the profession, the degree combines theory with clinical practice at hospitals and clinics around New Zealand. This combination provides valuable training and assists with the transition from trainee to qualified medical imaging technologist.



Visit ara.ac.nz for all entry requirements and fee information.



Level



Location



Duration



Starts

Midwifery

Play a key role in supporting families before, during and after the birth of a child.

Midwives provide an essential and very meaningful service to families as they welcome a new child into the world. It's a role that carries significant responsibility, but it comes with many rewards too.

At Ara you'll learn from expert midwifery tutors who are passionate about sharing their skills, knowledge and experience of the profession with you so you can confidently embark on your own career as a midwife.



Scan to learn more about our
Midwifery course



Pathway into health studies

Check out our Study and Employment Pathways programme on page 18



You might also be interested in ...

Postgraduate Certificate in Professional Supervision on page 56
Master of Sustainable Practice on page 89

Bachelor of Midwifery



Level 7



Christchurch with satellites in Nelson, Marlborough, West Coast and Mid/South Canterbury



Full-time: three years*
Part-time: available



January

Learn how to confidently nurture pregnant women through one of life's most meaningful events.

Midwives work with women to provide care during pregnancy, childbirth and up to the first six weeks of a baby's life.

Recognised by the Midwifery Council of New Zealand, this degree uses blended delivery techniques to enable you to study and work from various South Island locations. All sites are supported by a midwifery lecturer who'll provide individual support, organise face-to-face tutorials, facilitate your online studies and coordinate local practice experience for you in your own region.

The degree is made up of theory and practice undertaken each year and includes compulsory block weeks in Christchurch. Topics covered include midwifery practice skills, nutrition, lactation and bioscience foundations. You'll learn about Māori health, integrated midwifery practice and rural midwifery practice to allow you to adapt to the wide range of needs and circumstances encountered in midwifery. You'll also follow at least 25 women throughout their midwifery care and facilitate 40 births in a variety of maternity settings.

By the time you graduate, you'll possess a good understanding of how to assess the social, psychological, physical, emotional, spiritual and cultural needs of each woman and her family, enabling you to support them through the childbirth experience.

**May be four years (to be confirmed)*



Level



Location



Duration



Starts

Nursing

Become a nurse and take advantage of the enormous scope that this rewarding profession offers.

Nurses can be found in every part of our hugely diverse health sector – from GP clinics, schools, prisons and mental health facilities to all the many and varied specialist wards in our hospitals and even in humanitarian aid zones overseas. If you're empathetic by nature and want to make a difference to the lives of others, nursing is a great career choice that delivers plenty of job satisfaction.

Our nursing programmes range from diplomas and degrees to specialist postgraduate short courses for professional development. Highly regarded by employers, these programmes will equip you with the skills and experience you need to start, develop or advance your career in nursing.



Scan to learn more about our Nursing courses



Pathway into health studies

Check out our Study and Employment Pathways programme on page 18



You might also be interested in ...

Postgraduate Certificate in Professional Supervision on page 56
Master of Sustainable Practice on page 89



New Zealand Diploma in Enrolled Nursing



Level 5



Christchurch and regionally*



Full-time: 18 months



March

Help meet the growing demand for nurses in New Zealand.

If you wish to apply for registration as an Enrolled Nurse with the Nursing Council of New Zealand, this programme which can be studied from almost anywhere in the South Island will equip you with the theory and clinical practice experience required.

It comprises a combination of theory, practice in simulated environments and clinical placements in different health care settings and locations. You'll practise your skills in different nursing contexts such as rehabilitation, acute care and mental health while studying the fundamentals of nursing and the human body.

**Satellites located in Nelson, Marlborough, West Coast and South Canterbury.*

Visit ara.ac.nz for all entry requirements and fee information.

Bachelor of Nursing



Level 7



Christchurch, Timaru



Full-time: three years



January, March, August*

Learn from experts in specialist facilities and help meet the demand for Registered Nurses.

This highly regarded programme combines theory with clinical experience and meets the Nursing Council of New Zealand (NCNZ) Competencies for the Registered Nurse Scope of Practice. Successful completion will enable you to apply for registration as a Registered Nurse with the NCNZ.

During your studies you'll gain an understanding of the many opportunities available for a career in nursing and be challenged to go beyond traditional health and illness care and focus on creating a supportive environment for health and wellbeing.

You'll have many opportunities to explore the diverse environments and relevant cultural understandings that nurses work within during clinical placements in hospitals, rest homes and health clinics, private practices and community care agencies.

**Timaru has March and August intakes only*



Graduate Certificate in Nursing



Level 7



Christchurch, Online



Part-time: up to six years



Various

Develop your nursing career by expanding your knowledge and skills.

This programme for Registered Nurses* offers a range of 5-10 credit courses at Level 7 and is designed to be studied part-time. You can choose to do one or two courses, or work towards the whole 60-credit qualification.

There are 30 course options to choose from. Some include: Professional Writing for Nurses, Adult Health Assessment and Rapid Assessment, Emergency Nursing, Medical and Surgical, Theatre and Recovery Nursing, Infant and Child Health, Pharmacology, Cancer Nursing, Managing Heart Failure, Assessment of Pain, Wound Care, Diabetes, ECG Analysis, Māori Health/Te Tiriti, Understanding Mental Health, Substance Misuse, and Nursing Management of Dementia, Delirium and Depression.

Courses are delivered through online media and/or two face-to-face sessions. Delivery of face-to-face content is mostly at our Manawa campus, near Christchurch Hospital. Registered Nurses can commence studying for this qualification immediately after graduating.

**Similar professional development opportunities at Level 5 are available for Enrolled Nurses. Contact us directly to find out more.*

Postgraduate Certificate in Health Practice



Level 8



Online*



Part-time: up to three years



January, July

Advance within your area of professional practice.

If you have a degree in nursing or another health-related area and you'd like to extend your knowledge and skills for advanced practice in the health sector, this programme will equip you with the confidence and skills to plan and co-ordinate multiple, complex patient care demands in your chosen specialisation.

It offers a selection of courses designed to meet the needs of health practitioners, health sector managers and other professionals whose practice has a focus on health.

**Some courses have a compulsory onsite component of 1-4 days.*

Postgraduate Diploma in Health Practice



Level 8



Online*



Part-time: up to four years



January, July

Take the next step towards specialist health roles.

This is an interdisciplinary programme for qualified health professionals and health service managers. It will suit you if you have a degree in nursing or another health-related area and you'd like to extend your knowledge and skills for advanced practice in the health sector.

You'll gain advanced practice knowledge and critical analysis skills, and you'll spend time in independent study, critical reflection and field work in your place of study or place of work. To achieve the diploma, you need to complete four of the available courses within four years.

**Some courses have a compulsory onsite component of 1-4 days.*

Postgraduate Diploma in Health Practice (Registered Nurse Prescribing)



Level 8



Online* and work integrated training



Part-time: over two years



January, July

Gain the skills required to prescribe medications.

This postgraduate diploma is for experienced registered nurses (RNs) wishing to apply to the Nursing Council of New Zealand (NCNZ) for authorisation to prescribe in primary health and speciality teams as a designated nurse prescriber.

This qualification will equip you with advanced practice knowledge and critical analysis skills. During the programme you'll spend time in independent study, critical reflection and fieldwork in your place of study or place of work.

You'll need to study four compulsory courses, one of which is a practicum course. Entry to the practicum course requires a passing grade of at least a B in all of the other three compulsory courses, alongside other requirements.

Please refer to the NCNZ website regarding the features of the work environment and support necessary to become an RN prescriber.

**Some courses have a compulsory onsite component of 1-4 days.*



Visit ara.ac.nz for all entry requirements and fee information.

Master of Health Practice



Level 9



Online*



Part-time: available up to five years maximum



January, July

Extend your expertise in health practice and expand your career opportunities.

If you have a degree in nursing or another health-related area and you'd like to extend your knowledge and skills for advanced practice in the health sector, this programme will build on your specialist knowledge, enabling you to progress in your career.

You'll demonstrate mastery of your area of specialist practice or knowledge and demonstrate capacity for leadership.

**Some courses require attendance at on-site workshops in Christchurch.*

Master of Health Science



Level 9



Online*



Part-time: available up to six years maximum



January, July

Broaden your expertise in health practice to increase your career opportunities.

The Master of Health Science is tailored for health managers and health practitioners, specifically registered nurses and other health professionals working for Te Whatu Ora and PHOs.

You'll expand your knowledge within an inter-disciplinary learning environment and develop skills in critical analysis, constructive synthesis, and advanced practice and research within your chosen discipline area. You can choose between a scholarly project pathway, or a thesis pathway.

**Some courses require attendance at on-site workshops in Christchurch.*

Master of Nursing



Level 9



Online



Full-time: two years
Part-time: available up to six years maximum



January, July

Enhance your capacity to improve patient outcomes and health services by becoming a nurse practitioner.

The Master of Nursing is an applied, clinically focused programme. It's been specifically designed to prepare you for advanced practice in the nurse practitioner scope and is approved by the Nursing Council of New Zealand.

You'll study advanced practice in pathophysiology, pharmacotherapeutics and health assessment and diagnostic reasoning. Additional courses include evidence for health practice and influences on complex health care. There are also two practicums.

Once completed, you'll be able to demonstrate mastery of your specialised area of practice and be able to provide leadership and practice collaboratively.



Visit ara.ac.nz for all entry requirements and fee information.



Level



Location



Duration



Starts

Osteopathy

Learn how to use your understanding of the human body to help people overcome aches, pains and injuries.

Osteopathy is a form of manual medicine focusing on the body's structure and how various parts of the body – such as joints, muscles and connective tissue – function together. Osteopaths evaluate and diagnose patients and use their hands to treat aches, pains and injuries.

Ara is the only place in New Zealand where you can study towards becoming an osteopath. In addition to theory, you'll gain substantial, hands-on experience, including at our on-campus osteopathic clinic where you'll treat patients under the guidance of qualified osteopaths.



Scan to learn more about our Osteopathy courses

Bachelor of Musculoskeletal Health



Level 7



Christchurch



Full-time: three years



February

Gain skills for a health sector career with diverse opportunities.

Developed according to best practice approaches in clinical education and delivered utilising innovative teaching methods, this programme will equip you with the knowledge and skills required for employment in non-registered areas of health care and management.

You'll start by gaining foundational knowledge of musculoskeletal health and osteopathy and forming a basis for critical thinking. In year two, the emphasis is



Pathway into health studies

Check out our Study and Employment Pathways programme on page 18



You might also be interested in ...

Postgraduate Certificate in Professional Supervision on page 56
Master of Sustainable Practice on page 89



on evidence-based clinical practice and extending your bioscience knowledge. Your final year focuses almost entirely on the development of clinical practice learning, critical thinking and increasingly complex problem solving and decision making.

Throughout the degree, clinical practice courses will give you industry experience, enabling you to apply your knowledge in real-world environments.

Postgraduate Diploma in Osteopathy



Level 8



Christchurch*



Full-time: one year



February

Prepare for registration to become an in-demand, qualified osteopath.

There's strong demand for qualified osteopaths in New Zealand, Australia and Asia. This qualification enables you to gain the necessary additional skills and knowledge required to apply for registration to practice with the Osteopathic Council of New Zealand*.

It involves case-based learning which is clinically relevant and focused on ensuring you're competent and safe to enter the profession.

Areas covered include how to: work professionally, ethically and legally in primary healthcare settings; apply ethical decision-making processes to your practice; apply interpersonal and intrapersonal skills and professional values to your practice for people with diverse needs and backgrounds; and how to respond culturally and safely when working with patients, colleagues, healthcare workers and communities.

As part of the programme, you'll undertake over 500 hours of supervised clinical practice at our on-campus osteopathic clinic.

**To enrol, you must first have completed the Bachelor of Musculoskeletal Health.*



Hospitality & Services Industries

Te Hoe Manaaki me
kā Ratoka Ahumahi



Dual Enrolment

Learn with us while you're still at school.

If you're in Years 11 to 13 at secondary school, Dual Enrolment courses are a way to experience tertiary study while still at school. You spend a day or two at Ara and the rest of the week at school. It's a great opportunity to earn NCEA credits and get a head start in a subject you want to study when you leave school.



Scan to learn more about our Dual Enrolment courses

Youth Guarantee

Discover your path with a free course.

If you're aged between 16 and 24 and not in school, employment or any other training, a Youth Guarantee course is the smart way to get ahead. Free and available in a wide range of subjects, these courses set you up with great foundation skills for employment or further study, and enable you to make confident decisions about your future.



Scan to learn more about our Youth Guarantee courses

Dual Enrolment



Level 1 – 3



Christchurch, Timaru, Oamaru*



Part-time: one year



February

**Some courses are available in Christchurch only or in Timaru and Oamaru only*

We offer the following Dual Enrolment courses in:

Food and Hospitality

- Bakery Level 3 (2-day)
- Cookery Level 3 (2-day)
- Cookery and Restaurant Service Skills Level 3 (1-day)
- Hospitality, Cookery & Beverage Level 2 (2-day) *(Chch and Oamaru only)*
- Hospitality Supported Learning Level 1 (1-day)

Hair and Beauty

- Beauty Therapy and Hairdressing
- Hairdressing and Beauty Therapy Level 3 *(Timaru only)*
- Introduction to Beauty Therapy Level 2 (1-day)
- Introduction to Barbering Level 2 (1-day)
- Salon Skills Level 2

Youth Guarantee



Level 2 – 3



Christchurch, Timaru*



Full-time: six months



February, July*

**Not all courses are available at both locations, or in both semesters. Please contact us for exact details.*

We currently offer these Youth Guarantee courses:

- New Zealand Certificate in Salon Skills (Introductory) Level 2
- New Zealand Certificate in Hairdressing (Salon Support) Level 3

Visit ara.ac.nz for all entry requirements and fee information.

Bakery

Learn the skills, techniques and artistry required for a career in baking.

Professional baking is more than just making breads, cakes, pies, pastries and desserts. It's also about understanding the ingredients, the recipes and the science behind the process. As a baker you also need to know how to operate efficiently in a commercial food setting and be comfortable working in a fast-paced environment.

At Ara we can equip you with all these skills in preparation for a career in bakery. Our highly experienced tutors are passionate about sharing their knowledge and encouraging your creativity in the kitchen. They'll ensure you graduate with skills and confidence, ready for an exciting career in the baking industry.



Scan to learn more about our Bakery courses



Still at school?

Check out our Dual Enrolment food and hospitality study options on page 15



Pathway into tourism and hospitality management

Check out our Study and Employment Pathways programme on page 18

New Zealand Certificate in Baking (Generalist)



Level 4



Christchurch



Full-time: one year



February

Learn the essential skills required to work in a commercial or boutique bakery.

Gain the essential skills you need for a successful career as a professional baker with this industry-focused programme.

We'll teach you how to produce a range of bakery products including biscuits, breads, cakes and pastries, plus all the basic principles of bakery science, quality management, health and safety and hygiene standards required for the commercial baking industry.

As part of the programme, you'll take part in work placements at local cafés and bakeries, and you'll be involved in operating and preparing food for our on-campus café, The Pantry.

New Zealand Diploma in Cookery (Advanced Patisserie)



Level 5



Christchurch



Full-time: one year



February

Acquire advanced patisserie skills and take a leading role in commercial kitchen environments.

This programme will equip you with the advanced preparation, cookery and presentation techniques to confidently plan and produce a wide range of complex dishes including hot and cold desserts, gateaux and torten.

You'll also learn effective methods for planning and monitoring workflow and supplies, and strategies for managing staff and operations to meet performance targets.



Cookery

Transform your love of food into a career as a professional chef.

Ara is renowned for the quality of its cookery graduates and has a proud record of success at national and international competitions.

In our commercial training kitchens, our highly experienced cookery tutors will equip you with all the essential skills you'll need as a chef – from culinary expertise and presentation techniques to knowledge of related areas like menu planning, ingredient sourcing, inventory and health and safety. You'll graduate prepared for an exciting career which can take you around the world, from local cafes and function venues to international resorts and Michelin star restaurants.



Scan to learn more about our Cookery courses



Still at school?

Check out our Dual Enrolment food and hospitality study options on page 15



Pathway into tourism and hospitality management

Check out our Study and Employment Pathways programme on page 18

New Zealand Certificate in Cookery



Level 4



Christchurch, Timaru



Full-time: one year



February, July*

Gain the skills and confidence required to work in fast-paced commercial kitchen environments.

During this course you'll gain the skills required to create a wide range of complex dishes including meats, poultry, cold larder and desserts.

You'll learn about preparation and presentation techniques, food safety, health and safety, operating policies of commercial kitchens and communication practices between colleagues, managers and customers.

**July intake available in Christchurch only.*

New Zealand Diploma in Cookery (Advanced Cookery)



Level 5



Christchurch



Full-time: one year



February, July

Learn how to produce advanced dishes and take a leading role in commercial kitchen environments.

This advanced programme will equip you with the skills to confidently plan and produce a broad range of meat, poultry, fish and larder dishes, employing advanced preparation, cookery and presentation techniques.

You'll also learn effective methods for planning and monitoring workflow, strategies for managing staff and operations to meet performance targets, and how to plan, develop and design dishes and menus.



RECOGNITION
OF QUALITY
CULINARY EDUCATION
WORLD ASSOCIATION
OF CHEFS SOCIETIES

Visit ara.ac.nz for all entry requirements and fee information.

Hospitality & Tourism

Pursue your passion for serving perfection.

The huge and ever-expanding hospitality and tourism sector relies on people with a passion for delivering exceptional service and experiences.

Our courses in these areas are very practical and designed to equip you with the hands-on skills employers need. You'll learn from highly experienced tutors – including many who continue to work in the industry – and graduate with excellent employment prospects.



Scan to learn more about our
Hospitality and Tourism courses

New Zealand Certificate in Food and Beverage Service



Level 3 and Level 4



Christchurch



Full-time: six months per programme
or one year for both
Part-time: available



February, July

Gain essential hospitality, food and beverage service skills in our specialist training facilities.

Great customer service and product knowledge are the keys to standing out to an employer. This highly practical programme (with Level 3 and Level 4 options) has a choice of study strands.

Learning in our campus café and restaurant from tutors with extensive experience, you'll acquire the skills to produce a range of bar and espresso beverages to a high standard and provide formal table service. In the Level 3 programme you'll learn the selling skills and product knowledge (including wine, beverages and menu items) for working in a licensed restaurant or bar. In the Level 4 programme you can build on this knowledge by learning how to design cocktails, and provide advanced table service.

NB: See the website for more information on strands and intakes.



New Zealand Certificate in Food and Beverage Service (Workplace Option)



Level 3



Christchurch, Timaru



Part-time: 17 weeks



July

Learn essential hospitality, food and beverage service skills in your current front-of-house role.

If you're already employed in a hospitality role, this highly practical programme will enable you to upskill on the job.

Under the supervision of a senior colleague and using a learning programme created by Ara, you'll acquire the skills to produce a range of bar and espresso beverages to a high standard and provide informal table service. You'll also gain an understanding of operating procedures in cafes, bars and restaurants and learn how to communicate effectively in these environments.



Still at school?

Check out our Dual Enrolment food and hospitality study options on page 15



Pathway into tourism and hospitality management

Check out our Study and Employment Pathways programme on page 18

New Zealand Diploma in Hospitality Management (Level 5)



Level 5



Christchurch



Full-time: one year



February, July

Equip yourself with management skills for the hospitality industry.

Trainee manager, supervisor, team leader; whatever role you're seeking in the hospitality industry, this programme will equip you with essential skills you can build on throughout your career.

You'll learn about leadership principles, how to build and maintain positive staff relationships, and how to monitor and maintain operating procedures and compliance requirements. Key areas covered include the importance of excellent customer service and how to work in collaborative, team-based environments within restaurant, bar, barista, hotel reception and accommodation contexts. In addition, you'll gain a sound understanding of local and international tourism and the essential contribution tourists make to the hospitality industry.

You'll undertake a practical work placement which will give you the opportunity to set personal and professional development goals.

New Zealand Diploma in Hospitality Management (Level 6)



Level 6



Christchurch



Full-time: one year



February

Prepare to take on management responsibilities in the fast-paced world of hospitality.

With a focus on how to think rather than what to think, this diploma explores hospitality at a management level.

You'll learn how to manage and develop staff to ensure excellent customer experiences, and how to enhance positive staff relationships through negotiation, communication, consultation and reporting strategies. Hospitality operations are covered in depth. You'll learn how to plan and develop business strategies that encompass financial management, product development, sales and marketing and continuous improvement processes. You'll also learn how to manage change to improve business performance, and the role of



technology in management and technology-driven marketing solutions. The role of sustainability and the impacts of tourism and hospitality on infrastructure and the environment are also explored.

A practical work placement will give your learning context and enable you to use research methodologies to investigate a topic or solve a problem connected to the workplace.

Bachelor of Applied Management



Level 7



Christchurch



Full-time: three years
Part-time: up to 10 years



February, July

Gain specialist skills to excel in hospitality or tourism.

This flexible degree will prepare you to succeed in hospitality management or tourism management by equipping you with widely applicable, real-world knowledge and skills.

In your first year you'll develop a depth of business knowledge required for any commercial context, such as leadership, accounting, marketing, HR and sustainability.

In your second year you'll choose to specialise in either tourism management or hospitality management (or both for a double major) and take a range of courses appropriate to your specialisation.

Your final year of study involves more complex critical and strategic thinking skills. A work placement with a hospitality or tourism-related business will put your learning to the test. Through a practical project with a real-world organisation, you'll address a business problem or advance a business opportunity for that organisation. On successful completion, you'll have real-life work experience to add to your CV.

Visit ara.ac.nz for all entry requirements and fee information.

Beauty Therapy

Learn how to help people look and feel their best.

Ara's beauty therapy, skincare and make up courses will equip you with all the skills and knowledge you need to embark on a career in the beauty industry. You'll learn from expert tutors and gain lots of practical experience at our in-house salon which is open to the public.

When you graduate, you can take advantage of the range of career opportunities available in the industry. You could specialise in a particular treatment like electrolysis or facials, becoming a makeup artist for film and TV, work in salons and spas around the world (even on cruise ships) or start your own business.



Scan to learn more about our
Beauty Therapy courses



Still at school?

Check out our Dual Enrolment study options in hairdressing, barbering and beauty therapy on page 15



New Zealand Certificate in Makeup and Skin Care (Introduction)



Level 3



Christchurch



Full-time: six months



February, July

Equip yourself with foundation skills for the beauty industry.

This programme is a great way to gain a foundation of knowledge and hands-on skills for working as a skincare and makeup technician. You'll learn about skin types and conditions, makeup techniques, workplace requirements and professional communication and conduct.

Within our treatment rooms, you'll also have the opportunity to work on models, applying and gaining knowledge about a wide range of makeup and skincare products.

New Zealand Certificate in Beauty Therapy



Level 4



Christchurch, Timaru



Full-time: one year



February

Acquire the skills and knowledge needed to work as a beauty therapist in New Zealand or overseas.

Through a combination of theory and practice, this programme will equip you to walk into a job, consult with clients and perform beauty therapy services in a professional manner. Aspects covered include professional practice, business awareness, anatomy and physiology, facial treatments, makeup, nail and waxing services, spray tanning and relaxation massage.

You'll learn from experienced tutors and a wide range of industry speakers including spa managers, appearance medicine specialists and cosmetic representatives. These professionals will give you an insight into products, techniques, technologies, and specific qualities that employers look for. You'll also work with real clients in our industry-standard salons.



New Zealand Diploma in Beauty Therapy



Level 5



Christchurch



Full-time: one year



February

Expand your skills and expertise to become a highly competent beauty professional.

If your goal is to become a highly qualified beauty therapist, this programme is the perfect way to build on your existing knowledge and skills.

It will equip you to work in a variety of settings and take on greater responsibilities. You'll also become capable of managing or owning your own beauty clinic. Specifically, you'll learn about a range of treatments that will extend your capabilities in advanced skincare, nutrition, microdermabrasion, electrolysis hair removal, hot stone massage, body wraps and exfoliations, dermal needling and LED light therapy.

You'll extend your ability to take on advanced responsibilities and implement professional standards in the areas of health, safety and hygiene - skills that are valued in the industry and will enhance your employment opportunities.



"It prepared me with the right tools, skills and opportunities."

Annica, Beauty Therapy

Visit ara.ac.nz for all entry requirements and fee information.



Level



Location



Duration



Starts

Hairdressing & Barbering

Gain the skills for a fulfilling career in the hairdressing industry.

If you're a people person, creative and good with your hands, hairdressing and barbering could be your perfect career. Every day you'll apply your skills to the task of enhancing the confidence and self-image of your clients, and as techniques and products evolve, you'll always be learning.

At Ara, you'll learn from industry professionals who'll teach you both theory and practical skills in our modern training salons. You'll also gain valuable real-world experience by operating salon days on campus with real paying clients.



Scan to learn more about our
Hairdressing and Barbering
courses



Still at school?

Check out our Dual Enrolment study options in hairdressing, barbering and beauty therapy on page 15

New Zealand Certificate in Hairdressing (Salon Support)



Level 3



Christchurch, Timaru



Full-time: one year



February

Gain the foundation skills needed to start a career in hairdressing.

If you're seeking an introduction to hairdressing, this programme will give you a solid foundation to build on with further study.

You'll learn about salon culture, operations and terminology so you can communicate effectively with clients, peers and supervisors, perform reception duties, and master hairdressing theory and practical skills.

Other areas covered include: conducting thorough client consultations; applying hair treatments; removing hair colour; understanding home hair care products; shaping and styling hair using different techniques and tools; maintaining cutting equipment; performing colouring and de-colouring services; handling chemical treatments; and adhering to personal hygiene, presentation, health, safety and environmental standards within a salon.



Level



Location



Duration



Starts

New Zealand Certificate in Hairdressing (Professional Stylist)



Level 4



Christchurch



Full-time: one year



February

New Zealand Certificate in Commercial Barbering



Level 4



Christchurch



Full-time: one year



February

Add to your salon skills to give yourself a strong start to a career in hairdressing.

This programme has been designed to follow on from the New Zealand Certificate in Hairdressing (Salon Support) Level 3.

As well as continuing to build on the skills and knowledge you've already acquired, you'll learn about advanced hair and scalp analysis, advanced cutting and chemical and non-chemical services. You'll also design, develop and create long hair creative styles for special themes or events. Work experience within the industry is a crucial part of your learning.

Upon completion you will be a fully-qualified hairdresser possessing skills in advanced consultations and treatments, cutting techniques, creative colouring and chemical knowledge, as well as strong interpersonal skills.

Master the art of barbering for a career in an expanding sector.

Taught by barbering experts, this heavily practical programme will equip you with detailed knowledge and skills to be able to work in the ever-growing barbering industry. It covers classic and modern barbering techniques, scissor skills, clipper and fade work including traditional wet shaves, plus professional ethics and standards.

You'll study the latest industry fashion trends and develop your own style. You'll also learn about health and safety requirements, front-of-house operations and discover how to enhance your social media capabilities in order to attract a regular clientele. Our on-site barber shop provides a real-life industry environment where you'll build your skills and capabilities as a professional commercial barber.



Visit ara.ac.nz for all entry requirements and fee information.

Massage Therapy

Become a skilled and qualified massage practitioner.

Massage therapy is a form of health care that dates back thousands of years. It's used to support an individual's wellbeing and to balance their physical, emotional and mental state. Our massage therapy programmes allow you to specialise in a particular area of massage – remedial or wellness and relaxation – or to study both areas to broaden your skill base. You'll learn from highly experienced practitioners and gain solid theoretical knowledge to complement the hands-on skills you'll acquire. Your studies will also include clinical practice hours to ensure you graduate with real-world experience and ready for employment or self-employment.



Scan to learn more about our
Massage Therapy courses

New Zealand Diploma in Wellness and Relaxation Massage



Level 5



Christchurch



Full-time: one year



February

Prepare for a career as a wellness and relaxation massage therapist.

This qualification will equip you to provide wellness and relaxation massage therapy services within the health sector and massage therapy industry. You'll learn about the anatomical, physiological and basic chemical concepts of the body and application methods to perform a full body massage treatment. You'll also learn a range of professional, self-management and communication skills required to meet client and industry needs. In addition, you'll gain insight into the psychological benefits of massage relevant to professional practice. Learning takes place in a real-world industry environment and includes clinical practice hours during which you'll apply and refine your massage techniques.



Still at school?

Check out our Dual Enrolment study options in hairdressing, barbering and beauty therapy on page 15



New Zealand Diploma in Remedial Massage



Level 6



Christchurch



One year



February

Prepare for a career as a remedial massage therapist.

Designed to build upon the New Zealand Diploma in Wellness and Relaxation Massage Level 5, this qualification will equip you to provide remedial massage therapy services to the public in allied health, wellness and medical settings that require this specialist service.

It will develop your existing skills in massage therapy assessment, enquiry, observation and physical testing. You'll learn how to identify and interpret pathological processes on body systems and medical diagnostic testing, and you'll go into further depth regarding the psychology of health. You'll also apply sport-specific assessment and massage therapy techniques to identify and treat a range of sports-related injuries.

Learning takes place in a real-world industry environment and includes clinical practice hours.



Come check us out!

Get a feel for what it's like to study with us on a guided campus tour.

Book your tour at:
ara.ac.nz/book-a-tour

Visit ara.ac.nz for all entry requirements and fee information.

Language, Education & Sustainability

Reo, Ako,
Toitū te Taiao



Education

Encourage and facilitate life-long learning as a professional educator.

Effective educators have an aptitude for outstanding communication and a passion for working with learners to achieve their goals. Our tutors who educate educators all have recent experience of both teaching and teacher training. No matter what kind of learner you're interested in helping, our hands-on approach combined with our extensive industry connections will ensure that your study leads to fulfilling employment.



Scan to learn more about our Education courses



New Zealand Certificate in Early Childhood Education and Care



Level 3



Christchurch, Timaru



Full-time: six months



February

New Zealand Certificate in Early Childhood Education and Care



Level 4



Christchurch, Timaru



Full-time: six months



July

Take the first step towards a rewarding career working with children.

The New Zealand Certificate in Early Childhood Education and Care will prepare you to participate in the care and education of infants, toddlers and young children in entry-level carer roles, and for higher level study leading to a teaching qualification.

The programme covers: early childhood learning and development progression; bicultural framework for childhood learning in Aotearoa New Zealand; planning learning experiences for young children; health, safety and wellbeing in the early childhood environment; ethical responsibilities and professional practice; basic Te Reo Māori and tikanga Māori specific to the early childhood environment. It also includes a work placement practicum in an early childhood setting where you can apply what you're learning.

Build on your knowledge and skills for the early childhood education sector.

This programme will prepare you to provide practice-based education and care in early childhood settings and/or to pathway into higher-level study leading to a teaching qualification.

The programme covers: designing learning experiences aligned to socio-cultural theories of learning and development; developing a personal philosophy of professional practice; developing inclusive teaching practices that promote diversity and the place of Māori as tangata whenua; using effective communication strategies to establish healthy relationships in early childhood environments. It also includes a work placement practicum in an early childhood setting where you can apply what you're learning in an authentic work environment.



You might also be interested in ...

Postgraduate Certificate in Professional Supervision on page 56

Visit ara.ac.nz for all entry requirements and fee information.

New Zealand Diploma in Early Childhood Education and Care



Level 5



Christchurch, Timaru



Full-time: one year



February

Extend your skills to become a knowledgeable and confident early childhood educator.

This programme will equip you to provide high quality, practice-based education and care in early childhood settings, and/or to pathway into higher level study leading to a teaching qualification.

The programme covers: the early childhood education curriculum (Te Whāriki) and the role of play in child learning and development; effective written and oral communication; and the use of te reo Māori. It also explores bicultural infant and toddler care and education strategies to create high quality, safe and inclusive learning environments.

You'll develop, reflect, and receive feedback on skills in observation, assessment and planning for teaching young children. The programme includes a 180-hour supported placement experience, enabling you to support children's social and emotional competence.



New Zealand Certificate in Adult Literacy and Numeracy Education (Vocational/Workplace)



Level 5



Christchurch



Part-time: 15 weeks



January

Develop learners' literacy and numeracy within your vocational teaching context.

This professional learning course is for practising educators and meets TEC qualification requirements for educators working with foundation level learners.

Delivered through a blend of workshops, online activities and workplace support, it focuses on applied teaching practice, enabling you to embed literacy and numeracy development activities into your vocational or workplace training programme.



New Zealand Certificate in Adult and Tertiary Teaching



Level 5



Christchurch



Part-time: 15 weeks



January

Enhance your teaching skills and further your career.

Delivered through a blend of workshops, online activities and workplace support, this work-based programme focuses on applied teaching practice. Areas covered include group facilitation skills, questioning strategies, assessment and moderation, and learner-centred approaches suitable for diverse learner groups. Upon completion, you'll be able to develop core teaching and learning facilitation skills appropriate to New Zealand adult and tertiary learning environments.

Graduate Diploma in Tertiary Teaching and Learning



Level 7



Christchurch, online



Part-time: one year



Various

Enhance your tertiary teaching practice and broaden your career opportunities.

Designed for practicing tertiary educators, this programme will enable you to create learning environments that enhance learning and empower learners.

You'll gain group facilitation skills, questioning strategies and learn how to use evidence-based principles and practices to design, facilitate, assess and evaluate learning. You'll also develop skills for using an inquiry process for continual improvement in your teaching practice, develop collegiality in your work environment and explore learning theories and models to inform your teaching practice and philosophy. The emphasis is on achieving the best possible synergies between the dual roles of educator and industry professional.



Visit ara.ac.nz for all entry requirements and fee information.



Level



Location



Duration



Starts

English

Improve your English for work, study and everyday life.

Ara is internationally recognised as one of the best English language training centres in New Zealand, with students from more than 30 countries choosing to study with us to improve their English speaking, listening, reading and writing.

In addition to the high-quality tuition from our friendly, professional tutors, you'll have the opportunity to develop your skills on a daily basis by mixing with other English-speaking students on campus.



Scan to learn more about our English Language courses

New Zealand Certificate in English Language



Levels 1 to 5



Christchurch, Timaru, Ashburton



Full-time: six months (per level)
Part time: one year (per level)



February, July

Improve your language skills for employment, study and everyday situations.

This qualification has Foundation, General, Applied and Academic options at various levels. All options will give you language skills and knowledge for living and working in New Zealand so you can communicate with some independence and fluency in English language contexts.



English Language Training



Level 4



Christchurch, Timaru



Full-time: four weeks minimum
Part-time: four weeks minimum*



Weekly

Enhance your fluency, accuracy and vocabulary through speaking, listening, reading and writing.

This is an intensive English language programme. You'll learn core skills of reading, writing, listening and speaking, and develop specific conversation skills such as turn taking, active listening, responding, communication strategies and negotiation. The learning environment is active, hands-on and collaborative with pair and group activities, role playing, presentations and discussions.

**Depending on visa status*

Certificate in Teaching English to Speakers of Other Languages (CELTA)



Level 5



Christchurch, blended/online



Part-time: 11 weeks
Blended/online: 15 weeks



July, November

Learn how to teach English anywhere in the world.

With this internationally recognised Cambridge ESOL qualification, you can teach English as an additional language to people anywhere in the world and your skills will be in high demand.

You'll gain an understanding of the key principles and practices of effective English language teaching. For your assessed teaching practice, you'll teach two different classes with students from a wide variety of language backgrounds.

Māori Language and Culture

Add to your everyday skillset by enhancing your cultural capability.

Our Māori language and culture courses are designed to give you a distinct advantage in today's competitive employment market, and to enhance your ability to communicate within everyday family and community environments.

Our expert tutors are passionate about sharing their knowledge, skills and industry connections. In a stimulating and supportive whānau environment they'll work with you to discover your strengths and help you succeed.



Scan to learn more about our Māori Language and Culture courses



Te Pōkaitahi Reo (Reo Rua) (Te Kaupae 2) - Beginners



Level 2



Christchurch, Timaru, Ashburton



Part-time: one year



February



Start your journey of discovery into te reo.

If you have a personal or professional interest in te reo Māori and you'd like to contribute positively to the development of the Māori language this is the start you need.

You'll develop the language skills to communicate, with little support, in familiar everyday contexts and in some Māori environments. You'll learn and practice aspects of hui whakatau (gatherings), mihihihi (acknowledgments and introductions), and discuss traditional narratives. Marae-based experiences will provide authentic, meaningful engagement with local Māori communities.

Visit ara.ac.nz for all entry requirements and fee information.



Level



Location



Duration



Starts

Te Pōkaitahi Reo (Rumaki, Reo Rua) (Te Kaupae 3) - Elementary



Level 3



Christchurch, Timaru



Full-time: 19 weeks
Part-time: one year



February

Gain beginner te reo skills for everyday life and work.

This programme is ideal for increasing your understanding of te reo for your career and personal development.

Designed for fast progress, you'll learn in weekly class sessions and maintain your progress at times that suit you with online resources. You'll also have authentic and supported learning opportunities with live-in wānanga (language workshops) held at our fully equipped whare. These immersive experiences will normalise language use and equip you to use the language you learn to enrich everyday life, add value to your workplace, bring te reo into your home, or enhance your career opportunities.

Te Pōkaitahi Reo (Reo Rua) (Te Kaupae 4) - Advanced Elementary



Level 4



Christchurch



Full-time: 19 weeks
Part-time: one year



February, July*

Take your te reo journey to the next level.

If you'd like to develop your skills and knowledge to communicate independently in familiar and not-so-familiar aspects of te ao Māori, this is the programme for you.

You'll gain language skills and knowledge that will provide you with a broad understanding of how the language is connected to the land, environment, prominent places, people, histories and stories. You'll also extend your understanding and application of knowledge in varying contexts and begin to develop your independent production of the language.

Culturally immersive experiences at marae during your studies will provide you with authentic, meaningful engagement with local Māori communities.

**February - part-time; July - full-time*



Te Pōkaitahi Reo (Rumaki) (Te Kaupae 5) - Intermediate



Level 5



Christchurch



Full-time: 19 weeks
Part-time: one year



February

Gain te reo skills for the workplace and the Māori-speaking community.

With a focus on developing skills that enable you to use te reo at home, in the workplace, on the marae and in various other contexts, this programme will take your reo skills to the next level.

You'll establish strategies to understand increasingly complex language patterns and develop your ability to engage and speak with growing confidence in te reo. You'll develop your language skills through face-to-face interactive classes, online resources and activities, live-in wānanga (language workshops) and possibly haerenga (trips) to local landmarks.

Live-in wānanga provide opportunities to use te reo in authentic, culturally rich settings and to practice fulfilling a range of roles in various, safe, simulated contexts.



Te Pōkaitahi Reo (Rumaki) (Te Kaupae 6) – Upper Intermediate



Level 6



Christchurch



Full-time: 19 weeks
Part-time: one year



February, July*

Make an impact at work, at home and in the community with advanced te reo skills.

Designed to help you make an impact and realise your unique potential, this full immersion programme will equip you to be marae ready and work ready. It will also give you a distinct advantage in today's competitive employment market.

You'll have the opportunity to develop complex language patterns, apply your acquired language in various familiar and unfamiliar contexts and communicate effectively and creatively in the changing work environment.

You'll also develop your language skills through face-to-face interactive classes, online resources and activities, wānanga (language workshops) and possibly also haerenga (trips) to local landmarks.

**February - part-time; July - full-time*



"Being able to learn Māori cultural context was life changing."

Tania, Māori Language

Visit ara.ac.nz for all entry requirements and fee information.



Level



Location



Duration



Starts

Sustainability and Outdoor Education

Nurture, sustain and lead the way with a rewarding, future-focused career.

Appreciation for our natural environment—and the desire to explore and protect it—has never been greater. As a professional in this sector, you can lead and guide adventure seekers, foster conservation efforts and work towards a more sustainable future for the environment and society.

Our highly practical outdoor education and sustainability programmes will prepare you for meaningful work in a variety of areas from instruction to conservation. You'll connect and immerse yourself in the environment and culture and be empowered to decide your career direction. You'll also be encouraged and challenged in areas such as critical thinking, problem solving, people management and creativity. As a result, you'll enhance your adaptability and equip yourself to lead and help others in a rapidly changing world.



Scan to learn more about our Sustainability and Outdoor Education courses



Still at school?

Check out our Dual Enrolment outdoor education study options on page 15



New Zealand Certificate in Outdoor and Adventure Education (Multi-skilled)



Level 4



Christchurch



Full-time: one year
Part-time: up to three years



February, July

Learn how to lead others confidently in outdoor pursuits.

Taught by some of the most qualified educators and instructors in the country, this programme will give you skills to participate in and lead a range of outdoor activities under supervision in low-risk outdoor environments. It covers adventure leadership, performance and health, kaitiakitanga and environmental education, sea kayaking, rock climbing, bush walking and two leadership-themed pathways in mountain biking and bush environments.

You'll learn about equipment, weather, local conditions, logistics and safety management, leadership theories, sustainability, performance, and cultural and environmental respect.



New Zealand Diploma in Outdoor and Adventure Education (Multi-skilled)



Level 5



Christchurch



Full-time: one year
Part-time: up to three years



February

Prepare for an adventurous career in the outdoors.

This programme has been designed to equip you with the skills and knowledge the industry requires to meet increasing demand for outdoor leaders and guides, and to prepare you for a varied, rewarding and adventurous career.

You'll learn through a mix of group tutorials, practical outdoor activities, field trips, online learning and work-integrated experiences. Taught by some of the most qualified educators and instructors in the country, you'll gain skills in leadership, sustainability and environmental education, supervision and instruction.

You'll also become technically competent in a range of outdoor pursuits including sea kayaking, rock climbing, bush walking and mountain biking, and learn how to plan, prepare, instruct and guide participants in a range of outdoor activities while maintaining safe, ethical and professional practice.



"It's a different way of learning and it's great."

Arthur, Sustainability and Outdoor Education

Bachelor of Sustainability and Outdoor Education



Level 7



Christchurch



Full-time: three years
Part-time: available



February, July

Become an emerging leader in sustainability and outdoor education.

This is the only outdoor education degree in New Zealand that includes sustainability as a major component. It provides a unique combination of theory and practice to ensure you graduate with a sound understanding of contemporary social and cultural issues, geography and sustainability, and a proven capability in outdoor education. It's a broad degree that allows you to tailor your learning to meet the needs of a variety of career aspirations including teaching, conservation, outdoor instruction and guiding.

During your studies, you'll engage with the natural landscape to develop an in-depth understanding of sustainability, and what it means to our society now and for the future. You'll explore flora and fauna and consider social geography with the human influences and impacts on our environment including how decisions on land use are made. You'll also develop your inter-personal skills and learn effective methods for teaching, guiding and helping people engage with and respect our spectacular natural environment.

Essential studies include health and wellness, geography, environmental science, professional practices, leadership and safety. These are mixed with elective theory and practical courses to foster your personal strengths and interests.



Visit ara.ac.nz for all entry requirements and fee information.



Level



Location



Duration



Starts

Graduate Diploma in Sustainability and Outdoor Education



Level 7



Christchurch, online



Full-time: 18 months
Part-time: up to four years



February, July

Advance your professional development in sustainability and outdoor education.

This programme combines theory and practice for advanced professional development and is ideal for established teachers, outdoor educators and instructors or as a retraining opportunity for graduates of other degrees.

You'll learn about journey-based environmental science, contemporary issues in sustainability and outdoor education, resource management and how to implement sustainable practice.

The broad base of your studies will be complemented by elective practical and theory courses to develop your personal interests and strengths.



Postgraduate Certificate in Sustainable Practice



Level 8



Christchurch, online



Full-time: six months
Part-time: up to 18 months



February

Gain foundational knowledge and specialist skills in sustainable practice.

If you have an interest in sustainable practice and you'd like to develop higher-level understanding and specialist skills from your undergraduate degree, this is an ideal step into postgraduate study.

The programme will equip you with core foundational knowledge about the theories, driving forces and worldviews (including Te Ao Māori) related to sustainable practice. As part of your studies, you'll apply your knowledge to specific contexts that will show how interdisciplinary frameworks and research can help address complex sustainability problems.

Postgraduate Diploma in Sustainable Practice



Level 8



Christchurch, online



Full-time: one year
Part-time: up to three years



February, July

Acquire the knowledge and skills needed to be a change-maker in sustainability.

This unique programme is designed for individuals seeking an in-depth professional development opportunity to become an agent for change in sustainable practice.

It will enable you to explore sustainable practice through a focus on relationships between policy and practice, research and multi-disciplinary project work. You'll also develop and apply advanced understandings of the theories, driving forces and worldviews (including Te Ao Māori) that relate to sustainable practice within the context of your discipline-specific knowledge.

Upon completion you'll be able to advocate for, and contribute to, more sustainable practices in a range of contexts.



Master of Sustainable Practice



Level 9



Christchurch, online



Full-time: 18 months
Part-time: up to four years



February, July

Become a leader in sustainable practice.

The Master of Sustainable Practice is designed for individuals seeking to lead innovative problem solving in sustainable practice. It culminates with a 60-credit applied research dissertation.

Across the range of core, project and applied research components, you'll gain advanced interdisciplinary skills and knowledge that will enable you to: critically evaluate and apply concepts of sustainable practice; work independently and collaboratively; become a change-maker contributing to sustainable practice. You'll also develop and apply advanced understandings of the theories, driving forces and worldviews (including Te Ao Māori) related to sustainable practice within the context of your discipline-specific knowledge.

The programme facilitates collaboration and innovation and applies an interdisciplinary framework to address complex sustainability problems. Upon completion you'll be able to: advocate for, and lead change towards, more sustainable practices; apply high level research skills to plan and conduct independent inquiry projects related to sustainability in professional contexts; and be an independent learner who can utilise and undertake research to formulate solutions to sustainability issues.



Visit ara.ac.nz for all entry requirements and fee information.



Level



Location



Duration



Starts

Trades

Ara-ā-rehe



Dual Enrolment

Learn with us while you're still at school.

If you're in Years 11 to 13 at secondary school, Dual Enrolment courses are a way to experience tertiary study while still at school. You spend a day or two at Ara and the rest of the week at school. It's a great opportunity to earn NCEA credits and get a head start in a subject you want to study when you leave school.



Scan to learn more about our Dual Enrolment courses

Dual Enrolment



Level 1 – 3



Christchurch, Timaru



Part-time: one year



February

We offer the following Dual Enrolment courses in:

- Carpentry Level 3 (2-day)
- Introduction to Agricultural Engineering Level 2 (1-day) *(Timaru only)*
- Introduction to Automotive Level 2 (1-day)
- Introduction to Automotive and Autobody Level 2 (2-day)
- Introduction to Construction Trades Level 2 (1 and 2-day)
- Introduction to Electrical Engineering Level 2 (2-day)
- Introduction to Engineering Trades Level 2 (1-day)
- Introduction to Plumbing Level 2 (2-day)

Foundation Trades

Discover your path with a free course.



Scan to learn more about our Foundation Trades course

Trades Primer



Level 2



Christchurch, Timaru



Full-time: 19 weeks



February*, July

This free course is a great way to experience a variety of trades so you can make an informed decision about your next step.

It covers machining, fabrication, welding, automotive, autobody, carpentry, joinery, painting and decorating, electrical, plumbing, gas fitting and drain laying. You'll learn about each of these trades and participate in hands-on activities. You'll also gain foundation skills – including literacy, numeracy and communication – that will support you into further study or the workplace.

By completing this programme you'll gain Ara credits which you can use towards further tertiary study in New Zealand.

**Christchurch only*

Visit ara.ac.nz for all entry requirements and fee information.

Automotive Trades

Get skills for a career in one of the largest industries in the world.

If cars, trucks and vehicles are your thing and you have your sights set on a career in the automotive industry, we can prepare you for that goal with a range of hands-on automotive study options. Your chosen programme will give you a comprehensive understanding of how vehicles work and equip you with the skills and knowledge needed to fix them and fine tune them when they don't.



Scan to learn more about our Automotive Trades courses

New Zealand Certificate in Automotive Engineering



Level 3



Christchurch, Timaru



Full-time: one year
Part-time 18 months*



January, February^, August*

Get your career in automotive engineering off to the best start.

This automotive qualification is designed to give you all the fundamental knowledge required to work in the industry. This is achieved through a combination of the theoretical knowledge and practical hands-on tasks similar to the daily tasks undertaken in the workplace.

This course is free to eligible applicants via He Toki Māori Trades Training / Pacific Trades Training. Limited places are available for this funding.

^February intake only available in Timaru

**August intake only available in Christchurch*



Still at school?

Check out our Dual Enrolment automotive trades study options on page 15



New Zealand Certificate in Collision Repair and Automotive Refinishing



Level 3



Christchurch



Full-time: six months then
part-time one year



February, July

Equip yourself with skills for a career in the automotive collision repair and refinishing industry.

Through a combination of theoretical knowledge and practical hands-on tasks similar to those undertaken every day in the industry, this qualification is designed to give you the essential knowledge required for employment.

It will equip you with fundamental collision repair knowledge, enabling you to remove and replace vehicle components to assist with collision repair. You'll also gain automotive refinishing knowledge so that you can repair minor damage and prepare vehicle components for refinishing work.

This course is free to eligible applicants via He Toki Māori Trades Training / Pacific Trades Training. Limited places are available for this funding.



New Zealand Certificate in Light Automotive Engineering Level 4



Level 4



Christchurch



Part-time: up to three years



Throughout the year

Equip yourself with the in-depth skills needed to work as an auto technician.

If you're already employed as an apprentice, this programme will provide you with the skills and knowledge required to undertake diagnostics and complex repair work at an intermediate to advanced level. It also covers the areas of customer interaction, scheduling work and completing quotations for jobs.



"It covered every base before entering the workforce."

Dana, Automotive Engineering

Visit ara.ac.nz for all entry requirements and fee information.

Carpentry and Joinery

Channel your love for making things into a rewarding career.

Carpenters build our buildings. Joiners make the doors, stairs, cabinetry and furniture that fills them. If you have an eye for detail, a love of working with timber and other materials and you enjoy using tools and machinery, you're already on the path to a career that offers plenty of variety and opportunities.

At Ara you can learn the basics of carpentry and joinery, then progress on to more complex projects as your skill levels increase.



Scan to learn more about our
Carpentry and Joinery courses

New Zealand Certificate in Construction Trade Skills (Carpentry)



Level 3



Christchurch, Timaru



Full-time: one year



February, May*, August*

Learn in-demand carpentry skills and gain experience on real construction projects.

Highly practical and hands-on, this study option will equip you with a wide range of fundamental carpentry skills, in preparation for an apprenticeship.

You'll learn about materials and tools, machines and timber, techniques, measuring and calculations. You'll also learn about safety procedures and workplace etiquette, plus the construction of single and two storey residential buildings and light commercial buildings.

This course is free to eligible applicants via He Toki Māori Trades Training / Pacific Trades Training. Limited places are available for this funding.

**Christchurch only*



Still at school?

Check out our Dual Enrolment carpentry study options on page 15



New Zealand Certificate in Construction Trade Skills (Joinery)



Level 3



Christchurch



Full-time: nine months



February, July

Develop the joinery skills needed for employment or a traineeship.

On this highly practical programme you'll learn basic joinery skills such as using tools and fixed machinery, selection and properties of materials including timbers, fixings, adhesives and sealants, and how to produce internal architecture and fixed objects within buildings. You'll also gain an understanding of the theory, calculations and documentation skills required in this industry, and be ready to start a traineeship.

This course is free to eligible applicants via He Toki Māori Trades Training / Pacific Trades Training. Limited places are available for this funding.



New Zealand Certificate in Carpentry (Apprenticeship)



Level 4



Christchurch, Timaru



Part-time: four years



All year

Grow your carpentry and organisational skills, on the job.

This programme is designed for individuals already working in the industry and is typically achieved in a workplace environment while completing an apprenticeship. You'll gain the practical skills and knowledge required to construct, repair and install building structures to the level required of a commercially competent carpenter.



New Zealand Certificate in Joinery (Apprenticeship)



Level 4



Christchurch



Part-time: four years



All year

Extend your joinery expertise to suit your employment circumstances.

Designed for individuals already working in the industry, this programme is typically achieved in a workplace environment while completing an apprenticeship. It's available in four specialisations: cabinetry; timber doors and windows; timber stairs; and laminate fabrication. Depending on your employment circumstances and career aspirations, you can choose one strand, or all four strands if you wish to attain 'craftsman' certification.



"There's lots of care and support provided."

Tony, Construction Trade Skills

Visit ara.ac.nz for all entry requirements and fee information.



Level



Location



Duration



Starts

Electrical Trades

Light the way to a rewarding career by gaining in-demand electrical skills.

From the source of power generation through to the multiple end uses of the network, electricity powers our lives in all manner of ways.

If electricity sparks your interest, there are numerous pathways you can take towards a successful and varied career in the electrical industry. At Ara you'll learn from expert tutors with years of experience and be ready to contribute your skills to creating, distributing and maintaining this essential part of everyday life.



Scan to learn more about our
Electrical Trades courses



Still at school?

Check out our Dual Enrolment electrical trades study options on page 15



New Zealand Certificate in Electrical Engineering (Theory) Level 3



Level 3



Christchurch, Timaru



Full-time: one year



Various

Gain the knowledge and skills required to start an apprenticeship in the electrical industry.

If you don't yet have an electrical apprenticeship agreement, this programme will prepare you for one by equipping you with pre-entry foundation knowledge of electrical engineering.

You'll learn about the electrical industry with an introduction to safe electrical installation practices, testing, commissioning and servicing of electrical installations and equipment.

You'll also learn about fault diagnosis and testing techniques of electrical systems and equipment, and about the installation and maintenance of electrical machines in special electrical situations.

This course is free to eligible applicants via He Toki Māori Trades Training / Pacific Trades Training. Limited places are available for this funding.



Level



Location



Duration



Starts

Engineering Trades

Forge a career making machinery, tools and structural components.

New Zealand engineers are renowned for being resourceful, highly capable and creative in the manufacturing of engineered products.

From making small precision engineered tooling through to massive steel structures, there's a huge range of career options open to you when you choose an engineering trades pathway. At Ara you'll learn the skills and knowledge required to use a range of hand tools, machinery and equipment in a modern engineering workshop environment.



Scan to learn more about our
Engineering Trades courses



New Zealand Certificate in Mechanical Engineering



Level 3



Christchurch, Timaru



Full-time: one year



February, July*

Get hands-on skills to start your career in mechanical engineering.

Highly practical, this programme covers welding, fabrication, machining, fitting and maintenance, along with embedded safety, drawing, trade theory, calculations and communication skills. It also includes a series of trade-relevant engineering projects.

This course is free to eligible applicants via He Toki Māori Trades Training / Pacific Trades Training. Limited places are available for this funding.

**July intake only available in Christchurch*



Still at school?

Check out our Dual Enrolment engineering trades study options on page 15

Visit ara.ac.nz for all entry requirements and fee information.

New Zealand Certificate in Mechanical Engineering (Apprenticeship)



Level 4



Christchurch, Timaru



Part-time: four years



All year

Gain the technical and problem-solving skills needed for various mechanical engineering environments.

Designed for individuals who are working in the industry, this programme is typically achieved in a workplace environment while completing an apprenticeship. It's available in the following strands: Fitting and Machining; General Engineering; Machining; Maintenance Engineering; Toolmaking.

You'll learn how to interpret drawings and specifications, and how to select and use the appropriate materials, tools, equipment and processes for the mechanical engineering task being undertaken. You'll also learn how to work safely and meet workplace health and safety requirements.

New Zealand Certificate in Engineering Fabrication (Apprenticeship)



Level 4



Christchurch, Timaru



Part-time: four years



All year

Increase your skills in engineering fabrication.

This programme is designed for individuals who are working in the industry and is typically achieved in a workplace environment while completing an apprenticeship. It's available in the following strands: Heavy Fabrication; Light Fabrication; Steel Construction.

In addition to learning specific skills in your chosen area, you'll learn how to interpret drawings and specifications, and how to select and use the appropriate fabrication materials, tools and equipment to create industry-standard projects. You'll also learn how to apply knowledge of welding at an industry standard in a commercial environment. Health and safety and workplace safety culture are also covered.



Painting and Decorating

Make a career out of adding the finishing touches to exterior and interior spaces.

Our painting and decorating courses will equip you with the knowledge, practical skills and attention to detail needed to gain a firm foothold in the industry. You'll learn theory and techniques from our expert tutors and get plenty of opportunity to practice your new skills with hands-on tasks and projects.



Scan to learn more about our
Painting and Decorating courses



New Zealand Certificate in Construction Trade Skills (Painting and Decorating)



Level 3



Christchurch, Timaru



Full-time: six months



Christchurch: Feb, July
Timaru: Feb

Gain essential skills to start your career in painting and decorating.

Highly practical and hands-on, this study option will equip you with fundamental skills in painting and decorating, in preparation for an apprenticeship. You'll learn about surface preparation; application techniques for brushing, rolling spraying and wallpapering; the correct use of materials; industrial safety; and simple measuring and quality techniques.



Visit ara.ac.nz for all entry requirements and fee information.

Plumbing, Gasfitting and Drainlaying

Equip yourself with sought-after skills for a solid career in trades.

Our plumbing, gasfitting and drainlaying programmes are designed to prepare you for employment in one of the many professional teams that keep our taps running, our drains draining and our gas appliances working effectively and safely.

Using tools and equipment of the trade, you'll develop a wide range of skills in a team environment that will enable you to plan, build, install, fix and maintain these vital services.



Scan to learn more about our Plumbing, Gasfitting and Drainlaying courses

New Zealand Certificate in Plumbing, Gasfitting and Drainlaying



Level 3



Christchurch



Full-time: 23 weeks



January, June

Gain all the fundamental skills needed to begin a career in plumbing, gasfitting or drainlaying.

This course will teach you about the process of assembling, installing and repairing pipes, how to use plumbing, gasfitting and drainlaying drawings and how to fabricate basic components. You'll also apply health and safety requirements in plumbing, gasfitting and drainlaying contexts and gain experience using appropriate safety equipment.

This course is free to eligible applicants via He Toki Māori Trades Training / Pacific Trades Training. Limited places are available for this funding.



Still at school?

Check out our Dual Enrolment plumbing study options on page 15



Study options at a glance

Subjects you can study in Christchurch

Animal management
Architectural studies
Art and design
Automotive trades
Baking/patisserie
Barbering
Beauty therapy
Broadcasting
Business
Carpentry
Cookery
Construction management
Cybersecurity
Early childhood education
Electrical trades
Engineering
Engineering trades
English
Fashion
Hairdressing
Health and wellbeing
Health practice/health science*
Health promotion
Hospitality/hospitality management
Human nutrition
Information technology
Interior design
Joinery
Laboratory technology
Massage therapy
Māori language and culture
Medical imaging
Midwifery
Music
Music theatre
Nursing
Osteopathy
Outdoor education
Painting and decorating
Plumbing, gasfitting and drainlaying
Primary industry business management*
Professional supervision*
Quantity surveying
Social work
Sport and exercise science/exercise
Sustainability/sustainable practice
Teaching
Tourism
Veterinary nursing
Web development and design

Plus:

Dual Enrolment, Youth Guarantee, Foundation and Supported Learning courses
Computing for Free courses at Ara Connect
Next Step Centre for Women courses
Personal and professional short courses



Subjects you can study in Timaru

Accounting support services
Art and design
Automotive trades
Beauty therapy
Carpentry
Cookery
Early childhood education
Electrical trades
Engineering trades
English
Hairdressing
Health and wellbeing
Health practice/health science*
Hospitality
Information Technology
Māori language and culture
Midwifery*
Nursing*
Outdoor education*
Painting and decorating
Primary industry business management*
Professional supervision*
Sustainability/sustainable practice*
Teaching*

Plus:

Dual Enrolment courses
Youth Guarantee courses
Foundation courses
Computing for Free courses at Ara Connect

**online or online/blended*

General information

Kōrero Whānui





Student support and student life

We're committed to providing the support you need to be successful in your studies and to enjoy your time at Ara. You can find out more about the services and facilities listed below on our website.

Accommodation

Ōtautahi House is located directly opposite our Christchurch City campus. It has 36 furnished apartments accommodating up to 192 students and includes two fully accessible apartments. There's a live-in manager, support staff and emergency on-call staff. Ōtautahi House is close to shops, cafes, convenient public transport, parks and recreation.

Cafés on campus

Our City, Woolston, Manawa and Timaru campuses each have at least one café on site where students, staff and the public can get a coffee, grab a quick bite to eat or enjoy lunch. The City and Timaru campuses also have student-run cafes and restaurants offering great-value food, made and served by our cookery, bakery and hospitality students.





Careers and Employment

Our Careers and Employment team provides free advice to current and prospective students as well as graduates. They can help you to explore your career options, develop your employability and put your best foot forward when searching and applying for jobs.

Childcare

Quality care and education for children up to the age of five is available at our Christchurch City campus. There are two options: Ara Early Learning Centre and Te Waka Huruhrumanu ki Ōtautahi.

Counselling

Free, confidential counselling is available to all Ara students for any reason – from stress or course concerns to relationship difficulties, personal issues or anything else that might be worrying you.

Disability Services

If you have any kind of disability, our Disability Services team is available to help make study work for you. They provide a wide range of services and equipment, from note takers and exam reader/writers to course materials in alternative formats and specialised equipment, furniture and software.



Groups and clubs

Got a special interest? Our student groups and clubs are a great way to make friends with fellow like-minded students while doing something you enjoy. You can join an existing group – such as gaming, tramping, Rainbow, Japan club, poetry club or a faith group – or start your own with support from our student groups advisor.

Hairdressing, barbering, beauty, massage and osteopathy

Our hairdressing, barbering, beauty therapy, massage therapy and osteopathy students provide affordable, supervised services to students and the public in salon and clinic environments on campus. Occasionally, these services are available at no cost.

Health and wellbeing

We offer a range of services and facilities aimed at helping you enjoy good health and wellbeing while studying with us. These include gym and recreation facilities, a health centre with GP and nurses, counselling, a nutrition clinic, an osteopathic clinic and fitness testing.





Learning Services

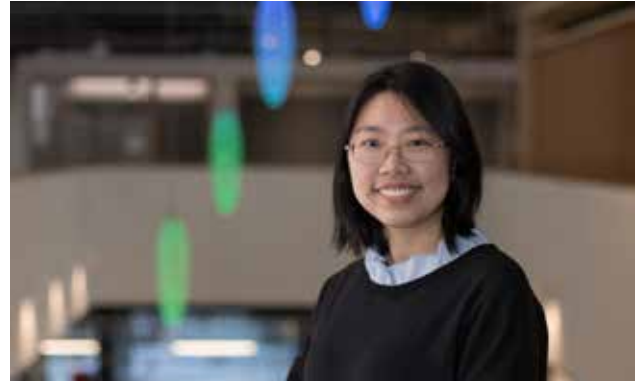
Our Learning Services team is dedicated to supporting you to complete your coursework successfully. They offer a broad range of study and support resources, plus group study opportunities, academic workshops and quick question sessions.

Library

Our libraries provide an extensive range of services and resources to support learning, teaching and research. Physical libraries are located at the City, Woolston and Timaru campuses and all resources are available online through Library Search. Librarian support is available in person and via phone, email, live chat and Zoom.

Māori student support

Our Māori engagement advisors, learning advisors and student support advisors are focused on helping Māori students succeed. There are many kaupapa Māori events too, such as daily karakia, whakatau and end-of-year celebrations recognising Māori student participation and achievement. We also welcome the community into our unique Te Puna Wānaka whare at the City campus which regularly hosts hui, wānanga and fono. Everyone is welcome to visit and connect with our growing Māori team.



Pacific student support

If you're a Pacific student, you can access targeted study and support options designed to enhance your experience and study success. These include scholarships, Pacific peer mentoring, Pacific peer tutoring and Cultural Home which aims to build a relationship between you, your family and Ara.

Recreation and sport

A healthy body can help create a healthy mind. At the City campus you can become a member of our modern, well-equipped gym, take part in group fitness classes, participate in social sports or – if you're a more serious athlete – use our state-of-the-art facilities at The Zone to understand your fitness to improve your results. In Timaru, you can join the gym or challenge yourself on the purpose-built climbing wall. Deals and promotions are often available for these services and facilities.

Refugee and Migrant support

If you're a migrant or former refugee student, our dedicated advisor can provide advice and help with pre-enrolment support, StudyLink, Work and Income (WINZ), scholarship applications, study issues, financial assistance options, housing-related issues and much more.





Scholarships and Financial Assistance

Scholarships can save you thousands of dollars in fees and living expenses. We have many to offer and we encourage you to apply when you apply for your programme of study. If you encounter financial hardship during your studies, we have several funds you can apply to.

Student advocacy

If you're having personal difficulties – either at or outside Ara – which are affecting your study, our independent student advocate can support you and help you to problem solve. This free, confidential service covers everything from relationship issues with staff or fellow students through to helping you address challenges involving alcohol, drugs, family violence, housing and mental health.

Student events

Student life is never dull, with events occurring on campus throughout the year. These range from orientation and cultural events through to student-produced musicals, concerts and exhibitions.



Our campuses

There are six Ara campuses throughout Canterbury offering a variety of courses and facilities. You can view maps of each campus on our website.

City (Christchurch)

The City campus on Madras Street is our biggest campus. It's where the largest number of our study options are taught, and where you can access a comprehensive range of services and facilities to enhance your student experience.

These include:

- Food and beverage options (including a café and restaurant operated by food and hospitality students)
- Health centre with doctors, nurses, physio and counsellors
- Gym
- Recreation centre with sports court
- Te Puna Wānaka (whare)
- Library
- 24-hour computing suites
- Career advice and planning
- Childcare centres
- Student accommodation
- Learning services
- Student support advisors (including Māori, Pacific and international student advisors)
- Disability support services
- Student advocacy

It also has a theatre where performances are staged, spaces where exhibitions of student work are held and attractive outdoor areas where you can meet and relax with friends between classes.



The City campus is located on the edge of Christchurch's central business district, close to cafes, restaurants, supermarkets, public transport, shops and entertainment. It's also not far from Hagley Park, the botanic gardens, the Christchurch Art Gallery, Tūranga (the city's impressive new library) and exciting precincts like Riverside and Little High.

Woolston (Christchurch)

The Woolston campus is dedicated to trades training. It has extensive facilities for construction, automotive and engineering-related trades, including industry-standard equipment and real-world learning spaces.

Student services at Woolston include:

- Café
- Library
- Student support office
- Learning services
- Health nurse

The campus is located in eastern Christchurch and has good transport links and parking on site. If you're studying at Woolston, you can access a full range of student services at the City campus.



Manawa (Christchurch)

Manawa is where our nursing, midwifery and medical imaging students are based. Located opposite Christchurch Public Hospital, Manawa is also home to University of Canterbury researchers and health professionals from Te Whatu Ora.

Purpose designed, it features several high-tech simulation rooms to provide students with real-world learning experiences.

Student services at Manawa include:

- Admissions and enrolments
- International enrolments and international student support
- Learning services
- Library support
- Career advice and planning
- Wellbeing events
- Student group activities
- Student advocacy
- Bike lock-up
- Café

Manawa is on several bus routes and is just a short walk from shops, cafes, parks and other attractions in the CBD. If you're based at Manawa, you can access a full range of student services at the City campus.



Timaru

Our Timaru campus is located just a short stroll from the city's CBD and features modern facilities and a range of services for students.

These include:

- Food and beverage options (including a cafe and restaurant operated by food and hospitality students)
- Gym, recreation centre and indoor climbing wall
- Counsellor
- Library
- Career advice and planning
- Learning services
- Student support advisors
- Disability support services

The campus is within walking distance of Timaru's main shopping street, supermarkets, cafes, a movie theatre and the city's public library. The countryside surrounding Timaru offers an amazing range of leisure, cultural, sporting and adventure opportunities.

If you live between Ashburton and Timaru, or Oamaru and Timaru, you can use our free weekday shuttle service to get to and from the Timaru campus.



Ashburton

Our campus in Ashburton is located west of the town centre, within walking distance of the main shopping area, department stores, supermarkets and recreational facilities.

A student support advisor is based at the Ashburton campus, and other support services can be accessed via the City or Timaru campuses.

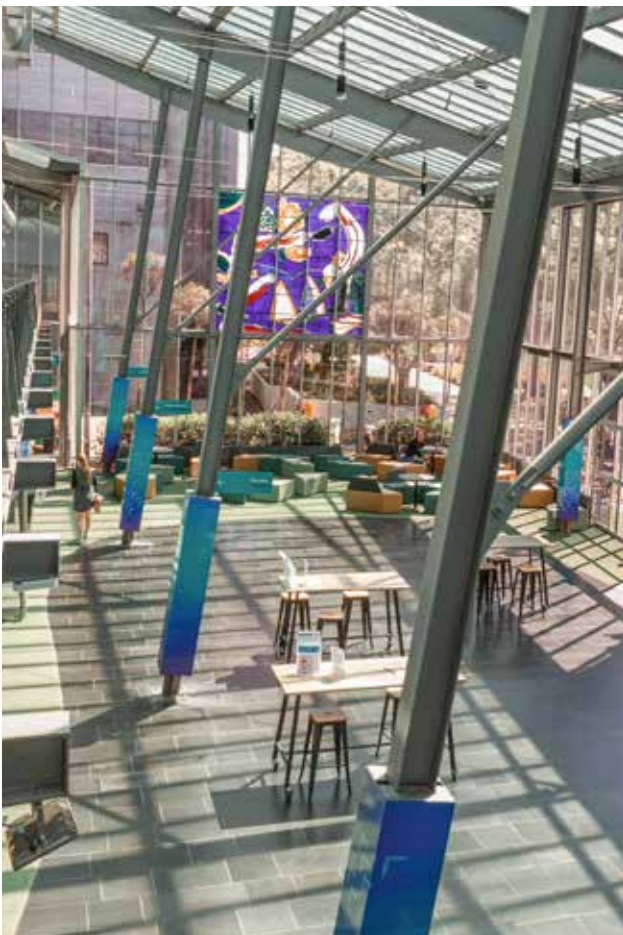
Ashburton is a great place for recreational pursuits with ski fields, lakes and reserves within easy reach.

Oamaru

Our Oamaru campus is centrally located just a block east of the town's main thoroughfare, Thames Street. It's a short walk from the main shopping area, supermarkets, department stores, cafes and historic precinct.

A student support advisor is based at the Oamaru campus, and other support services can be accessed via the City or Timaru campuses.

Oamaru is a friendly coastal town which is famous for its beautiful Victorian-era stone buildings and thriving steam punk scene.



Come check us out!

Get a feel for what it's like to study with us on a guided campus tour.

Book your tour at:
ara.ac.nz/book-a-tour

How to apply

Applying online

Once you've decided which programme you want to study, go to that programme's page on our website and look for the 'Apply Now' button. This will open a form specifically for that programme. You can save as you go and return to it later. When you finish, simply click 'Submit' and we'll start processing your application.

Applying using a hard copy application form

Printed application forms are available at all Ara campuses. Alternatively, you can download a PDF at ara.ac.nz/apply to print. Once you've completed your application form, drop it in to your nearest Ara campus or mail it to:

Ara Enrolment Centre
PO Box 540
Christchurch Mail Centre
Christchurch 8140
New Zealand

If you have any questions about the application and enrolment process, call us on 0800 24 24 76.

Open days

To explore study options, attend info sessions, meet tutors and check out our campus facilities, come along to one of our open days, held in January and June each year. See the website for dates, times and locations.

Campus tours

A guided campus tour is a great way to see Ara in action and get a feel for what it's like to study with us. To request a tour, go to ara.ac.nz/book-a-tour.



**Come and see us at one
of our main engagement
events in 2025/2026.**

Christchurch Careers Expo 2025

Wolfbrook Arena, Addington

May

June Open Day 2025

All Christchurch & Timaru campuses

June

Summer Open Day 2026

City, Woolston and Timaru campuses

January

For details see

ara.ac.nz

Apply now

ara.ac.nz

info@ara.ac.nz

0800 24 24 76

City campus

130 Madras Street, Christchurch
Mon–Fri, 8am–4.30pm

Manawa campus

276 Antigua Street, Christchurch
Mon–Fri, 8.30am–4.30pm

Woolston campus

Ensors Road, Christchurch
Mon–Fri, 8am–4.30pm

Timaru campus

32 Arthur Street, Timaru
Mon–Fri 8am–4.30pm

Ashburton campus

37 Alford Forest Road, Ashburton
Mon–Fri, 8.30am–4.30pm

Oamaru campus

44 Humber Street, Oamaru
Mon–Fri, 8am–4.30pm

Ara Connect

City campus, Madras Street, Christchurch
Timaru Campus, 32 Arthur Street, Timaru
Woolston Campus, Ensors Road, Christchurch

