

FutureSkills™



START YOUR TOMORROW TODAY

International
Prospectus

01	Haere mai and welcome
02	Our values
03	Why study with us?
04	Studying in New Zealand
07	Our campuses
09	Study options
10	Business
18	Construction
22	Information Technology
26	Student services
28	Careers

Get in touch

0800 550 410

+64 9 263 0302

international@futureskills.co.nz

www.futureskills.co.nz

This programme guide is for international students only. If you are a domestic student who would like more information, please contact us by email at info@futureskills.co.nz or phone us on 09 309 0301.



Haere mai and welcome to Future Skills

Welcome to Future Skills, a leading Category 1 private education provider in Auckland, registered with the New Zealand Qualifications Authority. Founded by Group CEO Sam Alavi in South Auckland in 2000, Future Skills opened its doors the following year.

Future Skills is a trusted training provider offering future-focused programmes in industries facing skill shortages. Our team is driven to improve the quality of people's lives through education. Our programmes help people of all ages take the next step to advance their education and land their dream job.

Future Skills boasts four campuses in Manukau, Royal Oak, Takapuna and Auckland City, home to an international campus. Our students thrive in the institute's warm and encouraging classrooms, guided by passionate, motivated lecturers.

Our work placements connect learners to their chosen industry, often leading to permanent employment.

Dedicated staff work diligently to deliver top-quality education and to develop students into high-performing graduates. Your success is our success. We look forward to welcoming you.

"If you want a career you can really be proud of, you've come to the right place. At Future Skills, we specialise in getting our students trained and employed in today's booming industries."

SAM ALAVI
Group CEO



OUR VALUES

We exist to cultivate the most employable, most empowered graduates. But it's not just about learning or getting a job, it's about finding yourself, your place in the world, and your part to play. We've figured out that if you look after the whole person, not just their study, there's a better chance they will flourish. You can expect a strong sense of belonging, respect for difference, and connection here.

Whakamana - Empowerment

1. Recognise individual potential

Everyone is unique and talented and has the potential, capacity and aptitude to succeed and develop skills and attributes for the wellbeing of themselves and the community.

2. Develop the whole person

The physical, emotional, social, spiritual, and intellectual needs and interests of each person are inseparable and equally important.

Whakaute - Respect

3. Honour and respect the individual

Everyone is a unique individual and is worthy of respect, fairness, honesty and openness.

4. Practise sustainability

We recognise the need for a sustainable future, where economic, social and environmental dimensions are in balance.

Whakawhanaungatanga - Connection

5. Foster personal and group responsibility

People have a duty to themselves as well as to their communities and are responsible for their choices and actions both individually and collectively.

6. Embrace and serve the community

Our relationships with our stakeholders and community are an integral part of our success.

Whakapiki - Growth

7. Contribute to life-long learning

Education is a continuous and creative process which enriches the individual and communities.

Whakanuia - Celebration

8. Celebrate achievement

We are committed to the well-being and celebrate the success of every student and staff member.



WHY STUDY WITH US?

We're a Category 1 provider, and our systems, processes and campuses are all purpose-designed to help make our students shine. Our qualifications are all NZQA recognised. We believe in growing confident, capable people who go on to contribute to their communities.

Four unique Auckland campuses

Category One Provider (NZQA accredited)

Industry-relevant programmes

Exceptional student support



STUDYING IN NEW ZEALAND

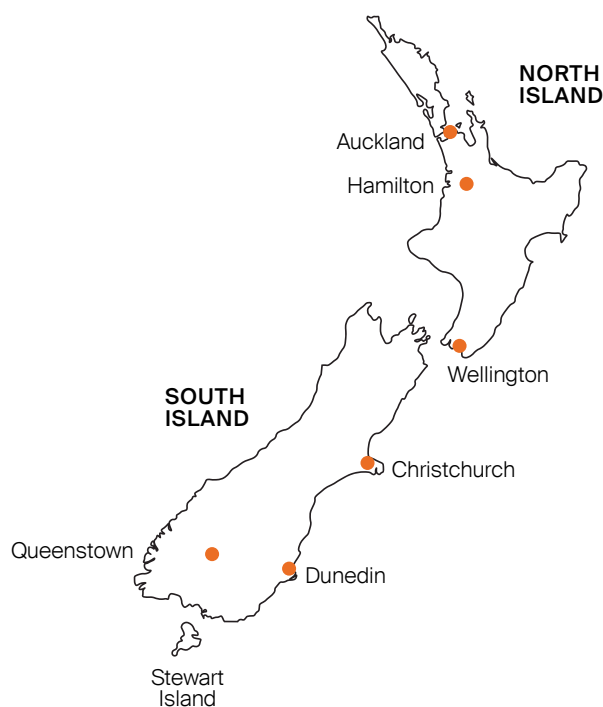
Each year, thousands of students come to beautiful New Zealand for a high quality education in a safe, multicultural environment. New Zealand has a population of 5.3 million people, and is one of the least crowded countries in the world. Here, you can enjoy your studies and experience a fun, friendly and easy going lifestyle.

New Zealand

Our country is known for its stunning natural scenery, including beautiful mountains, lakes, beaches and forests. New Zealanders – often referred to as Kiwi – are down-to-earth and friendly. Our lifestyle is relaxed, and many of us have a passion for the outdoors.

With a history of Māori, European, Pacific Island and Asian cultures, New Zealand has a multicultural population. More than three-quarters of New Zealanders live in the North Island. Auckland is the biggest city, while the other main cities include Hamilton, Wellington, Christchurch and Dunedin.

There are many things to experience here, including unique nature and wildlife, adventure tourism, arts and culture, sporting events and thriving cities. Go to tourismnewzealand.com for more.



5.3 million people

4th safest country in the world*

*Global Peace Index, 2023



Māori culture

Māori are the tangata whenua (indigenous people) of Aotearoa New Zealand. Māori culture, including its customs, traditions, and language, is an important part of life in Aotearoa.

The Māori name for New Zealand is Aotearoa, which means Land of the Long White Cloud. Here are some phrases and words you might hear:

Kia ora! Kia ora can mean hello, good morning, good afternoon and thank you.

Ako To learn, study, instruct, teach, advise.

Ākonga Student, pupil, learner, protégé.

Kaiako Teacher, instructor.



Auckland

Auckland (known as ‘the city of sails’) is set on a beautiful gulf, filled with many small islands and was established in 1841 on land offered by the Ngāti Whātua tribe.

It is a major gateway to New Zealand, and a prosperous port. Auckland is our largest city and a third of New Zealand’s population live here. It’s a fast-growing business hub and where all the action happens.

Immerse yourself in vibrant cafes, nightlife, shopping, museums, galleries and parks. You will love Auckland’s warm climate, stunning scenery and multicultural communities.

It is the perfect blend of sophisticated city living and outdoor beauty for you to enjoy.

Tāmaki Makaurau, the Māori name for Auckland, means Tāmaki – desired by many. This name refers to the abundance of natural resources, strategic vantage points, portage routes, and kai (food), which first attracted Māori and then other settlers.

3rd top quality of living in the world

Mercer Quality of Living Survey 2023



OUR CAMPUSES

Future Skills has four unique campuses in Manukau, Royal Oak, Takapuna and Auckland's central city. The institute has a warm family-like environment for students. We provide a supportive, modern, fun and safe learning space where everyone can reach their full potential.

Manukau

Level 4, Westfield Manukau

This modern site sits in the middle of all the action of Westfield Manukau City Shopping Centre. Go to Auckland Transport's [journey planner](#) website for details of how to get there.

Future Skills Academy was founded in Manukau in 2000. It has held strong ties with the South Auckland community since inception.





Royal Oak

665 Manukau Road, Royal Oak, Auckland

This modern building sits in a central location with good transport links. Go to Auckland Transport's [journey planner](#) website for details of how to get there.

Royal Oak campus features a small and family orientated environment.

It's right across the road from Cornwall Park, a top Auckland attraction.



Auckland International

Level 1, 350 Queen Street, Auckland

The Auckland Campus is located in a modern building on the city's main shopping and business street – Queen Street.

We have excellent facilities, including computer labs, free internet and a student lounge where you can hang out, play games, chat with other students and take your study breaks. Go to Auckland Transport's [journey planner](#) website for details of how to get there.

Study in an environment that celebrates diversity with programmes delivered by leading academic and business experts.

Takapuna

51 Hurstmere Road, Takapuna, Auckland

Future Skills acquired Ashton Warner Nanny Academy in 2022 and soon after took the opportunity to establish a contemporary learning space at a new location in the heart of Takapuna.

The campus currently caters to Ashton Warner's Early Childhood Education students as well as learners from other programmes.

Our Takapuna campus has a great feel and easy access to public transport, local amenities, and student accommodation.





STUDY OPTIONS

We offer a range of degrees, pathways and programmes that have been created with academic and business experts for the purpose of making you an employable graduate. Additionally, our programmes are tailored to the specific needs of international students.

Business

- Bachelor of Applied Management (Level 7)
- Graduate Diploma in Applied Management (Level 7)
- Postgraduate Diploma in Applied Management (Business Management) (Level 8)
- Postgraduate Diploma in Applied Management (Business Information Systems) (Level 8)
- Master of Applied Management (Business Management) (Level 9)
- Master of Applied Management (Business Information Systems) (Level 9)

Construction

- New Zealand Diploma in Construction (Quantity Surveying) (Level 6)
- Bachelor of Construction (Quantity Surveying) (Level 7)

Information Technology

- Graduate Diploma in Information Technology (Level 7)
- Bachelor of Information Technology (Level 7)

New Zealand offers residency under a number of categories including for those who have completed their study in New Zealand. To learn more about your specific situation, please refer to the [Immigration New Zealand](#) website or engage with a licensed immigration adviser.



BUSINESS

Learn current industry best-practice and gain vital practical experience through hands-on, project-based learning and internships.

CERTIFICATES

DIPLOMAS

POSTGRADUATE DIPLOMAS

MASTER'S DEGREES

For more detailed programme information, intake dates and entry requirements, please visit our website, www.futureskills.co.nz





Bachelor of Applied Management (Level 7)

Gain a business degree based in real-world knowledge. As organisations are constantly changing, real-life learning is more relevant than ever.

This programme has industry experiences at its centre with case studies and workplace-based or focused assignments. The practical learning doesn't stop there as you'll also complete an internship during your third year. This internship will place you within a real-world business where you'll need to complete a research project as part of your time with the organisation.

LEVEL	7
CREDITS	360 credits
FEES	\$22,900/yr (\$18,900/yr after scholarship)
DURATION	3 years full-time
WHO CAN APPLY?	International students, over 18 years of age
DELIVERY	On campus, Auckland Central
NEXT INTAKE	February, April, July, and October

Highlights

Internships available

Complete a project within an organisation

Practical courses

Interactive classes

YOUR EXCITING NEW CAREER AWAITS

This programme can lead to a successful career as a Project Manager, Team Leader, Marketer, Marketing Assistant, or Human Resources Assistant.

ENTRY INFORMATION

If you are under 20, you must have:

- NCEA Level 3
- 14 credits at Level 3 in each of three NZQA approved university entrance subjects, and
- 10 Literacy credits at Level 2 or above, made up of:
 - 5 credits in reading and 5 credits in writing, and
- 10 Numeracy credits at Level 1 or above, made up of:
 - specified achievement standards available through a range of subjects OR
 - package of three numeracy unit standards (26623, 26626, 26627- all three required).

If you are over 20, you must supply evidence of industry experience and/or alternative qualifications such as the New Zealand Diploma in Business.

International students will be individually assessed to ensure they meet degree-level entry requirements. [Click here](#) for equivalent academic entry requirements by country.

If English is not your first language, you must provide:

- New Zealand University Entrance OR
- Overall Academic IELTS 6.0 with no individual band score lower than 5.5 (achieved in one test completed in the last two years), OR
- Acceptable alternative evidence of the required IELTS (see here for NZQA proficiency table and a list of recognised proficiency tests).

For detailed entry information, please refer to our [website](#)



Graduate Diploma in Applied Management (Level 7)

Want to learn more about a specific area of management to complement your existing degree or career aspirations?

Then this is the qualification for you. Complete an intensive programme of generic business study or study in a specific area of business management. Graduates will have a sound understanding of the dynamic environment in which managers operate, enabling them to apply that knowledge at organisational and strategic levels in a range of industries and organisations. Undertake a significant industry-based research project, coupled with a 200-hour internship enabling you to gain vital practical experience.

LEVEL	7
CREDITS	120 credits
FEES	\$22,900
DURATION	1 year full-time
WHO CAN APPLY?	International students, over 18 years of age
DELIVERY	On campus, Auckland Central
NEXT INTAKE	TBC

Highlights

Internships available

Complete a project within an organisation

Practical courses

Interactive classes

YOUR EXCITING NEW CAREER AWAITS

This programme can lead to successful careers as a Project Manager, Team Leader, Marketer, Marketing Assistant, or Human Resources Assistant.

ENTRY INFORMATION

An undergraduate degree or appropriate degree-equivalent practical, professional or scholarly experience.

You can't enrol in a major that you've already studied at undergraduate level.

International students will be individually assessed to ensure they meet the entry requirements. [Click here](#) for equivalent academic entry requirements by country.

If English is not your first language, you must provide:

- New Zealand University Entrance **OR**
- Overall Academic IELTS 6.0 with no individual band score lower than 5.5 (achieved in **one** test completed in the last two years), **OR**
- Acceptable alternative evidence of the required IELTS ([see here](#) for NZQA proficiency table and a list of recognised proficiency tests).

For detailed entry information, please refer to our [website](#).



Postgraduate Diploma in Applied Management (Business Management) (Level 8)

Management occupations are projected to grow rapidly over the next ten years leading to an increasing need for management professionals.

There is also an increasing demand for those professionals to hold higher level qualifications. Applicants for these roles are therefore at a considerable advantage with a postgraduate qualification and there is a strong emphasis within this programme on application of knowledge and development capabilities in business management or business information systems.

Flexibility within this qualification will also enable aspirations to be matched/targeted to specific employment opportunities.

LEVEL	8
CREDITS	120 credits
FEES	\$25,900 (\$22,900 after scholarship)
DURATION	1 year full-time
WHO CAN APPLY?	International students, over 18 years of age
DELIVERY	On campus, Auckland Central
NEXT INTAKE	February, April, July, and October

Highlights

Choose your speciality

Practical courses

Interactive classes

Complete a professional research project

YOUR EXCITING NEW CAREER AWAITS

This programme can lead to a successful career as a Project Manager, Data Analyst, Marketing Manager, Information Systems Manager, or General Manager.

ENTRY INFORMATION

Minimum academic entry requirements are:

- A Bachelor's degree (or equivalent qualification) in a related discipline, OR
- A combination of academic qualifications and relevant skills and knowledge acquired through work or professional experience that is deemed equivalent to the above.
- **International applicants** must demonstrate that they have equivalent academic qualifications and experience. [Click here](#) for your country's equivalent academic entry requirements.

If English is not your first language, you must provide:

- New Zealand University Entrance OR
- Overall Academic IELTS 6.5 with no individual band score lower than 6.0 (achieved in one test completed in the last two years), OR
- Acceptable alternative evidence of the required IELTS ([see here](#) for NZQA proficiency table and a list of recognised proficiency tests).

For detailed entry information, please refer to our [website](#)



Postgraduate Diploma in Applied Management (Business Information Systems) (Level 8)

Management occupations are projected to grow rapidly over the next ten years leading to an increasing need for management professionals.

There is also an increasing demand for those professionals to hold higher level qualifications. Applicants for these roles are therefore at a considerable advantage with a postgraduate qualification.

You will extend and deepen your knowledge and understanding of current information systems management capabilities and issues in a range of applied settings through experiential learning strategies and reflective practice. There is the opportunity to work with industry during a professional project and the programme also includes employability workshops, industry events and guest speakers.

LEVEL	8
CREDITS	120 credits
FEES	\$25,900 (\$22,900 after scholarship)
DURATION	1 year full-time
WHO CAN APPLY?	International students, over 18 years of age
DELIVERY	On campus, Auckland Central
NEXT INTAKE	February, April, July, and October

Highlights

Choose your speciality

Practical courses

Interactive classes

Complete a professional research project

YOUR EXCITING NEW CAREER AWAITS

This programme can lead to successful careers as an analyst in Business Intelligence and Information Systems. Also as a Project Manager, Technical/Solution Analyst, User Experience/ Front End Designer and Information Systems Researcher.

ENTRY INFORMATION

Minimum academic entry requirements are:

- A Bachelor's degree (or equivalent qualification) in a related discipline, OR
- A combination of academic qualifications and relevant skills and knowledge acquired through work or professional experience that is deemed equivalent to the above.
- **International applicants** must demonstrate that they have equivalent academic qualifications and experience. [Click here](#) for your country's equivalent academic entry requirements.

If English is not your first language, you must provide:

- New Zealand University Entrance OR
- Overall Academic IELTS 6.5 with no individual band score lower than 6.0 (achieved in one test completed in the last two years), OR
- Acceptable alternative evidence of the required IELTS ([see here](#) for NZQA proficiency table and a list of recognised proficiency tests).

For detailed entry information, please refer to our [website](#)



Master of Applied Management (Business Management) (Level 9)

Successful completion of this advanced programme will enable you to confidently engage with research and its application across a range of disciplines within the applied management context.

Graduates of this qualification are critical thinkers, effective problem solvers, future-focused and apply specialised management and leadership knowledge and capabilities to new situations within the field of business management.

Management occupations are projected to grow rapidly over the next ten years leading to an increasing need for management professionals and there is also an increasing demand for those professionals to hold higher level qualifications. Applicants for these roles are therefore at a considerable advantage with a postgraduate qualification.

This qualification offers you three pathways: Coursework, Professional Project and Coursework, or Research Thesis.

LEVEL	9
CREDITS	180 credits
FEES	\$38,850 (\$33,850 after scholarship)
DURATION	18 months full-time
WHO CAN APPLY?	International students, over 18 years of age
DELIVERY	On campus, Auckland Central
NEXT INTAKE	February, April, July, and October

Highlights

Choose your speciality

Practical courses

Interactive classes

Complete a thesis or professional research project

YOUR EXCITING NEW CAREER AWAITS

This programme can lead to a successful career as a Project Manager, Data Analyst, Marketing Manager, Information Systems Manager, or General Manager.

ENTRY INFORMATION

Minimum entry requirements are:

- A Bachelor's degree (or equivalent qualification) in a related discipline with a grade average at Level 7/8 of B- or higher, OR
- A combination of academic qualifications and relevant skills and knowledge acquired through work or professional experience that is deemed equivalent to the above.
- International applicants must demonstrate that they have equivalent academic qualifications and experience. [Click here](#) for your country's equivalent academic entry requirements.

If English is not your first language, you must provide:

- New Zealand University Entrance OR
- Overall Academic IELTS 6.5 with no individual band score lower than 6.0 (achieved in one test completed in the last two years), OR
- Acceptable alternative evidence of the required IELTS ([see here](#) for NZQA proficiency table and a list of recognised proficiency tests).



Master of Applied Management (Business Information Systems) (Level 9)

Successful completion of this advanced programme will enable you to confidently engage with research and its application across a range of disciplines within the business information systems context.

Graduates of this qualification are critical thinkers, effective problem solvers, future-focused and apply specialised management and leadership knowledge and capabilities to new situations within the field of business information systems.

Business information systems occupations are projected to grow rapidly over the next ten years leading to an increasing need for information systems professionals. There is also an increasing demand for those professionals to hold higher level qualifications.

This Master offers you three pathway options: Coursework, Professional Project and Coursework, or Research Thesis. Within the programme, you will also have the opportunity to attend employability workshops, industry and guest speaker events.

LEVEL	9
CREDITS	180 credits
FEES	\$38,850 (\$33,850 after scholarship)
DURATION	18 months full-time
WHO CAN APPLY?	International students, over 18 years of age
DELIVERY	On campus, Auckland Central
NEXT INTAKE	February, April, July, and October

Highlights

Choose your speciality

Practical courses

Interactive classes

Complete a thesis or professional research project

YOUR EXCITING NEW CAREER AWAITS

This programme can lead to successful careers as an analyst in Business Intelligence and Information Systems. Also as a Project Manager, Technical/Solution Analyst, User Experience/ Front End Designer and Information Systems Researcher.

ENTRY INFORMATION

Minimum entry requirements are:

- A Bachelor's degree (or equivalent qualification) in a related discipline with a grade average at Level 7/8 of B- or higher, OR
- A combination of academic qualifications and relevant skills and knowledge acquired through work or professional experience that is deemed equivalent to the above.
- International applicants must demonstrate that they have equivalent academic qualifications and experience. [Click here](#) for your country's equivalent academic entry requirements.

If English is not your first language, you must provide:

- New Zealand University Entrance OR
- Overall Academic IELTS 6.5 with no individual band score lower than 6.0 (achieved in one test completed in the last two years), OR
- Acceptable alternative evidence of the required IELTS ([see here](#) for NZQA proficiency table and a list of recognised proficiency tests).



“The teachers were always available to provide guidance and support, which made the learning experience enjoyable and rewarding.”

CHENGYUN (EVAN) WANG
Master of Applied Management

For more success stories go to auckland.op.ac.nz

SUCCESS STORIES

Master's graduate Chengyun (Evan) Wang is loving his work as a Payment and Settlement Analyst at the Bank of China New Zealand.

Evan came to New Zealand from China to study for an undergraduate degree in Accounting and Information Systems at the University of Auckland. After that, he decided to pursue a Master of Applied Management at OPAIC.

“I chose to study in New Zealand because it is known for its high-quality education system and its beautiful natural scenery. I was particularly drawn to Auckland because it's a multicultural city with a thriving business community,” says Evan.

“I decided to study at OPAIC because I was impressed by the range of courses offered and the focus on practical, hands-on learning. I knew that studying at OPAIC would give me the skills and knowledge I needed to succeed in the business world.”

Evan says the best part about studying at OPAIC was the opportunity to learn from experienced professionals who were passionate about their fields.

“The classes were small, which meant that I had plenty of opportunities to ask questions and get feedback. The teachers were always available to provide guidance and support, which made the learning experience enjoyable and rewarding.”

Evan is now working as a Payment and Settlement Analyst at Bank of China New Zealand. His job involves analysing payment data and developing strategies to improve payment and settlement processes.

“The best part of my job is that it challenges me to think creatively and to come up with innovative solutions to complex problems. I also enjoy working with a team of talented professionals who share my passion for excellence.”

Evan says his studies at OPAIC gave him a solid foundation in business management and equipped him with the analytical and problem-solving skills needed to succeed in his current role.

“I also developed strong communication and teamwork skills, which have been invaluable in my work at Bank of China New Zealand.”

His advice for current and future students is to make the most of their time at OPAIC by getting involved in extracurricular activities, networking with other students and professionals, and taking advantage of any opportunities for internships or work experience.

“Also, always be open to learning and be willing to take on new challenges. Remember that your education is a journey, and the more you put into it, the more you'll get out of it.”





CONSTRUCTION

Gain the skills you need to enter the booming construction industry or learn to undertake regulatory duties at a Building Consent Authority or construction company.

DIPLOMA
BACHELOR'S DEGREE

For more detailed programme information, intake dates and entry requirements, please visit our website, www.futureskills.co.nz





NZ Diploma in Construction (Quantity Surveying) (Level 6)

Want to kickstart your career in quantity surveying?

Gain real-world technical skills in budgeting and cost planning for construction projects in this hands-on learning programme at our Auckland International Campus on Queen St. This project-based programme is run in four blocks of study over two years. Each block lasts nine weeks. You need to dedicate about 35 hours per week to the programme.

New Zealand offers residency under a number of categories including for those who have completed their study in New Zealand. To learn more about your specific situation, please refer to the [Immigration New Zealand website](#) or engage with a licensed immigration adviser.

LEVEL	6
CREDITS	240 credits
FEES	\$23,900/yr (\$19,400/yr after scholarship)
DURATION	2 years
WHO CAN APPLY?	International students, over 18 years of age
DELIVERY	On campus Central Auckland, Manukau
NEXT INTAKE	February, April, July, and October

Highlights

Learn to measure and estimate building costs

Learn the latest technologies in construction

Learn to communicate in a construction related context

Join the NZIQS as a free student member

YOUR EXCITING NEW CAREER AWAITS

This programme can lead to successful careers as an Estimator, Consultant, Contract Administrator, Contract Manager and Junior Quantity Surveyor.

ENTRY INFORMATION

- A minimum of 50 NCEA credits at Level 2, including:
- 12 credits in Maths, and
- a minimum of 12 Literacy credits at NCEA Level 1,
- OR be able to demonstrate equivalent knowledge and skills.

For detailed entry information for both domestic and international students, please refer to our [website](#).



Bachelor of Construction (Level 7)

**Want to become an expert in construction project management?
Now you can study part-time.**

Gain the skills to contribute greatly to the booming building industry, at our Auckland Campus on Queen St. Meet the surging demand for construction professionals by learning technical, work-ready skills to price and manage construction projects. This degree broadens your skills in business and construction law and management.

The New Zealand Diploma in Construction (Quantity Surveying) forms the first two years of the Bachelor of Construction (Quantity Surveying). Learners can choose whether to enrol in the Diploma or the Degree.

Graduates of the New Zealand Diploma in Construction (Level 6) (Construction Management) or (Quantity Surveying) will be credited the courses they have completed up to a maximum of 240 credits.

New Zealand offers residency under a number of categories including for those who have completed their study in New Zealand. To learn more about your specific situation, please refer to the [Immigration New Zealand](#) website or engage with a licensed immigration adviser.

LEVEL	7
CREDITS	360 credits
FEES	\$23,900/yr (\$19,400/yr after scholarship)
DURATION	3 years full-time or six years part-time or longer by further agreement
WHO CAN APPLY?	International students, over 18 years of age
DELIVERY	Central Auckland, Manukau
NEXT INTAKE	February, April, July, and October

Highlights

Hands-on project based learning

Industry experienced teaching staff

Learn the latest technologies

Learn to communicate in a construction related context

YOUR EXCITING NEW CAREER AWAITS

This programme can lead to successful careers as a Consultant, Estimator, Contract Administrator, Contract Manager and Quantity Surveyor.

ENTRY INFORMATION

If you are under 20, you will need to have NCEA Level 3 including 14 credits at Level 3 or above in three NZQA-approved university entrance subjects, and meet literacy and numeracy requirements.

If you are over 20, you need to show evidence of industry experience and/or alternative relevant qualifications.

Additional Requirements

If you don't meet the academic entry criteria, you may still be given provisional entry to year one at the discretion of the Programme Leader.

For detailed entry information for both domestic and international students, please refer to our [website](#).



“I received an interview application from a contracting construction company the day after I graduated.”

CHUN (SIMON) SONG
Bachelor of Construction

For more success stories go to auckland.op.ac.nz

SUCCESS STORIES

Chun (Simon) Song got a job interview with a construction company the day after he completed his Bachelor of Construction with us and is now working as an Earthwork Site Manager.

Simon came to New Zealand from Beijing during high school. He spent three years at Pakuranga College before enrolling for his tertiary study.

OPAIC appealed to him because of its learning environment and its location in the city centre.

He decided on the Bachelor of Construction because he was interested in civil engineering and the architecture of building foundations.

Simon says his lecturers here were all friendly and patient and happy to answer all of his questions.

He says OPAIC has given him a great platform to start his career.

“I received an interview application from a contracting construction company the day after I graduated, and I have now become an Earthwork Site Manager.”

He advises current and future students to ask as many questions as possible in class.

“The lecturers will answer you patiently. You need to understand that you are learning and working for your own future.”

Simon says there's good money to be made in the construction industry, but students must first work hard to develop their knowledge and skills.

“Learn to overcome difficulties and persevere to achieve success.”





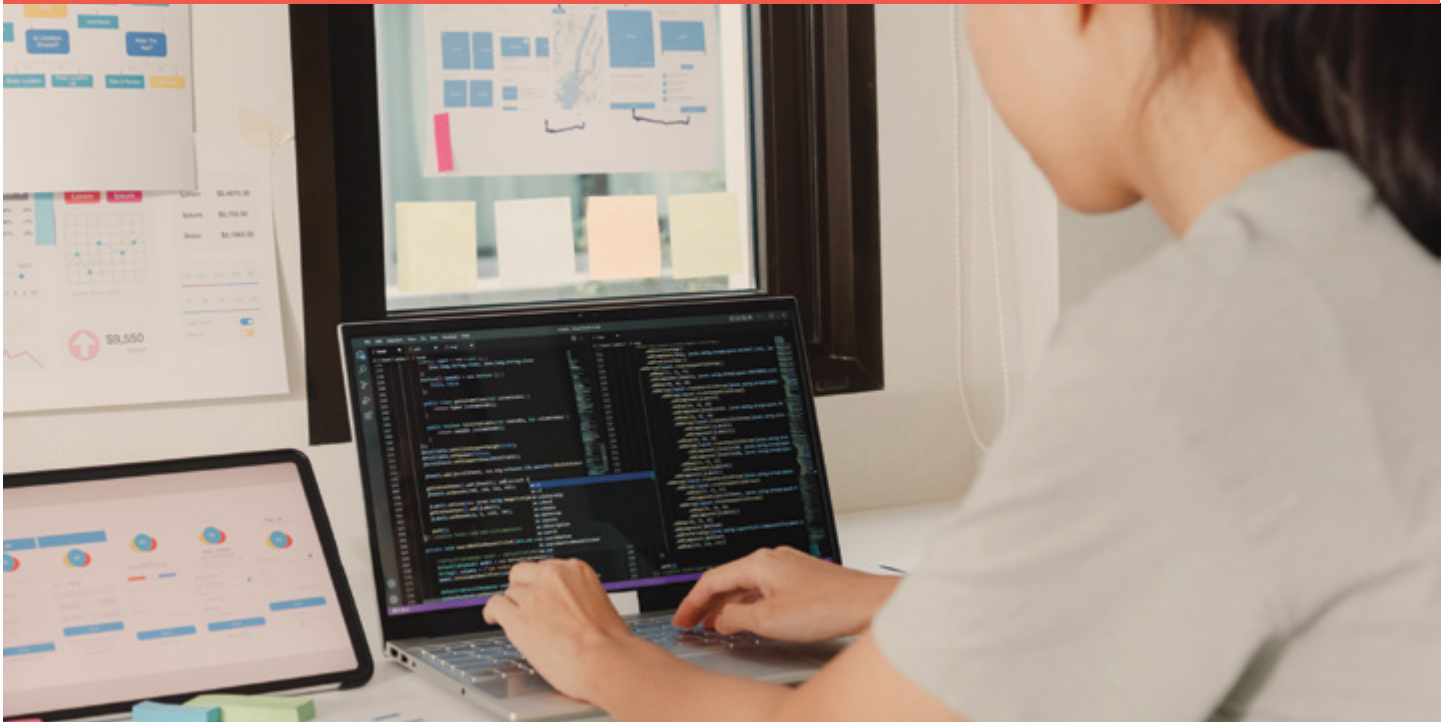
INFORMATION TECHNOLOGY

Get ready to make a real impact in the world.

**BACHELOR
GRADUATE DIPLOMA**

For more detailed programme information, intake dates and entry requirements, please visit our website, www.futureskills.co.nz





Bachelor of Information Technology (Level 7)

IT is problem solving. Trouble shooting. Critical thinking. Creating. Designing. Building. It's working alone or working with people.

Learn what Information Technology professionals do through hands-on and practical work. Build the communication skills you need to work effectively in the industry.

LEVEL	7
CREDITS	360 credits
FEES	\$23,900/yr (\$19,400/yr after scholarship)
DURATION	3 years full-time
WHO CAN APPLY?	International students, over 18 years of age
DELIVERY	On campus, Auckland Central
NEXT INTAKE	February, April, July, and October

Highlights

Hands-on and practical courses

Project-based and experiential learning

Develop technical and transferrable soft skills by working on real-world projects

Learn to use the latest tools and technologies

YOUR EXCITING NEW CAREER AWAITS

This programme can lead to successful careers as a Web Developer, Systems Administrator, Software Developer, Programmer, Business Analyst and Database Administrator.

ENTRY INFORMATION

- NCEA Level 3
- 14 credits at Level 3 or above in each of three NZQA approved university entrance subjects, and
- 10 Literacy credits at Level 2 or above, made up of:
 - 5 credits in reading and 5 credits in writing, and
- 10 Numeracy credits at Level 1 or above, made up of:
 - specified achievement standards available through a range of subjects OR
 - package of three numeracy unit standards (26623, 26626, 26627- all three required).

OR the New Zealand Certificate in Information Technology Essentials (Level 4), or equivalent.

- Discretionary entry may be given to applicants over 20 who do not hold the above requirements (you will need to undertake an interview).
- Possible interview at time of selection.

If English is not your first language, you must provide:

- New Zealand University Entrance OR
- Overall Academic IELTS 6.0 with no individual band score lower than 5.5 (achieved in one test completed in the last two years), OR
- Acceptable alternative evidence of the required IELTS ([see here](#) for NZQA proficiency table and a list of recognised proficiency tests).

For detailed entry information, please refer to our [website](#).



Graduate Diploma in Information Technology (Level 7)

Develop your skills for the New Zealand IT and business environment!

Specifically designed for international students, this programme will provide you with the professional skills that you will need to work effectively in the New Zealand IT and business environment.

These industries are constantly evolving and an up-to-date qualification is essential.

Small class sizes allow for better interaction with our experienced teachers and you will have the chance to practise your new skills with a range of excellent equipment and software applications.

LEVEL	7
CREDITS	120 credits
FEES	\$23,900
DURATION	1 year full-time
WHO CAN APPLY?	International students, over 18 years of age
DELIVERY	On campus, Auckland Central
NEXT INTAKE	TBC

Highlights

Hands-on and practical courses

Project-based and experiential learning

Develop technical and transferrable soft skills by working on real-world projects

Learn to use the latest tools and technologies

YOUR EXCITING NEW CAREER AWAITS

This programme can lead to successful careers as a Software Developer, in Full-stack and Mobile Application Development, Network Cloud Administration and Business Intelligence.

ENTRY INFORMATION

You must hold a recognised bachelor's degree in computing or a related discipline **OR** an equivalent qualification supported by practical, professional or scholarly experience. [Click here](#) for your country's equivalent academic entry requirements.

If English is not your first language, you must provide:

- New Zealand University Entrance **OR**
- Overall Academic IELTS 6.0 with no individual band score lower than 5.5 (achieved in **one** test completed in the last two years), **OR**
- Acceptable alternative evidence of the required IELTS ([see here](#) for NZQA proficiency table and a list of recognised proficiency tests).

For detailed entry information, please refer to our [website](#).



“We got a lot of hands-on experience and built a lot of projects for our assignments.”

ERICA NOVIANTI

Bachelor of Information Technology

For more success stories go to auckland.op.ac.nz

SUCCESS STORIES

Erica Novianti loved the small class sizes and hands-on approach offered by Otago Polytechnic Auckland International Campus (OPAIC).

She recently completed her Bachelor of Information Technology and was one of our top-performing students.

Erica grew up in Indonesia and never considered going overseas for tertiary study until her final year of high school in 2019. It was her mother who convinced her to come to New Zealand

“I heard a lot of stories from my mom about New Zealand. She talked about her trip here and said the nature is beautiful.”

Another family member then recommended OPAIC, and our generous scholarships sealed the deal.

She was interested in IT and so started researching the field of study online.

“I found a lot of videos showing how they program apps. I was interested in learning about it and wanted to make my own app,” says Erica.

She says it’s important for students to pursue studies in the areas they’re passionate about. That way they’ll enjoy the experience.

“I researched more and found out that OPAIC teaches in practical ways rather than theoretical - hands-on experience with real industry projects which got me interested.”

Erica liked the small class sizes here, which allowed students to easily interact with lecturers and one another. She could even approach lecturers outside of class time with questions and they were happy to help.

“We got a lot of hands-on experience and built a lot of projects for our assignments. We also had studio courses where we got to experience how the industry really works,” she says.

Now that she’s finished her study, Erica’s searching for a job in software development while continuing to hone her skills by practising programming languages.



The testimonials in this prospectus come from our Otago Polytechnic Auckland International Campus (OPAIC) students. OPAIC is a partnership between Future Skills and Otago Polytechnic. Our new Future Skills International campus operates out of the same building as OPAIC and programmes are taught by the same lecturers.



STUDENT SERVICES

Starting life as a new student can be exciting as well as challenging. From the moment you consider studying at Future Skills, to your arrival on campus, we're here to help you with any questions or concerns.

Our student services offer a range of advice and resources to help you succeed in your studies, and feel supported while at Future Skills.

Whether you need help with an issue that's affecting your study that you want to talk about, or you need guidance to organise your work/life balance, we're here to help!

Join the dynamic Student Focus Group to make your voice heard and to bring about any changes you want to see on campus.

Student wellness

If you have serious concerns about someone's immediate safety, **phone 111** or take them to the Accident and Emergency Department (A&E) at your nearest hospital. Call your nearest hospital, your district health board's psychiatric emergency service or mental health crisis assessment team. Remain with them and help them to stay safe until support arrives.

FOR URGENT HELP IN A MENTAL HEALTH CRISIS contact the Community Mental Health Urgent Response team: Central Auckland 0800 800 717, South Auckland 09 261 3700.

If you are pregnant while studying, you should seek advice from a Lead Maternity Carer and GP about continuing your studies.

We want students to be happy and to know where they can turn for help. Our staff are always available for a chat but if we are unable to provide the help you need, we will refer you to the right service. We encourage you to call the following services if you need extra support:

Help lines

Need to talk? **1737** – free call or text

- The Depression Helpline 0800 111 757
- Healthline 0800 611 116
- Lifeline 0800 543 354
- Samaritans 0800 726 666
- Youthline 0800 376 633
- Alcohol Drug Helpline 0800 787 797

Go [here](#) for a comprehensive list of help lines and mental health services.

Pastoral Care

Future Skills is a safe environment where students are valued for their culture, personalities and talents. We provide pastoral care support for every learner. Talk to us any time about any issues that may be affecting your studies.



All conversations are private and confidential. We will support healthy emotional development and want students to feel a sense of security at campus to break down any barriers to learning. You will get to know your pastoral care specialist at your orientation.

Please feel free to discuss any matter with your tutor or our pastoral care specialists in our Student Support team. For more information email studentsuccess@futureskills.co.nz or phone 0800 888 001.

Campus Services

Student Cafeteria

Future Skills has fully-equipped student cafeterias on each campus. They include the following:

- Free hot drink (coffee, tea and hot water)
- Free filtered water fountain
- Toasters
- Microwaves
- Cups and cutlery
- Fridge

Academic Support Services

Future Skills offers Academic Support services. These practices ensure all students have an equal opportunity for success by addressing any barriers to learning.

Some of the services we offer are:

- A dedicated Learning Support Advisor
- Individual Learning and Support Plans
- English Language and Numeracy support
- Digital Literacy Support

As your success is crucial, we are constantly striving to see you supported academically by your lecturer and peers. Group academic workshops allow you to learn about various academic requirements such as paraphrasing, assessment requirements and APA referencing.

If you need help with using the digital software and platforms utilised in the classroom, please reach out to the Student Success Team and someone can assist you.

Moodle

Moodle is your go-to online learning tool to make studying a lot easier. You can gain access to your programme material through Moodle anywhere you have a computer and an internet connection. Students can reach Moodle easily through the log-in button at www.futureskills.co.nz

Student Hub

Our learners have their own online hub which ensures students can find information with ease. You can access it through the log-in button at www.futureskills.co.nz

Below are a brief overview of the features:

Quick access to frequently used information and documents

Easy access to Moodle courses

Announcements, support & events are updated here

Search and access quick links to support information

Link to the Wellbeing toolbox for useful strategies to look after yourself

Send us feedback so that we can make sure you are supported



CAREERS

Top employability skills can make the difference that lands you the job. These comprise the achievements, skills and personal attributes that make graduates more likely to find employment and to have successful careers.

The world of work is changing and many professions are calling for people with social and emotional intelligence, critical thinking and problem solving attributes. Among the sought after employability skills are a positive attitude, communication, teamwork, self-management, willingness to learn, and resilience.

At Future Skills, you not only learn skills but also practise them firsthand. Learners' work placements often lead to opportunities for permanent employability after they graduate. Our academic staff support health programme graduates to move into further study or get a job. Our approachable teachers can help students with CV writing and provide job references.

We organise visits from private and government recruitment agencies and the Dress for Success team to help you get prepared for employment. Our small classes result in more one-on-one time to develop the skills needed for your chosen career. Open your job prospects and make headway with Future Skills.

Employability resources

Wanting to land that all important job? Great CVs and cover letters will make you stand out from other applicants. Use these resources to beat your competitors in the job market. Click on the links below to see our resources.

- [CV Builder](#) will help you make a great CV which will get you noticed.
- How to write a [cover letter](#) employers will want to read.
- Looking for your next role? Here are some insightful [job search tips](#).
- Here's [what you need to know](#) to break into the hidden job market.
- Preparing for a job interview? Here are [some tips](#) on how to answer common interview questions.
- Looking for work? Check out [Student Job Search](#).



Contact us

Thinking of studying at Future Skills? Go to www.futureskills.co.nz and use our enquiry form. Whether you know what you want to learn or are unsure which programme is right for you, get in touch and we will get back to you within 48 hours.

DISCLAIMER: The information in this prospectus aims to provide an overview of what we offer. While every effort is made to ensure accuracy at the time of production, Future Skills reserves the right to alter and amend information as well as withdraw programmes without notice. All programmes, fees and costs are approximate and subject to change.

0800 550 410
international@futureskills.co.nz
www.futureskills.co.nz



Manukau Campus Level 4, Westfield Manukau
Royal Oak Campus 665 Manukau Road
Auckland Campus Level 1, 350 Queen Street
Takapuna Campus 51 Hurstmere Road
Postal Address PO Box 76-549, Manukau