



# GREEN BAY HIGH SCHOOL

INTERNATIONAL PROSPECTUS





# WELCOME



## Green Bay High School is a great place to go to school.

We have excellent academic achievement across a broad range of subjects and our focus is on creating the best environment and opportunity for our students to achieve. Our school has excellent facilities and well-resourced faculties which provide our students with a rich and exciting physical learning environment.



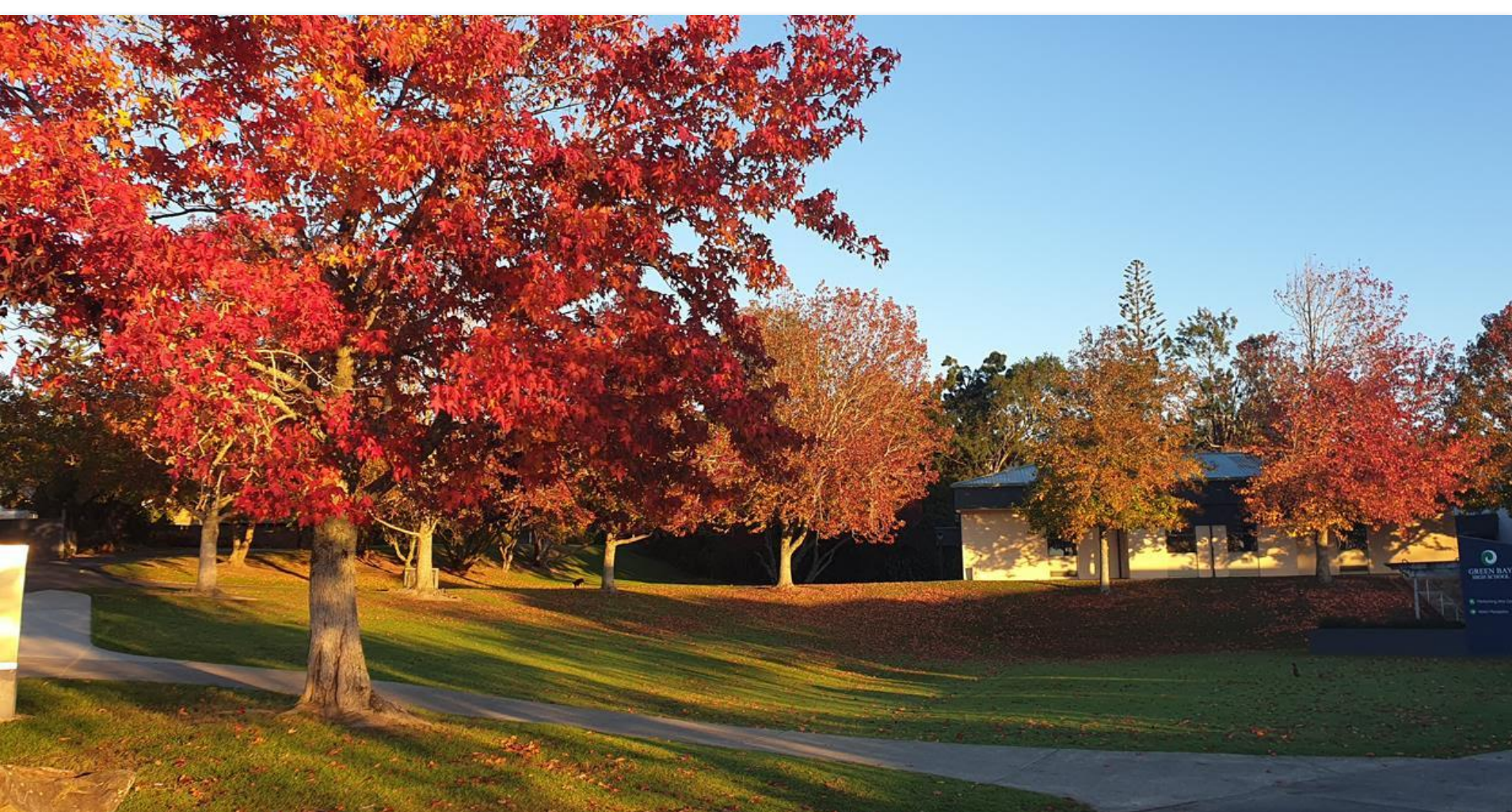
Green Bay High School prides itself on delivering a broad curriculum which offers a range of traditional subjects and a variety of elective subjects alongside a personal approach to learning. Our teachers know their students well and make time to connect with them, supporting each student to achieve their personal goals. We believe that these strong relationships make a great difference to the success of all our students.

We warmly welcome you and your child to become part of the Green Bay High School community.

Ngā mihi nui

Fiona Barker  
Principal

<b>Type of School:</b>	Co-educational	<b>School Level:</b>	Year 9 - 13
<b>No. of students:</b>	1850	<b>International Students:</b>	50
<b>Students from:</b>	Austria, Brazil, Cambodia, Chile, China, Colombia, Germany, Italy, India, Japan, Korea, Sri Lanka, Switzerland, Taiwan, Thailand, Vietnam, France and Spain		

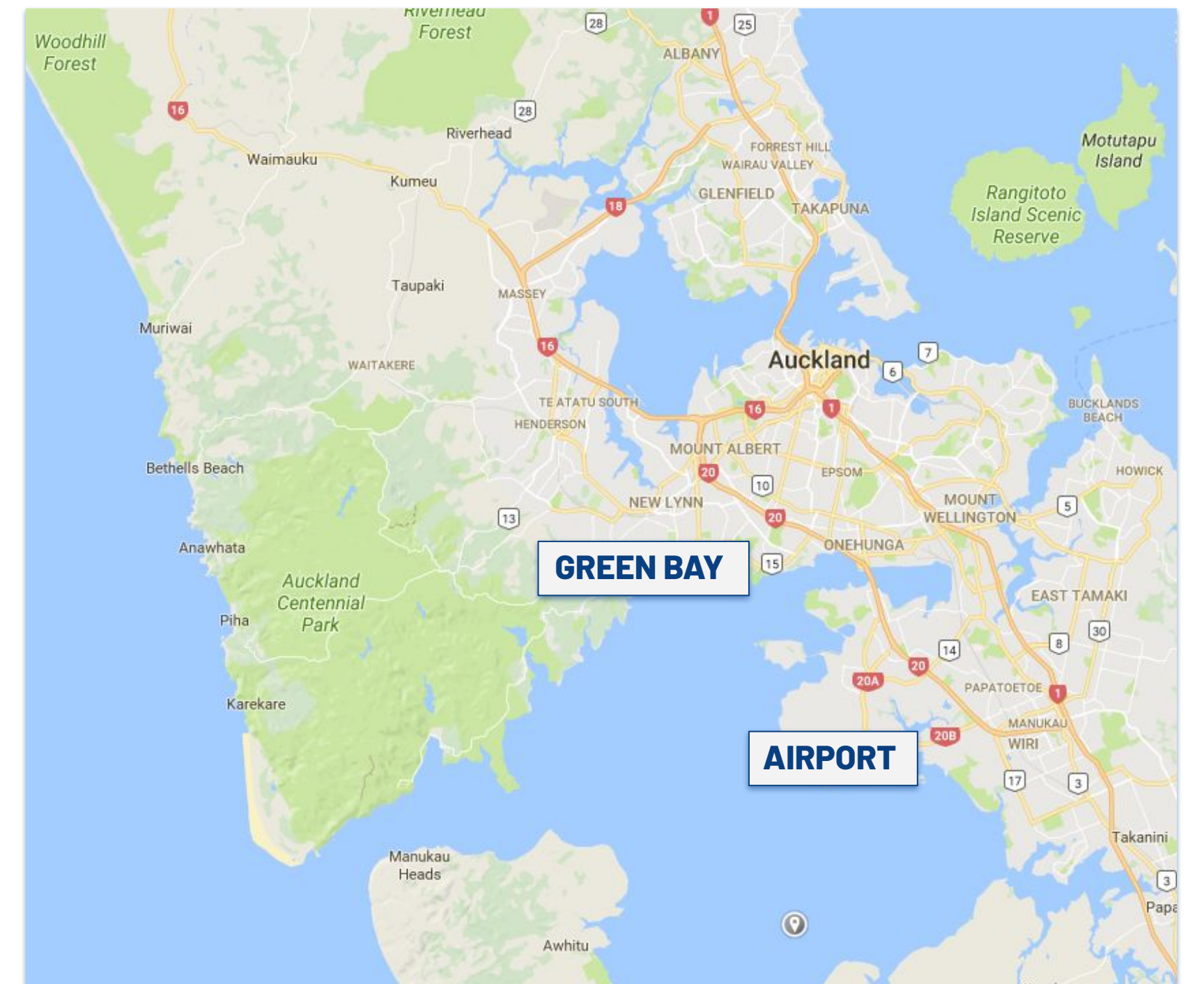




# LOCATION

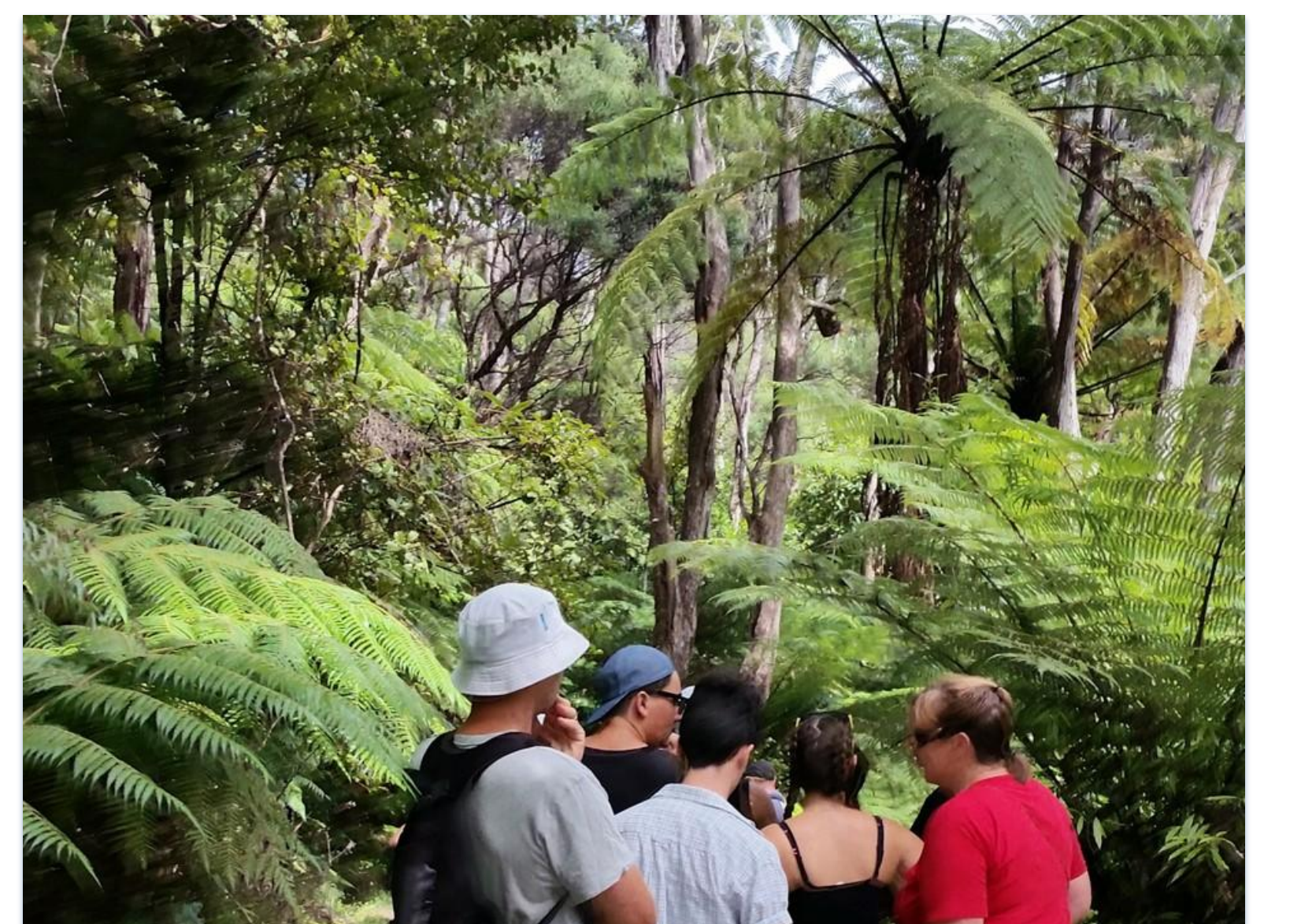
Green Bay High School is located a 25 minute drive from both downtown Auckland and the International Airport. It is also on the edge of a large regional park called the Waitakere Ranges which boasts miles of black sand surf beaches and hectares of native forest.

We have the best of both worlds with easy access to the city on public transport as well as bush walks and beautiful beaches in our own backyard.



The local community is art focused and nearby are theatres, dance schools, and art galleries, which are easily accessed by students. There is a local market on in the weekends featuring local artisanal products.

In addition, there is a world class golf course right next to the school which provides opportunities for both experienced golfers and those students who want to try something new.





# STUDENT SUPPORT

Student well-being is a focus across the school with a strong pastoral care system. At Green Bay High School we have a range of support systems in place to make sure that students are able to access help when they need it. There are three staff dedicated to the pastoral care of our international students. As well as the International Dean, we also have a Dean at each year level, Form Teacher's assigned to each form class and trained counsellors available when necessary.

A comprehensive orientation program is run for all new international students. This gives them time to set up their devices, meet the international staff and become a little more familiar with the layout and routines of school. We also send out an online orientation for students to complete before they arrive.

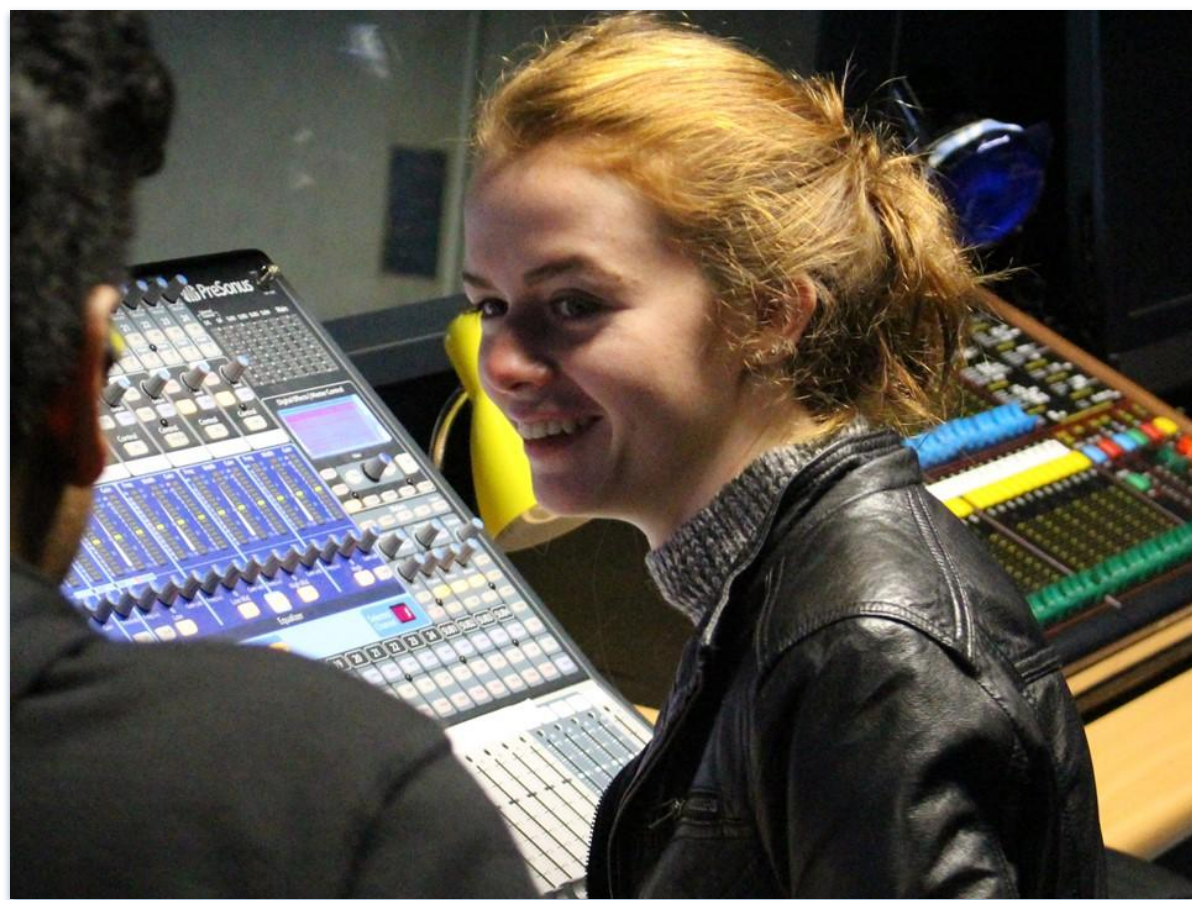
New students are also assigned a school ambassador - these students have been trained and are keen to assist our new international students integrate into school life.

The International Dean works closely with the students to ensure they are on track to meet their goals. We also liaise with the Careers Department to determine the best pathway for each student.





# LEARNING



We pride ourselves on our modern and beautiful learning environment. Teaching is relevant, visible and inquiry based. Students are taught to solve real life problems and work collaboratively. They enjoy the range of subjects on offer.

English for speakers of other languages (ESOL) support is available to those students who need it.



Our pass rates are consistently 10% higher than the national average across all year levels. Some of our international student graduates go on to study at Auckland University and Auckland University of Technology (AUT).

We encourage students to make the most of the opportunities on offer by learning something new, joining a club or travelling around the country. There is so much to do!

Scan the QR code to experience a drone flyover of our school!





# HOMESTAY

At Green Bay High School we understand the importance of a happy and successful homestay experience for students. Homestay families are chosen carefully and monitored by the school. Our families live within walking distance of school or on the school or public bus route. Many of them have been hosting for over 20 years and now have children from all over the world.

We have a dedicated Homestay Coordinator who offers support to both homestays and students. Students have their own room and will be provided with three meals a day.

Staying in a Homestay gives students an opportunity to experience a new culture while also improving their English.



“

I learned that family is not only defined by blood. I learned that language is only a small part of understanding others. I learned so much about many different people and cultures, but the most important thing I learned here was:

**He aha te mea nui o te ao?  
Māku e kī, he tāngata, he tāngata, he tāngata.**

**What is most important in the world?  
I will say, it is the people, it is the people, it is the people.**

They say that is the price you pay when travelling: you will never be completely home again because part of you is always elsewhere. They are right. But I would not do a single thing differently.

Thanks Green Bay High School for an amazing time, your support and your love.

-Ruth Ebenbichler (Austria)

”



# NEW EXPERIENCES

Supporting students to be well-rounded members of a community starts with broadening their horizons through opportunities outside the classroom.

Our performing arts faculty offers students the opportunity to take part in our yearly show, dance groups, drama competitions and various musical ensembles.

We offer a wide range of sporting opportunities which include all of the main codes as well as more niche sports - please see the following page for further information.



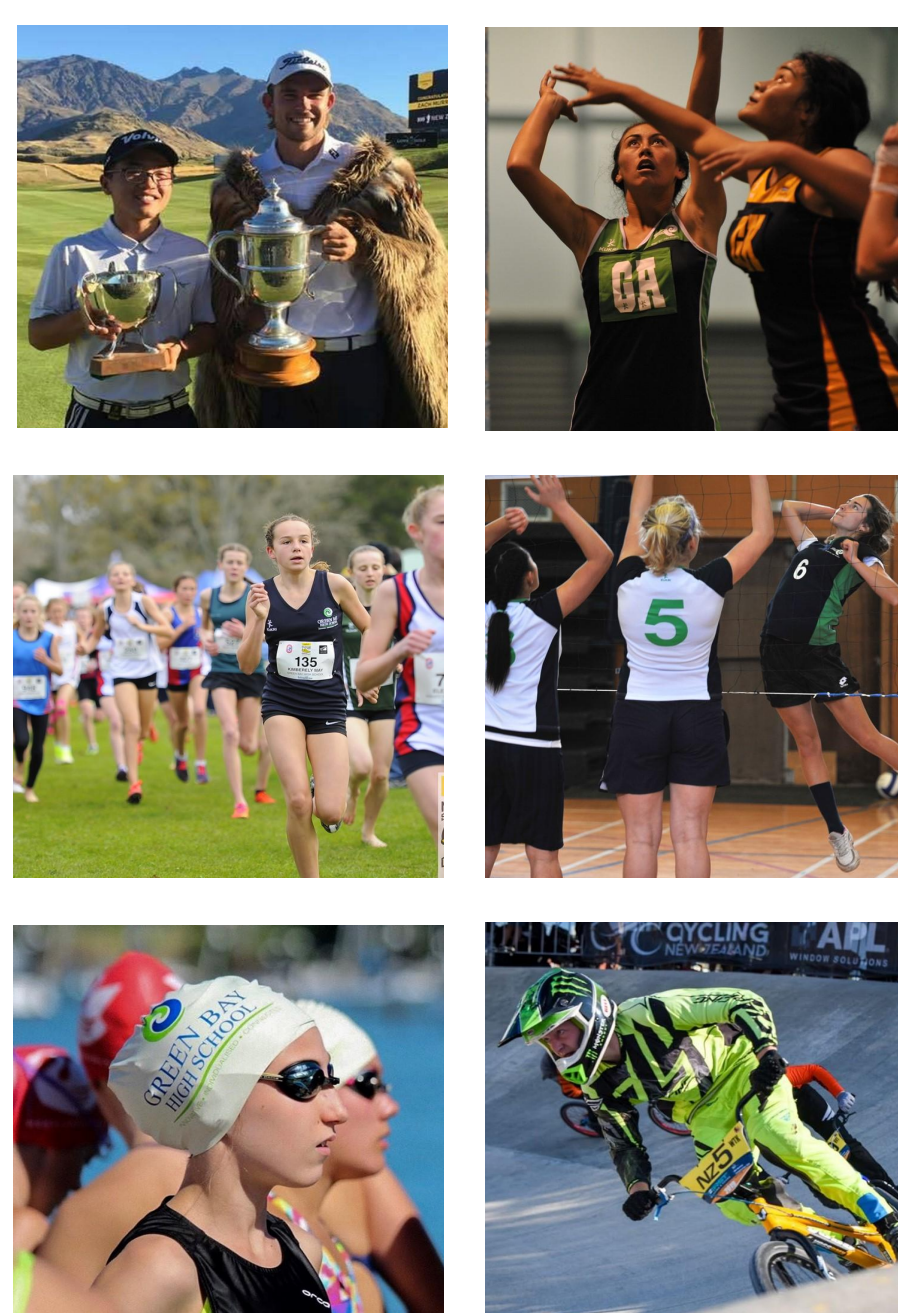


# SPORT @ GBHS

Our goal as the Green Bay High School Sports Department is to provide the opportunity for students to participate and engage in quality secondary school sport experiences. We know the importance of sport within education, and research has proven that there is a high correlation between academic achievement and participation in sport.

We offer and participate in many different codes and are supported by keen teaching staff and a large number of volunteers to provide the coaching and skills our students need to succeed. Our relationships with local sports clubs help us to cater for all sporting interests. If you would like to be involved with a sport please get in touch with us as we would love to hear from you!

All sports sign-ups are offered to the students at school before the season starts to provide time for trials and training. Students are notified of these through daily notices and social media. Sports uniforms are provided to the students on a loan basis and are to be returned at the end of their season.



## COSTS & OTHER OPPORTUNITIES

All sports teams are charged fees to help cover costs of competition entries, transport and uniform. These costs range depending on the sport. Some teams get the chance to compete at tournament weeks which incur extra costs.

We hold morning training sessions which are open to any student that wishes to improve their general fitness and sporting ability. Changing rooms and shower facilities are open for students afterwards

	WATERPOLO		ARCHERY		ATHLETICS		BADMINTON		BASKETBALL
	BMX & MOTO X		CRICKET		CROSS COUNTRY		CYCLING		DIVING
	FOOTBALL		FUTSAL		GOLF		HOCKEY		MOUNTAIN BIKING
	NETBALL		ORIENTEERING		PETANQUE		VOLLEYBALL		AFL / RUGBY RUGBY LEAGUE
	SKIING		SNOWBOARDING		SOFTBALL		SQUASH		SURFING
	SWIMMING		TENNIS		TOUCH RUGBY		TRIATHLON		ULTIMATE FRISBEE



# EXTRA-CURRICULAR @ GBHS

## OUTSIDE OF THE CLASSROOM

There are a wide range of extra curricular activities available to students at Green Bay High School. We recognise that opportunities to engage with these are important in supporting the development of a wide range of social and emotional skills for our students, as well as many of the key competencies in the New Zealand curriculum. Examples of some of the opportunities that students can access are outlined below in this brochure.



### SPECIAL INTEREST GROUPS & CLUBS

Special interest groups are a great way for our students to engage with activities that reflect their interests. They provide another space for like-minded individuals to be positively involved in the school community.

Groups and clubs that run currently are outlined below, however, if a student wishes to begin something new, then there is a process that supports them to do so.



**MURAL CLUB** - Provides a space for students to plan, design and create murals for the school.



**AV CLUB** - Students gain experience in film-making and to facilitate a space for film fanatics in the school.



**DANCE CLUB** - Students explore and perform different genres of dance possibly performing at the annual Dance Showcase.



**GAMES CLUB** - For students who enjoy a good old fashioned board game. Open to anyone to join in at break or lunch time.



**GREEN IMPACT** - Students raise awareness about environmental issues in our school, our community and globally.



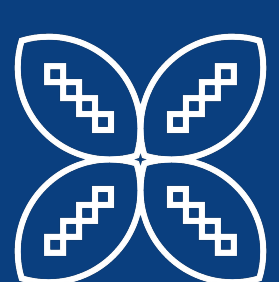
**KAPA HAKA** - Students celebrate Māori culture and identity through Kapa Haka, Te ao Māori and Te Reo Māori.



**KAPA HAUORA** - to support and promote mental and sexual health, making school a safe place



**POSITIVE BEHAVIOUR FOR LEARNING (PB4L)** - Supports positive behaviour for learning from a student perspective and promotes the school values.



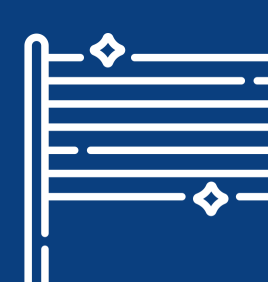
**PASIFIKA CENTRE** - This is a space for Pasifika students and anyone else who is interested, to connect with peers, learn together and explore Pasifika culture.



**PEACE GROUP** - Students support actions and campaigns that improve the lives of people around the world.



**PEER MENTORS** - Students supporting students through regular catch up to offer support and information



**SEXUALITY AND GENDER ACCEPTANCE (SAGA)** - Students can engage with peers around a wide variety of topics, ensuring the school is an inclusive place for all.



**BUDDIES WITHOUT BORDERS** - Students connect with other students across the world to highlight world issues and instigate positive change.



**MUNA** - For Y12 and 13 students to learn about and represent a particular UN country in debates on matters of world politics and social concern



**SHAKESPEARE CLUB** - Students explore and perform Shakespeare extracts working towards Secondary School Competition.



**E SPORTS CLUB** - For students who enjoy competing using video games



# GBHS INTERNATIONAL STUDENT FEES



## JANUARY 2026 - DECEMBER 2026

BASE COSTS	1 TERM (12 weeks homestay)	2 TERMS (24 weeks homestay)	3 TERMS (35 weeks homestay)	4 TERMS (45 weeks homestay)
Administration Fee *	\$1,500	\$1,500	\$2,000	\$2,000
Tuition Fee	\$4,500	\$9,000	\$13,500	\$18,000
Homestay Fees - \$410 per week **	\$4,920	\$9,840	\$14,350	\$18,450
Insurance ***	\$278	\$428	\$593	\$699
<b>TOTAL</b>	<b>\$11,198</b>	<b>\$20,768</b>	<b>\$30,443</b>	<b>\$39,149</b>

Please note the above fees include GST (Tax) and are in New Zealand Dollars. Prices shown are indicative and subject to change dependent on duration of the students time in New Zealand.

\* Administration Fee includes homestay placement fee, airport pickup & drop off, student ID card, standard subject fees and workbooks.

\*\* July - July will have additional summer holiday homestay fees

\*\*\* Subject to change. One full year is \$699

## ADDITIONAL COSTS

NCEA Fees	\$385	(Price determined by Ministry of Education)
School Uniform	\$380	approximately including PE uniform. Plain black socks
Uniform rental	\$200	available for short term students but dependent on supply
Stationery	\$100 - \$150	approximately
Pocket Money	\$50 - \$100	per week recommended
Transportation Costs per week	\$60 - \$80	approximately
Apostille & Notarised Reports	\$200	as required - usually for students from South America
Luggage Holding Fee	\$200	for December/January Christmas period
School Trips	Varies	

Please note that all students must have a laptop or chromebook (not iPad or Tablet) and a scientific calculator.

- Laptop/chromebook rental \$50 per term for emergency hire.

## TERM DATES 2026

Orientation Week (Students should arrive 1 or 2 days prior)	28 Jan - 30 Jan
Term One	02 February - 02 April
Term Two	20 April - 03 July
Term Three	20 July - 25 September
Term Four	12 October - 08 December *

\* Senior students will be free to leave once they have completed their last external assessment.

Senior students who are not participating in the External NCEA examinations will have the opportunity to take part in the Green Bay High School End of Year Program, which will run for the month of November when NCEA exams are on. There is no additional cost for this program.

[Click here](#) or scan the QR code for further information about the enrolment process





# CONTACT



*"The school's shared vision of "learning that is innovative, individualised and connected" is underpinned by the values of excellence, courage, respect and responsiveness."*

– New Zealand Education Review Office



## For further information, contact:



Carla Lambert, Director of International Education



[international@greenbayhigh.school.nz](mailto:international@greenbayhigh.school.nz)



+64 9 817 8173 ex 252



143-161 Godley Road, Green Bay, Auckland, New Zealand



[www.greenbayhigh.school.nz](http://www.greenbayhigh.school.nz)



[@gbhs\\_international](https://www.instagram.com/gbhs_international)



<https://www.facebook.com/gbhs1973/>



**Apply now:**





# INTERNATIONAL STUDENT ALUMNI



*Scan the QR codes below to watch videos about students experiences:*



**Ponita**  
*(Cambodia, 2021)*



**Sora**  
*(Japan, 2025)*



**Ruth**  
*(Austria, 2018)*

